

26 MARCH 2026

SPOTLIGHT ON THAILAND

Published Reports

- CENTRAL PATTANA (CPN TB) - Expansion on track; Maintain BUY TP THB73.00
- MEGA LIFESCIENCES (MEGA TB) - Resilient growth; Upgrade to BUY TP THB39.00

Economics

- Co-pay scheme, emergency projects to get B300bn
- SEC escalates case against Bitazza, FreedomVerse
- Fuel subsidies threaten Thai credit rating
- Protracted war could cut arrivals to Thailand by 10%

Corporate News

- CPN unveils B110bn investment strategy

Indices	Index as of 25-Mar-26	Change -1D (%)	Change YTD (%)	Net Foreign YTD (USD m)
Thailand SET	1,458	3.4	15.7	706
China SHCOMP	3,932	1.3	(0.9)	
Hong Kong HSI	25,336	1.1	(1.1)	
India SENSEX	75,273	1.6	(11.7)	(13,109)
Indonesia JCI	7,302	2.7	(15.6)	(510)
Korea KOSPI	5,642	1.6	33.9	(28,531)
MY FBMKLCI	1,717	0.5	2.2	
PH PCOMP	6,044	1.8	(0.1)	180
SG FSSTI	4,905	0.0	5.6	
Taiwan TWSE	33,439	2.5	15.5	(13,331)
VN VNINDEX	1,658	2.7	(7.1)	(1,026)
MSCI Emerging	1,473	2.0	4.9	
Nikkei 225	53,750	2.9	6.8	
FTSE 100	10,107	1.4	1.8	
CAC 40	7,847	1.3	(3.7)	
DAX	22,957	1.4	(6.3)	
Dow Jones	46,429	0.7	(3.4)	
Nasdaq	21,930	0.8	(5.6)	
S&P 500	6,592	0.5	(3.7)	
Brent	102.22	(2.2)	68.0	
Dubai	92.87	0.6	52.0	
WTI	90.32	0.5	58.1	
GOLD	4,506.00	0.0	4.4	
Trade data	Buy	Sell	Net	Share (%)
(THB m)	(THB m)	(THB m)	(THB m)	(THB m)
Foreign	41,676	36,845	4,831	53
Retail	21,022	27,924	(6,902)	33
Prop Trade	5,058	5,082	(24)	7
Local Institution	5,981	3,886	2,095	7
Total Trade	73,737	73,737	(0)	100
Rates	Last close	1M ago	End last yr	1yr ago
	25/03/2026	25/02/2026	31/12/2025	25/03/2025
THB/USD	32.65	31.08	31.51	33.94
Inflation *	(0.88)	(0.66)	(0.28)	1.08
MLR **	6.38	6.47	6.47	6.88
1Y Fixed *	0.84	0.84	0.88	1.54
Govt bond 10Y	2.21	1.91	1.64	2.09
Commodity	Last close	1M ago	End last yr	1yr ago
(USD/bbl)	25/03/2026	25/02/2026	31/12/2025	25/03/2025
Brent	102.22	70.85	60.85	73.02
Dubai	92.87	70.45	61.08	73.40
WTI	90.32	65.21	57.42	69.65
Gold	4,506	5,185	4,319	3,019
Baltic Dry	1,989	2,121	1,877	1,642
(USD/ton)	20-Mar-26	13-Feb-26	19-Dec-25	21-Mar-25
Coal	140.35	115.92	110.10	87.02
% change	29.9	21.1	27.5	61.3

* chg y-y% last at end of most recent month end; ** Avg of 4 major banks;

Sources: Bloomberg, except coal from BANPU

FSSIA Thailand Research

Jitra Amornthum License no. 014530, Head of Research | +66 2646 9966 | jitra.a@fssia.com
 Songklod Wongchai License no. 018086 | +66 2646 9970 | songklod.won@fssia.com
 Veeravat Virochpoka License no. 047077 | +66 2646 9965 | veeravat.v@fssia.com
 Usanee Liurut License no. 017928 | +66 2646 9758 | usanee.l@fssia.com
 Sureeporn Teewasuwet License no. 040694 | +66 2646 9972 | sureeporn.t@fssia.com
 Thanyatorn Songwutti License no. 101203 | +66 2646 9963 | thanyatorn.s@fssia.com
 Kampon Akaravarinchai License no. 115855 | +66 2646 9964 | kampon.a@fssia.com
 Vatcharut Vacharawongsith License no. 018301 | +66 2646 9969 | vatcharut.v@fssia.com
 Peemapon Nunthakunatip, RA

Thailand Equity Sales:

Manida Sithiseree | +66 2611 3590/91 | manida.s@fnsyrus.com
 Chaiyon Rerkkriengkrai | +66 2611 3592/93 | chaiyon.r@fnsyrus.com
 Napaporn Klongvanitchakij | +66 2611 3582/83 | napaporn.k@fnsyrus.com
 Rattana Detphattharakoson | +66 2611 3580/71 | rattana.d@fnsyrus.com
 Siriluk Kiatkosolkul | +66 2611 3584/85 | siriluk.k@fnsyrus.com

Thailand Equity Trading:

DISCLAIMER: Some directors and management of Finansia Syrus Securities Public Co., Ltd. also serve as a director and management of AEONTS, BAFS, BCPG, BE8, DV8, EA, FPT, FSX, KDH, SVI, VNG, WP, XO.

Finansia Syrus Securities Public Company Limited and FSS International Investment Advisory Securities Company Limited are subsidiaries of Finansia X Public Company Limited, with shared directors or executives.

THIS UNEDITED REPORT IS PREPARED UNDER TIME CONSTRAINT BY FSS INTERNATIONAL INVESTMENT ADVISORY SECURITIES CO., LTD. (FSSIA). ALL VIEWS EXPRESSED IN THIS REPORT ACCURATELY REFLECT THE PERSONAL VIEW OF THE ANALYST(S) WITH REGARD TO ANY AND ALL OF THE SUBJECT SECURITIES, COMPANIES OR ISSUERS MENTIONED IN THIS REPORT; AND (II) NO PART OF THE COMPENSATION OF THE ANALYST(S) WAS, IS, OR WILL BE, DIRECTLY OR INDIRECTLY, RELATED TO THE SPECIFIC RECOMMENDATIONS OR VIEWS EXPRESSED HEREIN. The information herein has been obtained from sources believed to be reliable and accurate; however FSSIA makes no representation as to the accuracy and completeness of such information. Information and opinions expressed herein are subject to change without notice. FSSIA has no intention to solicit investors to buy or sell any security in this report.

Published Reports

CENTRAL PATTANA (CPN TB) - Expansion on track; Maintain BUY TP THB73.00

Aggressive expansion plan to drive long-term growth

CPN plans to invest THB110b over 2026–30, with 55% allocated to expanding its retail portfolio, increasing net leasable area from 2.3m sqm to 2.8m sqm by 2030 (5% CAGR). The remaining budget will be deployed into residential (22%), office (4%), and hotel (2%) segments. The residential business remains in line with industry conditions, with two new projects worth THB2.9b planned in 2026, while the hotel segment will see the addition of five GO Hotels and one Oakwood property.

Strong project pipeline with large-scale developments

CPN maintains four project launches in 2026, although The Central project has been delayed to 1Q27, alongside the transformation of Central Ladprao into “The District,” a 96-rai mixed-use area with 770,000 sqm of leasable space. Key 2026 openings include Central Khon Kaen Campus, Central Northville, Central Phuket expansion, and Central Bangna. Looking ahead, Central Siam Square is scheduled for 2H27, followed by Central GR9 and the large-scale “City of Rangsit” project (750 rai) in 2028.

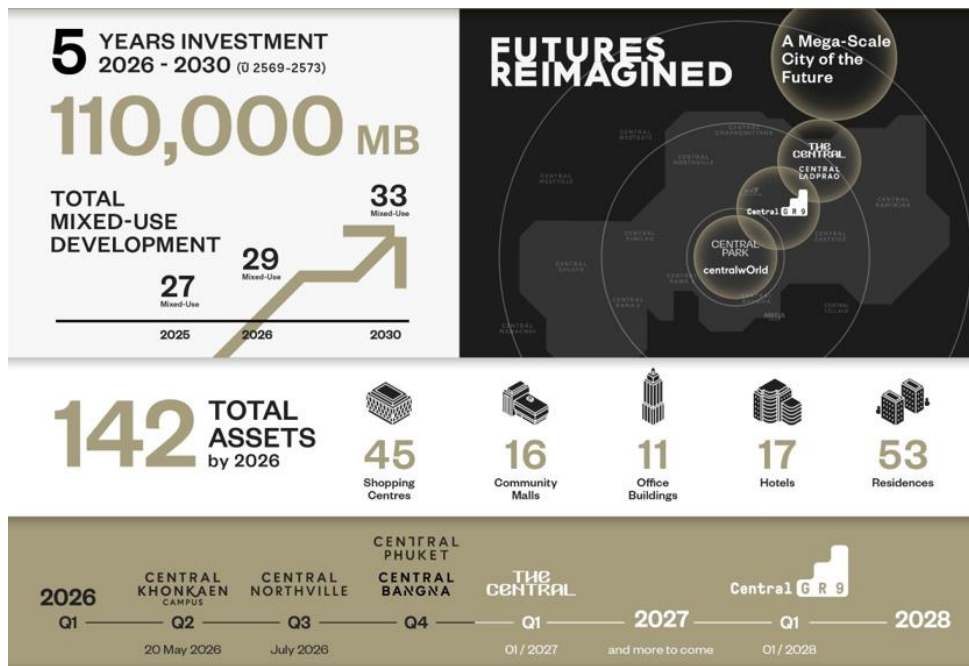
Strong balance sheet; lower funding costs ahead

CAPEX is projected at THB25b in 2026 and THB23b in 2027, increasing from THB20b in 2025. CPN’s financial position remains strong. As of end-2025, the company had interest-bearing debt of THB61.9b and cash plus financial assets of THB8.8b, implying a net IBD/E ratio of only 0.5x. In late February, TRIS upgraded the company’s corporate and senior unsecured bond ratings to AA+ from AA, with a Stable outlook. With an already low cost of funds (below 3%), the company expects a further reduction in financing costs by around 10-20 bps.

Earnings growth on track; valuation attractive

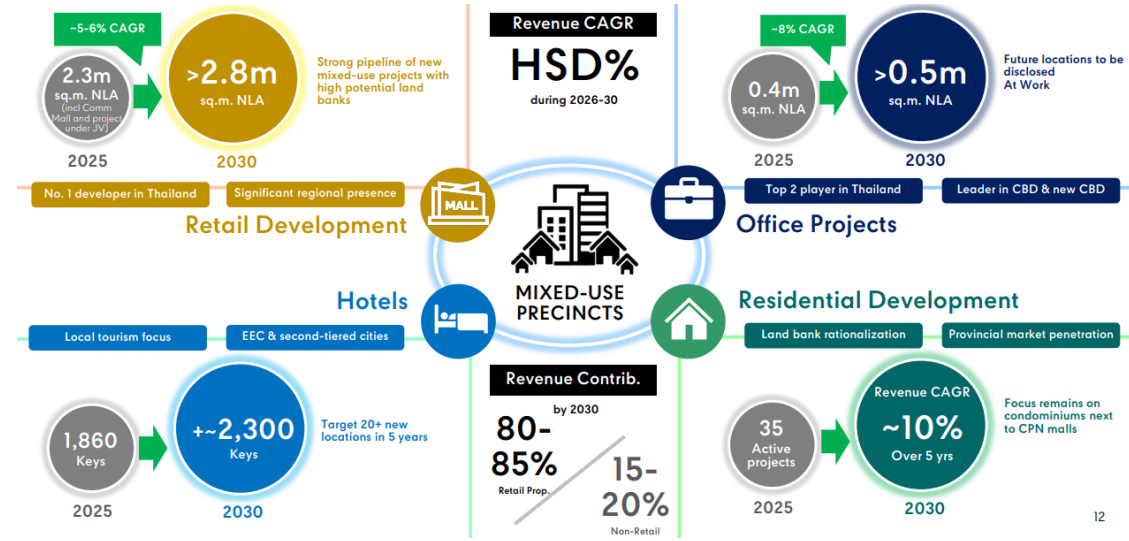
New project launches are already incorporated into our forecasts; therefore, we maintain our projections. We expect revenue to grow at a high single-digit rate over the next five years (2026–30), in line with our estimate of a 6.5% CAGR. Core profit is projected to grow at a 6.9% CAGR over 2026–28, with a strong 13.0% y-y growth expected in 2026. CPN’s share price has declined 9% MTD, broadly in line with the property sector but underperforming the SET (-5% MTD), and is currently trading at 2026E P/E of 15.2x (-1 SD). We maintain our BUY recommendation with a DCF-based target price of THB73.

Exhibit 1: Five-year projects



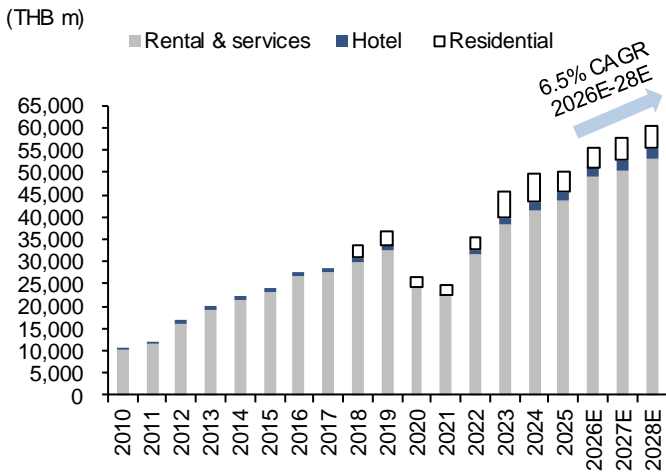
Source: CPN

Exhibit 2: Five-year financial target



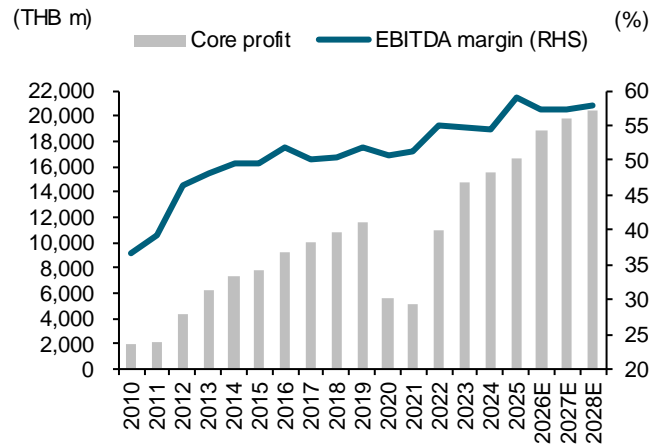
Source: CPN

Exhibit 3: Revenue structure



Sources: CPN, FSSIA estimates

Exhibit 4: EBITDA margin and core profit



Sources: CPN, FSSIA estimates

MEGA LIFESCIENCES (MEGA TB) - Resilient growth; Upgrade to BUY TP THB39.00

Limited impact; buying opportunity emerges

The impact of the Middle East conflict on MEGA is very limited, almost negligible. Meanwhile, the share price has declined by 15% MTD, underperforming the SET's -8% MTD, which reopens upside potential relative to our TP of THB39. The stock is currently trading at 2026E P/E of 11.3x (-1 SD) and 2026E EV/EBITDA of only 6.7x. Although earnings growth this year is modest, the business remains resilient, supported by essential pharmaceutical products with repeat purchases. Despite intense competition in vitamins and supplements, the Mega We Care brand remains strong in developing markets, and we view this as an attractive buying opportunity again.

Limited exposure to Middle East; revenue concentrated to SEA

In 2025, MEGA continued to be affected by the situation in Myanmar during 1H25, resulting in the Distribution business contribution declining to 36% of total revenue, with all customers located in Southeast Asia. The Mega We Care branded business (62% of total revenue), has its main customer base with 77% in Southeast Asia, 12% in Africa, and 11% in Latin America and CIS countries. As a result, Southeast Asia represents 84% of total revenue, while exposure to markets near the Middle East conflict is limited to only 12% of total revenue.

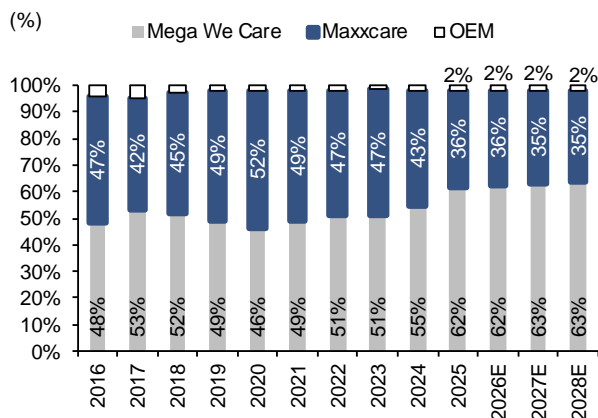
Limited cost impact; strong cost buffer in place

Logistics via air and sea freight remain manageable with no disruption risk. Freight costs are less than 5% of branded business costs, implying only a 0.6% profit impact for every 10% increase. Raw materials and packaging account for approximately 61% of the branded business's cost of goods sold, with a 10% cost increase impacting profit by up to 6%. However, no near-term impact is expected, as existing inventories and previously procured key raw materials can support production for up to six months, unless the conflict extends beyond this period.

Proven resilience; flexible pricing mitigates risk

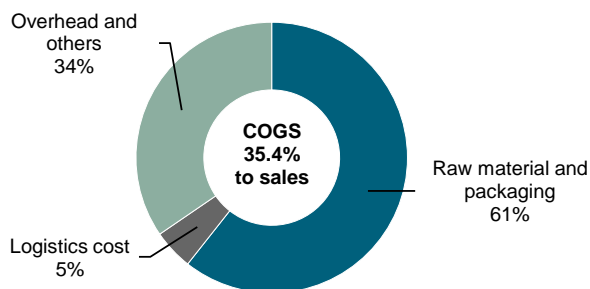
The company has options to mitigate potential impacts by either increasing product prices or maintaining prices to gain market share. Overall, we believe MEGA will not be negatively affected by the current Middle East conflict. This is also supported by its performance in 2022, when oil prices surged following the Russia–Ukraine war. Despite this, gross margin improved to 44.9% from 41.8% in 2021, while net margin increased to 14.6% from 13.4% in 2021.

Exhibit 5: Revenue structure



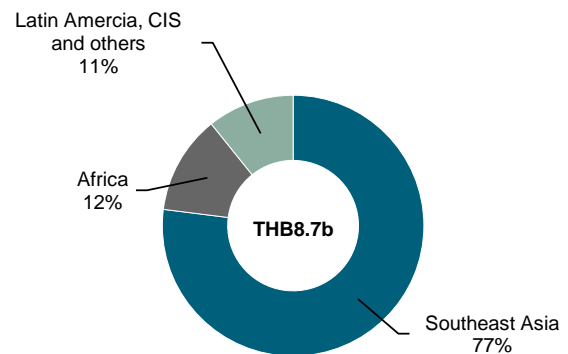
Sources: MEGA, FSSIA estimates

Exhibit 7: Branded business's cost structure, 2025



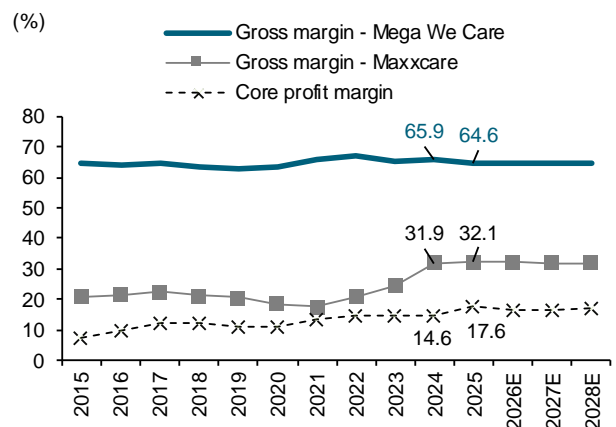
Source: MEGA

Exhibit 6: Mega We Care revenue breakdown, 2025



Source: MEGA

Exhibit 8: Gross margin and core profit margin



Sources: MEGA, FSSIA estimates

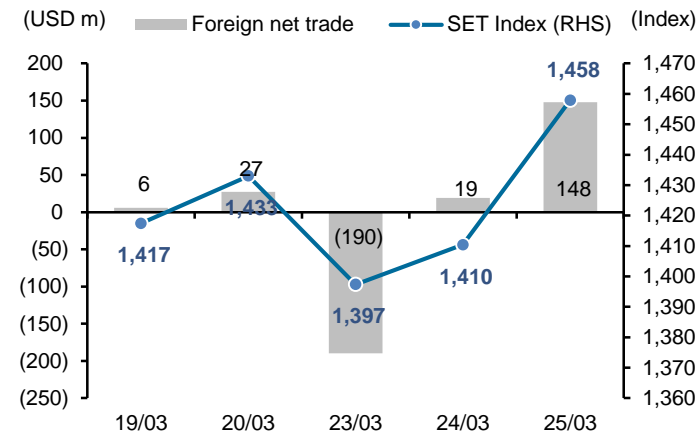
Economic news

- [Co-pay scheme, emergency projects to get B300bn](#) BANGKOK POST: Roughly 300 billion baht in investment expenditure is expected to be available for transfer to the central budget to support the "Khon La Khrueng" co-payment scheme and urgent government emergency projects. According to a Finance Ministry source who requested anonymity, caretaker finance minister Ekniti Nitithanprapas set a policy to accelerate government investment to stimulate the economy. However, if government agencies with allocated investment budgets are unable to sign contracts within the time frame set by the Budget Bureau, which is the end of March, the government will transfer the uncommitted funds to the central budget under the authority of the prime minister. The Budget Bureau would then draft a Budget Transfer Act for the government to submit to parliament for approval. For fiscal 2026, total investment expenditure amounts to 861 billion baht. As of March 24, 58% (about 508 billion baht) has already been contractually committed, leaving 41% (353 billion) uncommitted. Of this 353 billion baht, repayments to the treasury for funds the government borrowed the previous year must be deducted, amounting to about 70 billion baht, as well as some investment budgets already committed across fiscal years.
- [SEC escalates case against Bitazza, FreedomVerse](#) BANGKOK POST: The Securities and Exchange Commission (SEC) has filed a criminal complaint against Bitazza and FreedomVerse, along with three senior executives, for allegedly operating a digital asset dealer business without proper authorisation, intensifying regulatory scrutiny in the country's fast-evolving crypto sector. The complaint was submitted to the Economic Crime Suppression Division (ECD) and names Kavin Phongpandecha, former chief executive of Bitazza; current chief executive Tanawat Sutuntivorakoon; and Wee Kiat Kevin Heng, in connection with activities that may breach Thailand's Emergency Decree on Digital Asset Businesses of 2018. According to the SEC, digital asset broker Bitazza allegedly engaged in activities beyond its permitted scope. The regulator found the company offered a service known as "Crypto Dust", which involved direct transactions of digital assets with clients and the collection of fees, without routing orders through a licensed digital asset exchange. In addition, Bitazza and FreedomVerse were found to have jointly launched "Freedom Card", a product allowing users to convert cash into digital assets, which were then credited for use via the card. "These transactions were conducted outside regulated exchanges and involved direct dealing activities, effectively classifying them as digital asset dealer services under Thai law," the SEC said in a statement. Authorities highlighted that both firms promoted these services to the public via online channels, including Bitazza's Facebook platform, signalling a clear intent to offer such services broadly without obtaining the required dealer licence. The case now proceeds to the criminal justice system, beginning with an investigation by the ECD, followed by potential prosecution and court proceedings. The SEC said it plans to monitor developments and collaborate with relevant authorities to ensure enforcement. The regulator issued a warning to investors, urging caution when engaging with unlicensed digital asset service providers. Such platforms fall outside regulatory protection frameworks and may expose users to heightened risks, including fraud, scams and potential money laundering activities.
- [Fuel subsidies threaten Thai credit rating](#) BANGKOK POST: Thailand is at risk of a credit downgrade if the Middle East war drags on for three months, resulting in fuel subsidies amounting to 200 billion baht, says Tisco's Economic Strategy Unit (ESU). Methas Rattanasorn, head of economic research at Tisco ESU, said a three-month war is possible even though some recent developments have been positive. "Positive signals have only emerged from the US side, and we believe it is possible the war could last for three months," he said. "The key point is how long the Strait of Hormuz would be blocked. Even if the fighting ends, oil prices would remain high for a certain period after that." Given current prices, the Thai government pays 2.4 billion baht a day for oil subsidies, or more than 70 billion baht per month.
- [Protracted war could cut arrivals to Thailand by 10%](#) BANGKOK POST: The number of foreign visitors to tourism-reliant Thailand is at risk of falling to its lowest level in three years as the Middle East war threatens global travel, according to the Ministry of Tourism and Sports. The country could see three million fewer foreign tourist arrivals this year — nearly 10% of last year's total — if the conflict drags on for six months, according to Natthriya Thaweewong, the ministry's permanent secretary. The drop could cost the economy 150 billion baht — equivalent to 10% of the country's total foreign tourist receipts last year, she said. The government had set a 2026 target of 35 million foreign visitors. The disruption could reduce that number to around the level of 2023, when the country recorded 28 million foreign visitors. Airlines globally are grappling with a painful spike in oil prices, leading consumers to cancel travel plans or rush to lock in lower fares. "The heart of tourism is the journey, and to make that journey you need fuel," Ms Natthriya said in an interview with Bloomberg News on Tuesday. "Everyone is affected and faces the same high costs. We'll lose tourists from all over." The country's tourism industry will still be hurt by a loss of one to two million foreign visitors even if the war ceases at the end of March, said Ms Natthriya.

Corporate news

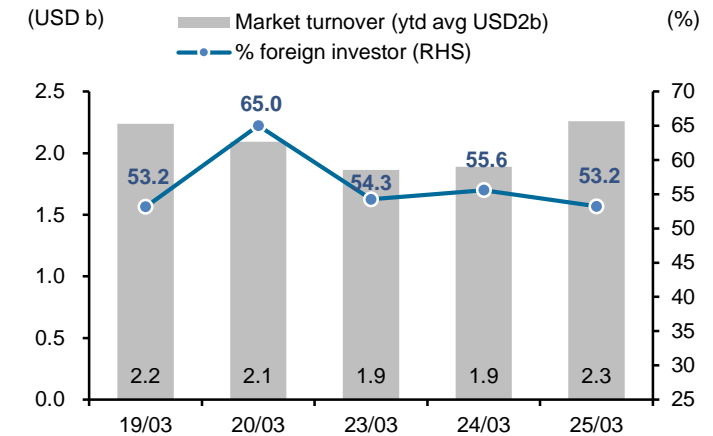
- [CPN unveils B110bn investment strategy](#) BANGKOK POST: SET-listed Central Pattana (CPN) has announced its five-year investment plan worth 110 billion baht covering 2026 to 2030. By the end of this year, CPN will operate 142 projects, including 45 shopping centres, 16 community malls, 11 office buildings, 17 hotels and 53 residential developments, according to Wallaya Chirathivat, president and chief executive of CPN. With this investment, the number of mixed-use developments will increase to 33 projects by 2030, from 27 projects in 2025, according to the company. Located in Rangsit, Pathum Thani, the "City of the Future" mega-project is the largest development project of CPN and the Central Group. Covering 750 rai of land, the project offers direct access to Phahonyothin Road, the tollway and the M6 motorway (Bang Pa-in to Korat). It will also be connected to the under-construction extension of the SRT Red Line (Rangsit–Thammasat). Ms Wallaya said the first phase is part of the company's 110-billion-baht investment plan. Chanavat Uahwatanasakul, president of retail and development at CPN, said the project is currently in the master planning and design phase, with some parts of the first phase expected to be completed within the next five years. He did not disclose details of the first phase's development. Mr Chanavat said the company will advance its "Central GR9" project. The development integrates the existing Central Rama 9 shopping centre with three office buildings: G Tower, R House (formerly Unilever House), and The Ninth Tower. In the first phase, Central Rama 9's retail spaces will be transformed and expanded, with a phased reopening beginning in early 2028. Later phases will add residential developments and other amenities. Other projects in the investment plan include The Central District, Central Bangna, Central Phuket, Central Northville and Central Khon Kaen Campus. The Central District integrates the existing Central Ladprao, which will be transformed alongside The Central Phahonyothin to create a unified ecosystem in the Ladprao–Phahonyothin area. Central Northville in Nonthaburi, redeveloped on the site of Central Rattanathibet, is set to open its retail component in July 2026. Central Khon Kaen Campus integrates a shopping centre, a 33-storey Phyll condominium, and the first GO! Hotel in Northeastern Thailand, which is scheduled to open on May 20 this year. The New Central Bangna will expand residential offerings adjacent to the shopping centre, with the transformation scheduled for completion in the last quarter. For Central Chiangmai Airport, CPN is eyeing residential and office space in the project. Naparat Sriwanvit, chief finance officer and president of CPN's hotel and office businesses, said the company aims to operate 17 properties nationwide by the end of 2026, up from 11 at present. The new hotels include Oakwood Central Hat Yai and five new GO! Hotels, which are set to open this year in Khon Kaen, Nakhon Sawan, Chiang Rai, Chiang Mai and Ayutthaya. Local media has reported that the Embassy of the Netherlands in Bangkok will relocate from Wireless Road to Central Park Office in August, and that its 20-rai land plot will be put up for sale. Regarding whether the company is interested in bidding for the land, Ms Wallaya responded: "We are not focusing on that."

Exhibit 9: Foreign fund flow and SET Index



Source: Bloomberg

Exhibit 10: Foreign participation



Source: Bloomberg

Exhibit 11: Index performance

	SET Index		Index performance (% change)									
	Index	(%chg)	Energy	Bank	Comu	Commerce	Food	Property	Construct	Transport	Petrochem	
% of SET Index			19%	13%	10%	6%	4%	4%	2%	7%	2%	
Current	1,457.91	3.4	1.3	0.9	1.4	2.8	2.8	2.3	4.0	3.7	(0.9)	
-5D	1,440.85	1.2	1.7	1.0	(1.0)	(1.7)	(0.7)	(1.1)	2.9	1.8	(0.4)	
-1M	1,533.64	(4.9)	(5.2)	(2.5)	(7.4)	(12.5)	(7.4)	(8.9)	(12.7)	(8.1)	5.6	
-3M	1,259.25	15.8	17.3	6.7	16.9	0.1	(2.0)	7.7	1.7	(6.2)	38.6	
-6M	1,278.74	14.0	12.1	19.0	23.7	(15.0)	(9.7)	1.4	(11.9)	(4.1)	8.4	
-1Y	1,190.36	22.5	14.7	19.5	25.7	(20.6)	(10.3)	0.3	8.6	(3.5)	28.5	
WTD	1,432.99	1.7	0.1	0.9	(1.5)	(0.1)	0.5	0.3	2.7	2.6	(2.5)	
MTD	1,528.26	(4.6)	(5.4)	(2.8)	(4.0)	(11.2)	(6.1)	(9.2)	(12.6)	(7.9)	3.9	
QTD	1,259.67	15.7	16.7	6.0	17.2	1.1	(1.3)	8.2	2.8	(3.4)	38.4	
End of last year	1,259.67	15.7	16.7	6.0	17.2	1.1	(1.3)	8.2	2.8	(3.4)	38.4	

Source: Bloomberg

Exhibit 12: Trade by investor types

	SET Index		Exchange rate (USD:THB)	SET Index		Equity trading / Net position				Bond Net foreign (USD m)
	Index	Change (y-y%)		Average daily turnover (THB m)	Average daily turnover (USD m)	Foreign (USD m)	Retail (USD m)	PropTrade (USD m)	Local Inst (USD m)	
2020	1,449.35	(8.3)	31.29	67,335	2,152	(8,287)	6,873	459	953	(1,005)
2021	1,657.62	14.4	32.00	88,443	2,764	(1,632)	3,630	435	(2,330)	6,550
2022	1,668.66	15.1	34.78	53,589	1,541	5,362	(656)	56	(4,758)	4,111
2023	1,415.85	(15.2)	34.81	51,072	1,467	(5,507)	3,348	(146)	2,305	318
2024	1,400.21	(1.1)	35.26	45,039	1,277	(4,132)	2,680	7	1,443	(615)
2025	1,259.67	(10.0)	32.88	40,477	1,231	(3,210)	4,783	(411)	(1,158)	2,340
2026YTD	1,457.91	15.7	32.88	64,745	1,969	706	611	36	(1,356)	993
1Q25	1,158.09	(16.0)	33.95	42,528	1,253	(1,172)	1,625	(297)	(157)	405
2Q25	1,089.56	(16.2)	33.09	40,328	1,219	(1,165)	1,603	(77)	(358)	1,051
3Q25	1,274.17	(12.1)	32.30	44,797	1,387	(544)	351	(161)	354	14
4Q25	1,259.67	(10.0)	32.16	34,634	1,077	(331)	1,204	123	(997)	876
1Q26	1,457.91	25.9	31.57	65,376	2,071	706	611	36	(1,356)	993
Jul-25	1,242.35	(5.9)	32.44	42,053	1,296	499	(615)	(35)	151	(60)
Aug-25	1,236.61	(9.0)	32.46	49,877	1,537	(670)	564	(15)	120	(145)
Sep-25	1,274.17	(12.1)	32.00	42,462	1,327	(373)	402	(111)	83	219
Oct-25	1,309.50	(10.7)	32.56	38,900	1,195	(136)	414	126	(404)	618
Nov-25	1,256.69	(12.0)	32.39	33,847	1,045	(386)	646	23	(283)	513
Dec-25	1,259.67	(10.0)	31.54	31,156	988	191	144	(25)	(310)	(255)
Jan-26	1,325.62	0.8	31.28	46,231	1,478	141	511	296	(947)	1,429
Feb-26	1,528.26	27.0	31.24	72,529	2,321	1,743	(1,484)	237	(496)	352
Mar-26	1,457.91	25.9	32.18	77,367	2,404	(1,178)	1,585	(497)	87	(788)
2026YTD	1,457.91	15.7	32.88	64,745	1,969	706	611	36	(1,356)	993
19/3/2026	1,417.45		32.79	73,427	2,240	6	103	(28)	(81)	(131)
20/3/2026	1,432.99		32.78	68,604	2,093	27	(38)	9	2	(44)
23/3/2026	1,397.34		33.00	61,490	1,863	(190)	272	2	(84)	(58)
24/3/2026	1,410.39		32.56	61,546	1,891	19	(56)	20	18	
25/3/2026	1,457.91		32.65	73,737	2,258	148	(211)	(1)	64	505

Source: Bloomberg

Exhibit 13: Upcoming events

Date Time	Event	Period	Survey	Actual	Prior
3/27/2026 0:00	Mfg Production Index ISIC NSA YoY	Feb	2.45%	--	1.46%
3/27/2026 0:00	Capacity Utilization ISIC	Feb	--	--	60.07
3/27/2026 3:30	Gross International Reserves	20-Mar	--	--	\$284.4b
3/27/2026 3:30	Forward Contracts	20-Mar	--	--	\$22.3b
3/31/2026 3:00	BoP Current Account Balance	Feb	--	--	\$700m
3/31/2026 3:30	Exports YoY	Feb	--	--	23.60%
3/31/2026 3:30	Exports	Feb	--	--	\$31050m
3/31/2026 3:30	Imports YoY	Feb	--	--	30.10%
3/31/2026 3:30	Imports	Feb	--	--	\$31791m
3/31/2026 3:30	Trade Balance	Feb	--	--	-\$741m
3/31/2026 3:30	BoP Overall Balance	Feb	--	--	\$2193m
3/31/2026 20:30	S&P Global Thailand PMI Mfg	Mar	--	--	53.5
4/01/2026 3:30	Business Sentiment Index	Mar	--	--	49.6
4/06/2026 23:30	CPI YoY	Mar	--	--	-0.88%
4/06/2026 23:30	CPI NSA MoM	Mar	--	--	-0.24%
4/06/2026 23:30	CPI Core YoY	Mar	--	--	0.56%
4/06/2026-4/16/2026	Consumer Confidence	Mar	--	--	53.7
4/06/2026-4/16/2026	Consumer Confidence Economic	Mar	--	--	47.3
4/20/2026-4/25/2026	Car Sales	Mar	--	--	48242
4/20/2026-4/26/2026	Customs Exports YoY	Mar	--	--	9.90%
4/20/2026-4/26/2026	Customs Imports YoY	Mar	--	--	31.80%
4/20/2026-4/26/2026	Customs Trade Balance	Mar	--	--	-\$2834m

Source: Bloomberg

Exhibit 14: Upcoming XR

Symbol	X-Date	Announce Date	Rights for	Subscription Price	Unit	Subscription Ratio (Holding:New)	Subscription Period	Allotted Shares (Shares)
VS	31/3/2026	16/3/2026	Common	0.3	Baht	1 : 1	25/05/2026 - 29/05/2026	250000000
HEALTH	8/4/2026	23/12/2025	Warrants	-	Baht	4 : 1	-	147487144
NKI	29/4/2026	26/2/2026	Common	15	Baht	3.16667 : 1	20/05/2026 - 26/05/2026	120000000
PANEL	29/4/2026	24/2/2026	Warrants	-	Baht	4 : 1	-	475000000
PANEL	29/4/2026	24/2/2026	Warrants	-	Baht	8 : 1	-	237500000
IVF	7/5/2026	27/2/2026	Warrants	-	Baht	3.2 : 1	-	137500000
CIG	8/5/2026	2/3/2026	Common	0.03	Baht	1 : 2	26/05/2026 - 02/06/2026	7473155398
BC	19/6/2026	27/2/2026	Warrants	-	Baht	10 : 1	-	60537945

Source: SET

Exhibit 15: Management trading

Company	Management	Securities	Transaction	Shares	Price (THB)	Action	Value (THBm)
King Gen (KGEN)	Atthayut Vutthithummee	Common Shares	3/20/2026	60,000	1.20	Sell	0.07
KCG Corporation (KCG)	Songtham Phianpattanawit	Common Shares	3/24/2026	5,000	9.15	Buy	0.05
KCG Corporation (KCG)	Songtham Phianpattanawit	Common Shares	3/24/2026	11,000	9.19	Buy	0.10
J.R.W. Utility (JR)	Teeranont Wiwatjesadawut	Common Shares	3/24/2026	8,200	1.72	Buy	0.01
J.R.W. Utility (JR)	Teeranont Wiwatjesadawut	Common Shares	3/24/2026	200	1.71	Buy	0.00
Triple I Logistics (III)	Krirk-Krai Jirapaet	Common Shares	3/19/2026	50,000	3.94	Buy	0.20
Triple I Logistics (III)	Krirk-Krai Jirapaet	Common Shares	3/20/2026	91,200	3.93	Buy	0.36
Triple I Logistics (III)	Krirk-Krai Jirapaet	Common Shares	3/23/2026	222,100	3.82	Buy	0.85
Triple I Logistics (III)	Krirk-Krai Jirapaet	Common Shares	3/24/2026	16,700	3.76	Buy	0.06
Don Muang Tollway (DMT)	Sombat Panichewa	Common Shares	3/20/2026	21,142,392	11.50	Sell	243.14
Thai Union Group (TU)	Mr Tin Shu Chan	Common Shares	3/24/2026	1,170,700	-	Receive	n/a
Bangkok Lab and Cosmetic (BLC)	Somchai Phisphahutharn	Common Shares	3/24/2026	150,000	3.87	Sell	0.58
Petchsriwichai Enterprise (PCE)	Prakit Prasitsupaphol	Common Shares	3/24/2026	600,000	2.62	Buy	1.57
Power Line Engineering (PLE)	Panich Vikitsreth	Common Shares	3/23/2026	800,000	0.18	Sell	0.14
Power Line Engineering (PLE)	Panich Vikitsreth	Common Shares	3/24/2026	950,000	0.18	Sell	0.17
Food Moments (FM)	Sumate Masileerungsri	Common Shares	3/23/2026	4,000	3.94	Buy	0.02
Firetrade Engineering (FTE)	Taksin Tantipijit	Common Shares	3/24/2026	50,000	1.98	Buy	0.10
Mitsib Leasing (MITSIB)	Nitipat Yongsanguanchai	Common Shares	3/24/2026	175,400	0.56	Sell	0.10
MR. D.I.Y. Holding (Thailand) (MRDIYT)	Kopma Asawakidakarn	Common Shares	3/24/2026	4,000	8.10	Buy	0.03
Nonthavej Hospital (NTV)	Piyasil Chanpoo	Common Shares	3/24/2026	200	21.90	Buy	0.00
Nonthavej Hospital (NTV)	Piyasil Chanpoo	Common Shares	3/24/2026	200	22.00	Buy	0.00
Intermedical Care and Lab Hospital (IMH)	Poramaporn Pavarojkit	Common Shares	3/25/2026	73,400	3.01	Buy	0.22
Intermedical Care and Lab Hospital (IMH)	Sittiwat Kamkatwong	Common Shares	3/24/2026	5,400	3.02	Buy	0.02
World Flex (WFX)	Chawalit Tiyadechachai	Common Shares	3/24/2026	100,000	1.13	Buy	0.11
Wice Logistics (WICE)	Patadon Kongsoonthorn	Common Shares	3/24/2026	40,000	2.22	Buy	0.09
Sikarin (SKR)	Suriyan Kojonroj	Common Shares	3/20/2026	120,000	6.80	Buy	0.82
Saha Pathanapibul (SPC)	Boonchai Chokwatana	Common Shares	3/20/2026	4,000	55.75	Buy	0.22
Saha Pathana Inter-Holding (SPI)	Samrerng Manoonpol	Common Shares	3/24/2026	200	43.25	Buy	0.01
R&B Food Supply (RBF)	Petchara Ratanapoompinyo	Common Shares	3/20/2026	667,200	3.57	Buy	2.38
R&B Food Supply (RBF)	Petchara Ratanapoompinyo	Common Shares	3/24/2026	260,000	3.58	Buy	0.93
Interroyal Engineering (IROYAL)	Panapat Mekasuwandumrong	Common Shares	3/24/2026	15,800	5.95	Buy	0.09
Interroyal Engineering (IROYAL)	Panapat Mekasuwandumrong	Warrant	3/24/2026	4,200	1.55	Buy	0.01
Infrasnet (INSET)	Weerakorn Ongsakul	Common Shares	3/24/2026	1,000	2.48	Buy	0.00
Asian Phytoceuticals (APCO)	Arunee Wiriyachitra	Common Shares	3/23/2026	5,600	2.76	Buy	0.02
Asian Phytoceuticals (APCO)	Arunee Wiriyachitra	Common Shares	3/24/2026	300,000	2.76	Sell	0.83
Asian Phytoceuticals (APCO)	Pichaet Wiriyachitra	Common Shares	3/23/2026	5,600	2.76	Buy	0.02
Asian Phytoceuticals (APCO)	Pichaet Wiriyachitra	Common Shares	3/24/2026	300,000	2.76	Sell	0.83
MMM Capital (MMM)	Suriya Wongsitthichaikul	Common Shares	3/24/2026	80,000	2.81	Buy	0.22
SAAM Development (SAAM)	Podduang Kongkamee	Common Shares	3/23/2026	400*	488.00	Sell	0.05
SAAM Development (SAAM)	Podduang Kongkamee	Common Shares	3/23/2026	100	4.88	Sell	0.00
Asset World Corp (AWC)	Mr. Boon Chin Heng	Common Shares	3/23/2026	200,000	1.96	Buy	0.39
i-Tail Corporation (ICT)	Mr Tin Shu Chan	Common Shares	3/24/2026	100,361	-	Receive	n/a

Source: *Revoked by Reporter; SEC

Exhibit 16: Upcoming XM [1/2]

Symbol	X-Date	Meeting Date	Agenda
ACE	26/3/2026	30/4/2026	Cash dividend payment,Changing The director(s)
AKS	26/3/2026	30/4/2026	Omitted dividend payment,Capital increase,Change of par value,Changing The director(s),To consider and approve the amendment of Article of the Company's Memorandum of Association to reflect the capital reduction
AXTRART	26/3/2026	-	Fund management,Financial position and performance,Appointment of auditors and audit costs,Distribution payment of the year 2025
B52	26/3/2026	28/4/2026	Omitted dividend payment,Changing The director(s)
CGH	26/3/2026	29/4/2026	Omitted dividend payment,Changing The director(s),To consider and approve the amendment of company's objectives
DUSIT	26/3/2026	27/4/2026	Omitted dividend payment,Changing The director(s),To consider and approve the amendment of company's article of association
FANCY	26/3/2026	28/4/2026	Omitted dividend payment,Changing The director(s)
GJS	26/3/2026	28/4/2026	Omitted dividend payment,Connected transaction,Changing The director(s)
GSTEEL	26/3/2026	28/4/2026	Omitted dividend payment,Connected transaction,Changing The director(s)
INETREIT	26/3/2026	10/4/2026	Fund management,Financial position and performance,Appointment of auditors and audit costs
KC	26/3/2026	22/4/2026	Omitted dividend payment,Changing The director(s)
KGEN	26/3/2026	24/4/2026	Omitted dividend payment,Capital increase,Changing The director(s)
LEE	26/3/2026	28/4/2026	Cash dividend payment,Changing The director(s)
LTS	26/3/2026	30/4/2026	Omitted dividend payment,Changing The director(s),To consider and approve the amendment of company's objectives
MATI	26/3/2026	28/4/2026	Cash dividend payment,Changing The director(s)
NOVA	26/3/2026	24/4/2026	Omitted dividend payment,Changing The director(s)
PRIME	26/3/2026	29/4/2026	Omitted dividend payment,Capital increase,Changing The director(s)
SAUCE	26/3/2026	23/4/2026	Cash dividend payment,Changing The director(s)
SNPS	26/3/2026	27/4/2026	Cash dividend payment,Connected transaction,Changing The director(s)
STPI	26/3/2026	29/4/2026	Omitted dividend payment,Changing The director(s)
SUPER	26/3/2026	27/4/2026	Omitted dividend payment,Changing The director(s)
TNDT	26/3/2026	29/4/2026	Omitted dividend payment,Capital increase,The issuance of convertible securities,Changing The director(s),To consider and approve the amendment of Article of the Company's Memorandum of Association to reflect the capital reduction
TRV	26/3/2026	24/4/2026	Omitted dividend payment,Changing The director(s)
WELL	26/3/2026	30/4/2026	Omitted dividend payment,Changing The director(s),To consider and approve the amendment of company's objectives
EGATIF	27/3/2026	-	Fund management,Financial position and performance,Appointment of auditors and audit costs
IVF	27/3/2026	23/4/2026	Omitted dividend payment,Capital increase,The issuance of convertible securities,Changing The director(s)
KBSPIF	27/3/2026	-	Fund management,Financial position and performance,Appointment of auditors and audit costs
NEX	27/3/2026	23/4/2026	Omitted dividend payment,Capital increase,Connected transaction,Changing The director(s),To consider and approve the amendment of Article of the Company's Memorandum of Association to reflect the capital reduction
NRF	27/3/2026	28/4/2026	Omitted dividend payment,Capital increase,Changing The director(s),To consider and approve the amendment of Article of the Company's Memorandum of Association to reflect the capital reduction
PB	27/3/2026	30/4/2026	Cash dividend payment,Changing The director(s)
RML	27/3/2026	22/4/2026	Omitted dividend payment,Changing The director(s)
SKIN	27/3/2026	28/4/2026	Omitted dividend payment,Changing The director(s)
THMUI	27/3/2026	28/4/2026	Omitted dividend payment,Changing The director(s)
TRC	27/3/2026	30/4/2026	Omitted dividend payment,Changing The director(s)
TTLPF	27/3/2026	-	Fund management,Financial position and performance,Appointment of auditors and audit costs
YGG	27/3/2026	30/4/2026	Omitted dividend payment,Changing The director(s)
BR	30/3/2026	17/4/2026	Cash dividend payment,Changing The director(s)
CHOW	30/3/2026	30/4/2026	Omitted dividend payment,Changing The director(s)
CIG	30/3/2026	30/4/2026	Omitted dividend payment,Capital increase,Changing The director(s),To consider and approve the amendment of Article of the Company's Memorandum of Association to reflect the capital reduction
CREDIT	30/3/2026	24/4/2026	Cash dividend payment,Changing The director(s)
DPAIN	30/3/2026	28/4/2026	Omitted dividend payment,Changing The director(s)
FVC	30/3/2026	30/4/2026	Omitted dividend payment,Acquisition and disposition of assets / Acquisition or Disposition of Assets ,Changing The director(s)
JAK	30/3/2026	23/4/2026	Cash dividend payment,Changing The director(s)
MK	30/3/2026	29/4/2026	Omitted dividend payment,Changing The director(s)
QHOP	30/3/2026	-	1/12/2025
TRUE	30/3/2026	30/4/2026	Cash dividend payment,Changing The director(s)
TU-PF	30/3/2026	-	1/12/2025
UP	30/3/2026	22/4/2026	Cash dividend payment,Changing The director(s)
UPF	30/3/2026	22/4/2026	Omitted dividend payment,Changing The director(s)
ZAA	30/3/2026	28/4/2026	Omitted dividend payment,Changing The director(s)
BYD	31/3/2026	29/4/2026	Omitted dividend payment,Changing The director(s)

Source: SET

Exhibit 17: Upcoming XM [2/2]

Symbol	X-Date	Meeting Date	Agenda
EMC	31/3/2026	29/4/2026	Omitted dividend payment,Capital increase,The issuance of debentures,Changing The director(s),To consider and approve the amendment of Article of the Company's Memorandum of Association to reflect the capital reduction
ITD	31/3/2026	22/4/2026	Omitted dividend payment,Changing The director(s)
JCK	31/3/2026	29/4/2026	Omitted dividend payment,Capital increase,Changing The director(s),To consider and approve the amendment of Article of the Company's Memorandum of Association to reflect the capital reduction
QDC	31/3/2026	30/4/2026	Omitted dividend payment,Capital increase,Changing The director(s),To consider and approve the amendment of Article of the Company's Memorandum of Association to reflect the capital reduction
SAWANG	31/3/2026	30/4/2026	Omitted dividend payment,Changing The director(s)
SPTX	31/3/2026	27/4/2026	Omitted dividend payment,Changing The director(s)
SQ	31/3/2026	22/4/2026	Omitted dividend payment,Changing The director(s)
STOWER	31/3/2026	29/4/2026	Omitted dividend payment,Changing The director(s)
SUC	31/3/2026	23/4/2026	Cash dividend payment,Changing The director(s)
TCC	31/3/2026	30/4/2026	Omitted dividend payment,Changing The director(s)
TFMAMA	31/3/2026	29/4/2026	Cash dividend payment,Changing The director(s)
TNPF	31/3/2026	-	Fund management,Financial position and performance,Appointment of auditors and audit costs
VS	31/3/2026	27/4/2026	Omitted dividend payment,Capital increase,Changing The director(s),Acknowledge the Company's business plan for the year 2026
WAVE	31/3/2026	29/4/2026	Omitted dividend payment,Changing The director(s)
YONG	31/3/2026	22/5/2026	Connected transaction
CEN	1/4/2026	30/4/2026	Omitted dividend payment,Capital increase,Changing The director(s),To consider other matters (if any).
CRANE	1/4/2026	23/4/2026	Omitted dividend payment,Changing The director(s)
PPPM	1/4/2026	29/4/2026	Omitted dividend payment,Capital increase,The issuance of convertible securities,Changing The director(s)
RWI	1/4/2026	30/4/2026	Omitted dividend payment,Capital increase,Changing The director(s),To consider and approve the amendment of company's objectives
SYNTEC	1/4/2026	30/4/2026	Cash dividend payment,Changing The director(s)
THRE	1/4/2026	28/4/2026	Omitted dividend payment,Changing The director(s),To approve the shareholding and management restructuring plan of the Company and other related matters.
XBIO	1/4/2026	30/4/2026	Omitted dividend payment,Capital increase,Changing The director(s),To consider and approve the amendment of Article of the Company's Memorandum of Association to reflect the capital reduction
CSR	2/4/2026	30/4/2026	Cash dividend payment,Changing The director(s)
SOLAR	2/4/2026	30/4/2026	Omitted dividend payment,Capital increase,Changing The director(s),To consider and approve the amendment of Article of the Company's Memorandum of Association to reflect the capital reduction
TNPC	2/4/2026	24/4/2026	Omitted dividend payment,Changing The director(s)
AHC	7/4/2026	7/5/2026	Changing The director(s)
HEALTH	8/4/2026	30/4/2026	Omitted dividend payment,Changing The director(s)
HYDRO	8/4/2026	29/4/2026	Omitted dividend payment,Change of par value
KPNREIT	8/4/2026	29/4/2026	Fund management,Financial position and performance,Appointment of auditors and audit costs
TCOAT	8/4/2026	30/4/2026	Cash dividend payment,Changing The director(s)
TPL	9/4/2026	27/4/2026	Omitted dividend payment,Changing The director(s),To consider and approve the amalgamation
EMPIRE	21/4/2026	29/5/2026	Acquisition and disposition of assets / Acquisition or Disposition of Assets
SPTX	21/4/2026	29/5/2026	Acquisition and disposition of assets / Acquisition or Disposition of Assets , Increasing the company's registered capital and amending Article 4 of the Memorandum of Association. - Allocating additional shares for private placement

Source: SET

Exhibit 18: New securities

Derivative Warrants	Trade Date	Underlying	Issuer	DW Type	Market	Maturity Date	Exercise Price (Baht)
BA41C2608A	26/03/2026	BA	JPM	Call	SET	12/08/2026	18
BLA13C2608A	26/03/2026	BLA	KGI	Call	SET	12/08/2026	27
ERW19C2609A	26/03/2026	ERW	YUANTA	Call	SET	10/09/2026	3.4
GLOBAL13C2608B	26/03/2026	GLOBAL	KGI	Call	SET	12/08/2026	8
KCE41C2608A	26/03/2026	KCE	JPM	Call	SET	12/08/2026	32.124
MTC41C2608A	26/03/2026	MTC	JPM	Call	SET	12/08/2026	38
SET5041C2606K	26/03/2026	SET50	JPM	Call	SET	03/07/2026	1,130.00
TIDLOR41C2608A	26/03/2026	TIDLOR	JPM	Call	SET	12/08/2026	21
TU41C2608A	26/03/2026	TU	JPM	Call	SET	12/08/2026	14.6

Source: SET

Exhibit 19: Upcoming XD [1/8]

Symbol	X-Date	Dividend (per Share)	Unit	Operation Period	Source of Dividend	Payment Date	Price	Div Yield	Par
ACE	26/03/2026	0.01	Baht	01/01/2025 - 31/12/2025	NP	28/05/2026	1.29	0.8%	0.5
INETREIT	26/03/2026	0.0675	Baht	01/01/2026 - 31/01/2026	Both	10/04/2026	12.20	0.6%	10
LEE	26/03/2026	0.2	Baht	01/01/2025 - 31/12/2025	Both	19/05/2026	2.74	7.3%	1
Q-CON	26/03/2026	0.4	Baht	01/01/2025 - 31/12/2025	NP	17/04/2026	7.35	5.4%	1
NOVOB80	27/03/2026	0.03962	Baht	-	-	29/04/2026	1.22	3.2%	-
SCGD	27/03/2026	0.19	Baht	01/01/2025 - 31/12/2025	NP	20/04/2026	5.05	3.8%	10
ADVANT23	30/03/2026	0.00405	Baht	-	-	29/06/2026	3.30	0.1%	-
FANUC23	30/03/2026	0.01877	Baht	-	-	21/07/2026	2.28	0.8%	-
HONDA19	30/03/2026	0.0629	Baht	-	-	30/06/2026	2.70	2.3%	-
ITOCU19	30/03/2026	0.0599	Baht	-	-	30/06/2026	7.05	0.8%	-
JAK	30/03/2026	0.055	Baht	01/01/2025 - 31/12/2025	NP	14/05/2026	0.80	6.9%	1
MICRON01	30/03/2026	0.0024	Baht	-	-	13/05/2026	7.85	0.0%	-
MICRON03	30/03/2026	0.00129	Baht	-	-	13/05/2026	4.14	0.0%	-
MICRON19	30/03/2026	0.002	Baht	-	-	08/05/2026	8.35	0.0%	-
MICRON80	30/03/2026	0.00482	Baht	-	-	12/05/2026	12.50	0.0%	-
MITSU19	30/03/2026	0.0215	Baht	-	-	30/06/2026	9.40	0.2%	-
MUFG19	30/03/2026	0.0629	Baht	-	-	30/06/2026	5.60	1.1%	-
MUFG23	30/03/2026	0.03216	Baht	-	-	21/07/2026	2.20	1.5%	-
NINTENDO19	30/03/2026	0.1159	Baht	-	-	30/06/2026	18.40	0.6%	-
NINTENDO23	30/03/2026	0.02536	Baht	-	-	21/07/2026	1.65	1.5%	-
SANRIO23	30/03/2026	0.01061	Baht	-	-	01/07/2026	1.61	0.7%	-
SANRIO80	30/03/2026	0.07004	Baht	-	-	03/07/2026	11.00	0.6%	-
SMFG19	30/03/2026	0.1222	Baht	-	-	30/06/2026	10.90	1.1%	-
SOFTBANK23	30/03/2026	0.0086	Baht	-	-	21/07/2026	1.49	0.6%	-
SONY80	30/03/2026	0.01251	Baht	-	-	01/07/2026	3.38	0.4%	-
TEL23	30/03/2026	0.01826	Baht	-	-	22/06/2026	3.14	0.6%	-
TEL80	30/03/2026	0.06744	Baht	-	-	24/06/2026	8.45	0.8%	-
TOYOTA80	30/03/2026	0.11138	Baht	-	-	18/06/2026	6.90	1.6%	-
UP	30/03/2026	2.5	Baht	01/01/2025 - 31/12/2025	NP	13/05/2026	27.00	9.3%	10
SCGP	31/03/2026	0.35	Baht	01/01/2025 - 31/12/2025	NP	21/04/2026	19.50	1.8%	1
SUC	31/03/2026	1.5	Baht	-	RE	13/05/2026	28.75	5.2%	10
JAPAN13	01/04/2026	0.02505	Baht	-	-	11/05/2026	4.92	0.5%	-
JEPI19	01/04/2026	0.031	Baht	-	-	30/04/2026	6.20	0.5%	-
NDX01	01/04/2026	0.0071	Baht	-	-	11/05/2026	20.60	0.0%	-
SCC	01/04/2026	2.5	Baht	01/01/2025 - 31/12/2025	NP	21/04/2026	193.50	1.3%	1
SPBOND80	01/04/2026	0.02616	Baht	-	-	06/05/2026	8.35	0.3%	-
SYNTEC	01/04/2026	0.07	Baht	01/07/2025 - 31/12/2025	NP	15/05/2026	1.69	4.1%	1
CSCO06	02/04/2026	0.01621	Baht	-	-	15/05/2026	3.36	0.5%	-
AXP06	03/04/2026	0.00651	Baht	-	-	29/05/2026	2.44	0.3%	-
ATP30	07/04/2026	0.04	Baht	01/01/2025 - 31/12/2025	Both	24/04/2026	0.85	4.7%	0.25
DCC	07/04/2026	0.01	Baht	01/10/2025 - 31/12/2025	NP	30/04/2026	1.21	0.8%	0.1
JPMUS06	07/04/2026	0.0137	Baht	-	-	29/05/2026	3.24	0.4%	-
JPMUS19	07/04/2026	0.082	Baht	-	-	29/05/2026	19.20	0.4%	-
SMPC	07/04/2026	0.3	Baht	01/07/2025 - 31/12/2025	NP	30/04/2026	9.15	3.3%	1
DBS19	08/04/2026	0.1993	Baht	-	-	05/05/2026	14.70	1.4%	-
JD80	08/04/2026	0.15702	Baht	-	-	20/05/2026	4.70	3.3%	-
TCOAT	08/04/2026	0.5	Baht	-	RE	26/05/2026	26.75	1.9%	10
BLC	09/04/2026	0.05	Baht	01/01/2025 - 31/12/2025	NP	30/04/2026	3.90	1.3%	0.5
BTNC	09/04/2026	1.5	Baht	01/01/2025 - 31/12/2025	NP	29/04/2026	19.80	7.6%	10
CRM01	09/04/2026	0.0037	Baht	-	-	20/05/2026	3.30	0.1%	-
CRM06	09/04/2026	0.00482	Baht	-	-	20/05/2026	2.38	0.2%	-
CRM80	09/04/2026	0.01389	Baht	-	-	20/05/2026	5.90	0.2%	-
GC	09/04/2026	0.22	Baht	01/07/2025 - 31/12/2025	NP	30/04/2026	4.46	4.9%	0.5
GPI	09/04/2026	0.07	Baht	01/06/2025 - 31/12/2025	NP	27/04/2026	1.64	4.3%	0.5

Source: SET

Exhibit 20: Upcoming XD [2/8]

Symbol	X-Date	Dividend (per Share)	Unit	Operation Period	Source of Dividend	Payment Date	Price	Div Yield	Par
MA80	09/04/2026	0.00275	Baht	-	-	04/06/2026	1.65	0.2%	-
ORCL01	09/04/2026	0.0072	Baht	-	-	21/05/2026	2.98	0.2%	-
ORCL06	09/04/2026	0.00548	Baht	-	-	08/05/2026	1.91	0.3%	-
ORCL19	09/04/2026	0.0133	Baht	-	-	08/05/2026	4.78	0.3%	-
S11	09/04/2026	0.14	Baht	01/01/2025 - 31/12/2025	NP	30/04/2026	3.86	3.6%	1
AUCT	10/04/2026	0.205	Baht	01/07/2025 - 31/12/2025	Both	30/04/2026	4.98	4.1%	0.25
CATL01	10/04/2026	0.0652	Baht	-	-	08/06/2026	6.05	1.1%	-
CATL80	10/04/2026	0.31754	Baht	-	-	10/06/2026	26.50	1.2%	-
KTB	10/04/2026	2.24	Baht	01/01/2025 - 31/12/2025	NP	30/04/2026	35.00	6.4%	5.15
KTB-P	10/04/2026	2.3945	Baht	01/01/2025 - 31/12/2025	NP	30/04/2026	167.50	1.4%	5.15
KTC	10/04/2026	1.77	Baht	01/01/2025 - 31/12/2025	NP	30/04/2026	29.25	6.1%	1
MRVL80	10/04/2026	0.00196	Baht	-	-	27/05/2026	3.20	0.1%	-
QTC	10/04/2026	0.2	Baht	-	RE	30/04/2026	3.56	5.6%	1
TPLAS	10/04/2026	0.04	Baht	01/01/2025 - 31/12/2025	Both	08/05/2026	1.14	3.5%	0.5
WASH	10/04/2026	0.1066	Baht	01/01/2025 - 31/12/2025	NP	29/04/2026	5.20	2.1%	0.5
ABBV19	16/04/2026	0.0455	Baht	-	-	29/05/2026	6.80	0.7%	-
BANPU	16/04/2026	0.18	Baht	-	RE	29/04/2026	5.90	3.1%	1
BPP	16/04/2026	0.35	Baht	01/07/2025 - 31/12/2025	NP	28/04/2026	12.20	2.9%	10
MEB	16/04/2026	1.1	Baht	01/01/2025 - 31/12/2025	NP	05/05/2026	13.90	7.9%	0.5
TCAP	16/04/2026	2.2	Baht	-	RE	30/04/2026	56.00	3.9%	10
TCAP-P	16/04/2026	2.2	Baht	-	RE	30/04/2026	560.00	0.4%	10
TMT	16/04/2026	0.1	Baht	01/01/2025 - 31/12/2025	NP	30/04/2026	3.42	2.9%	1
CFARM	17/04/2026	0.02	Baht	01/01/2025 - 31/12/2025	Both	07/05/2026	0.83	2.4%	1
IT	17/04/2026	0.21	Baht	01/01/2025 - 31/12/2025	NP	05/05/2026	3.98	5.3%	1
KWC	17/04/2026	11.5	Baht	01/01/2025 - 31/12/2025	NP	05/05/2026	279.00	4.1%	10
MAJOR	17/04/2026	0.25	Baht	01/01/2025 - 31/12/2025	NP	06/05/2026	7.45	3.4%	1
STP	17/04/2026	0.42	Baht	01/07/2025 - 31/12/2025	NP	08/05/2026	10.70	3.9%	1
TOG	17/04/2026	0.3	Baht	01/07/2025 - 31/12/2025	Both	06/05/2026	6.85	4.4%	1
UKEM	17/04/2026	0.015	Baht	01/01/2025 - 31/12/2025	NP	07/05/2026	0.77	1.9%	0.25
CPAXT	20/04/2026	0.53	Baht	01/01/2025 - 31/12/2025	NP	07/05/2026	15.30	3.5%	1
FERRARI80	20/04/2026	0.0132	Baht	-	-	28/05/2026	1.07	1.2%	-
KGI	20/04/2026	0.31	Baht	01/01/2025 - 31/12/2025	NP	07/05/2026	4.32	7.2%	1
MCS	20/04/2026	0.7	Baht	01/01/2025 - 31/12/2025	NP	07/05/2026	9.35	7.5%	1
PLANB	20/04/2026	0.0435	Baht	-	RE	08/05/2026	3.78	1.2%	0.1
SCB	20/04/2026	9.28	Baht	01/01/2025 - 31/12/2025	NP	07/05/2026	146.00	6.4%	10
SMART	20/04/2026	0.0675	Baht	01/01/2025 - 31/12/2025	NP	05/05/2026	0.61	11.1%	0.5
SMIT	20/04/2026	0.14	Baht	01/07/2025 - 31/12/2025	NP	07/05/2026	3.50	4.0%	1
YUASA	20/04/2026	0.9023	Baht	01/01/2025 - 31/12/2025	NP	08/05/2026	14.70	6.1%	1
BLA	21/04/2026	0.48	Baht	-	RE	-	19.50	2.5%	1
CRC	21/04/2026	1.11	Baht	01/01/2025 - 31/12/2025	NP	08/05/2026	18.50	6.0%	1
DELL19	21/04/2026	0.0165	Baht	-	-	29/05/2026	6.00	0.3%	-
HERMES80	21/04/2026	0.04731	Baht	-	-	20/05/2026	6.30	0.8%	-
KBANK	21/04/2026	12	Baht	-	RE	08/05/2026	191.50	6.3%	10
MODERN	21/04/2026	0.15	Baht	01/01/2025 - 31/12/2025	Both	07/05/2026	2.02	7.4%	1
SPA	21/04/2026	0.1	Baht	01/01/2025 - 31/12/2025	NP	07/05/2026	3.32	3.0%	0.25
STA	21/04/2026	0.5	Baht	-	RE	08/05/2026	17.00	2.9%	1
STGT	21/04/2026	0.5	Baht	-	RE	08/05/2026	9.65	5.2%	0.5
AIT	22/04/2026	0.21	Baht	01/01/2025 - 31/12/2025	NP	08/05/2026	4.84	4.3%	1
BBL	22/04/2026	8	Baht	-	RE	08/05/2026	168.50	4.7%	10
HMPRO	22/04/2026	0.22	Baht	01/07/2025 - 31/12/2025	NP	07/05/2026	6.20	3.5%	1
PSL	22/04/2026	0.1	Baht	-	RE	07/05/2026	6.95	1.4%	1
TACC	22/04/2026	0.21	Baht	01/01/2025 - 31/12/2025	NP	06/05/2026	5.40	3.9%	0.25
NER	23/04/2026	0.26	Baht	01/01/2025 - 31/12/2025	NP	07/05/2026	4.76	5.5%	0.5
ASML01	24/04/2026	0.0619	Baht	-	-	27/05/2026	37.75	0.2%	-

Source: SET

Exhibit 21: Upcoming XD [3/8]

Symbol	X-Date	Dividend (per Share)	Unit	Operation Period	Source of Dividend	Payment Date	Price	Div Yield	Par
BR	24/04/2026	0.02	Baht	01/01/2025 - 31/12/2025	Both	15/05/2026	1.60	1.3%	5
NUT	24/04/2026	0.17	Baht	01/07/2025 - 31/12/2025	Both	13/05/2026	4.18	4.1%	0.5
THAI	24/04/2026	0.21	Baht	01/01/2025 - 31/12/2025	NP	18/05/2026	6.35	3.3%	1.3
TPS	24/04/2026	0.12	Baht	01/01/2025 - 31/12/2025	NP	19/05/2026	3.30	3.6%	0.5
UOB19	24/04/2026	0.1716	Baht	-	-	22/05/2026	9.35	1.8%	-
ADB	27/04/2026	0.03	Baht	-	RE	15/05/2026	0.58	5.2%	0.5
AMARC	27/04/2026	0.1	Baht	01/01/2025 - 31/12/2025	NP	08/05/2026	3.42	2.9%	0.5
ANI	27/04/2026	0.05	Baht	01/01/2025 - 31/12/2025	NP	19/05/2026	2.68	1.9%	0.5
JPARK	27/04/2026	0.1	Baht	01/01/2025 - 31/12/2025	NP	20/05/2026	2.94	3.4%	0.5
LHFG	27/04/2026	0.05	Baht	01/01/2025 - 31/12/2025	Both	15/05/2026	1.01	5.0%	1
LPH	27/04/2026	0.1	Baht	01/01/2025 - 31/12/2025	Both	08/05/2026	3.68	2.7%	0.5
QH	27/04/2026	0.07	Baht	01/07/2025 - 31/12/2025	NP	19/05/2026	1.35	5.2%	1
SRICHA	27/04/2026	1	Baht	-	RE	05/05/2026	14.10	7.1%	1
TITLE	27/04/2026	0.4	Baht	01/01/2025 - 31/12/2025	NP	15/05/2026	8.00	5.0%	0.5
TKS	27/04/2026	0.36	Baht	01/07/2025 - 31/12/2025	Both	14/05/2026	6.25	5.8%	1
TTB	27/04/2026	0.071	Baht	01/07/2025 - 31/12/2025	NP	20/05/2026	2.26	3.1%	0.95
APCO	28/04/2026	0.091	Baht	01/01/2025 - 31/12/2025	Both	13/05/2026	2.76	3.3%	0.5
III	28/04/2026	0.15	Baht	01/01/2025 - 31/12/2025	Both	15/05/2026	3.84	3.9%	0.5
IROYAL	28/04/2026	0.43	Baht	01/01/2025 - 31/12/2025	Both	15/05/2026	5.70	7.5%	0.5
JSP	28/04/2026	0.0474	Baht	01/01/2025 - 31/12/2025	NP	15/05/2026	1.95	2.4%	0.5
LVMH01	28/04/2026	0.1277	Baht	-	-	27/05/2026	11.00	1.2%	-
MCA	28/04/2026	0.044	Baht	01/01/2025 - 31/12/2025	NP	19/05/2026	1.15	3.8%	0.5
MPJ	28/04/2026	0.34	Baht	01/01/2025 - 31/12/2025	NP	19/05/2026	3.90	8.7%	0.5
MTC	28/04/2026	0.29	Baht	01/01/2025 - 31/12/2025	NP	15/05/2026	29.25	1.0%	1
SPREME	28/04/2026	0.12	Baht	01/01/2025 - 31/12/2025	NP	20/05/2026	1.56	7.7%	0.5
STEG19	28/04/2026	0.2671	Baht	-	-	29/05/2026	28.25	0.9%	-
SUN	28/04/2026	0.05	Baht	01/07/2025 - 31/12/2025	NP	20/05/2026	2.72	1.8%	0.5
UAC	28/04/2026	0.2	Baht	01/01/2025 - 31/12/2025	Both	15/05/2026	2.80	7.1%	0.5
WHAUP	28/04/2026	0.1925	Baht	01/01/2025 - 31/12/2025	Both	18/05/2026	4.42	4.4%	1
88TH	29/04/2026	0.185	Baht	01/01/2025 - 31/12/2025	NP	19/05/2026	5.15	3.6%	1
ACG	29/04/2026	0.04	Baht	01/01/2025 - 31/12/2025	Both	18/05/2026	0.65	6.2%	0.5
BBIK	29/04/2026	0.48	Baht	01/01/2025 - 31/12/2025	NP	20/05/2026	19.30	2.5%	0.5
BCH	29/04/2026	0.3	Baht	01/01/2025 - 31/12/2025	NP	22/05/2026	9.45	3.2%	1
BIS	29/04/2026	0.04	Baht	01/07/2025 - 31/12/2025	NP	18/05/2026	2.06	1.9%	0.5
BJC	29/04/2026	0.36	Baht	01/07/2025 - 31/12/2025	NP	21/05/2026	13.90	2.6%	1
DTCI	29/04/2026	0.25	Baht	-	RE	22/05/2026	19.00	1.3%	10
EASON	29/04/2026	0.08	Baht	01/01/2025 - 31/12/2025	NP	15/05/2026	1.11	7.2%	1
INET	29/04/2026	0.126	Baht	01/01/2025 - 31/12/2025	NP	22/05/2026	3.58	3.5%	1
KKP	29/04/2026	4.2	Baht	01/01/2025 - 31/12/2025	NP	21/05/2026	74.00	5.7%	10
KLINIQ	29/04/2026	0.75	Baht	01/01/2025 - 31/12/2025	NP	21/05/2026	23.90	3.1%	0.5
LH	29/04/2026	0.12	Baht	01/07/2025 - 31/12/2025	Both	20/05/2026	3.70	3.2%	1
LOREAL80	29/04/2026	0.0263	Baht	-	-	27/05/2026	1.32	2.0%	-
MEDEZE	29/04/2026	0.08	Baht	01/01/2025 - 31/12/2025	Both	19/05/2026	6.20	1.3%	0.5
MOONG	29/04/2026	0.16	Baht	01/01/2025 - 31/12/2025	NP	19/05/2026	2.24	7.1%	0.5
MOSHI	29/04/2026	1.22	Baht	01/01/2025 - 31/12/2025	NP	22/05/2026	35.00	3.5%	1
PANEL	29/04/2026	0.033	Baht	01/01/2025 - 31/12/2025	NP	20/05/2026	1.22	2.7%	0.5
PCE	29/04/2026	0.08	Baht	01/01/2025 - 31/12/2025	NP	20/05/2026	2.56	3.1%	1
PROUD	29/04/2026	0.09	Baht	01/01/2025 - 31/12/2025	NP	18/05/2026	1.00	9.0%	1
READY	29/04/2026	0.15	Baht	01/07/2025 - 31/12/2025	Both	20/05/2026	3.12	4.8%	0.5
RPC	29/04/2026	0.01	Baht	01/01/2025 - 31/12/2025	Both	20/05/2026	0.36	2.8%	1
RPH	29/04/2026	0.18	Baht	01/07/2025 - 31/12/2025	NP	19/05/2026	4.92	3.7%	1
SAK	29/04/2026	0.2	Baht	01/01/2025 - 31/12/2025	NP	20/05/2026	3.30	6.1%	1
SALEE	29/04/2026	0.012	Baht	-	RE	22/05/2026	0.39	3.1%	0.25
SAMCO	29/04/2026	0.02	Baht	01/01/2025 - 31/12/2025	NP	20/05/2026	0.72	2.8%	1

Source: SET

Exhibit 22: Upcoming XD [4/8]

Symbol	X-Date	Dividend (per Share)	Unit	Operation Period	Source of Dividend	Payment Date	Price	Div Yield	Par
SAPPE	29/04/2026	1.75	Baht	01/01/2025 - 31/12/2025	NP	21/05/2026	30.75	5.7%	1
SKR	29/04/2026	0.16	Baht	01/01/2025 - 31/12/2025	NP	15/05/2026	7.05	2.3%	0.5
TERA	29/04/2026	0.067	Baht	-	RE	20/05/2026	0.99	6.8%	0.5
TISCO	29/04/2026	5.75	Baht	01/01/2025 - 31/12/2025	NP	19/05/2026	113.00	5.1%	10
TISCO-P	29/04/2026	5.75	Baht	01/01/2025 - 31/12/2025	NP	19/05/2026	1,346.00	0.4%	10
TWPC	29/04/2026	0.114	Baht	01/01/2025 - 31/12/2025	NP	20/05/2026	2.82	4.0%	1
AHC	30/04/2026	0.52	Baht	-	RE	20/05/2026	13.00	4.0%	1
ASW	30/04/2026	0.5	Baht	01/01/2025 - 31/12/2025	NP	22/05/2026	7.15	7.0%	1
AURA	30/04/2026	0.56	Baht	01/01/2025 - 31/12/2025	NP	21/05/2026	12.90	4.3%	1
CIMBT	30/04/2026	0.059	Baht	01/01/2025 - 31/12/2025	NP	21/05/2026	0.37	15.9%	0.5
CPALL	30/04/2026	1.65	Baht	01/01/2025 - 31/12/2025	NP	22/05/2026	45.50	3.6%	1
CSS	30/04/2026	0.02	Baht	01/07/2025 - 31/12/2025	Both	22/05/2026	0.77	2.6%	0.5
D	30/04/2026	0.105	Baht	01/01/2025 - 31/12/2025	Both	19/05/2026	2.76	3.8%	0.5
DDD	30/04/2026	0.03	Baht	01/01/2025 - 31/12/2025	Both	22/05/2026	5.60	0.5%	1
GABLE	30/04/2026	0.32	Baht	01/01/2025 - 31/12/2025	NP	21/05/2026	3.90	8.2%	1
GYT	30/04/2026	8	Baht	01/01/2025 - 31/12/2025	NP	21/05/2026	184.00	4.3%	10
HTC	30/04/2026	0.54	Baht	01/07/2025 - 31/12/2025	NP	20/05/2026	15.30	3.5%	0.5
JUBILE	30/04/2026	0.14	Baht	01/07/2025 - 31/12/2025	NP	15/05/2026	7.25	1.9%	1
KISS	30/04/2026	0.1	Baht	01/07/2025 - 31/12/2025	Both	22/05/2026	3.24	3.1%	0.5
LRH	30/04/2026	1.45	Baht	-	RE	20/05/2026	33.75	4.3%	10
MGI	30/04/2026	0.25	Baht	01/01/2025 - 31/12/2025	NP	22/05/2026	5.30	4.7%	0.5
MICRO	30/04/2026	0.027	Baht	01/01/2025 - 31/12/2025	NP	22/05/2026	0.84	3.2%	1
MITSIB	30/04/2026	0.02	Baht	01/01/2025 - 31/12/2025	NP	18/05/2026	0.54	3.7%	0.5
NSL	30/04/2026	0.55	Baht	01/01/2025 - 31/12/2025	NP	18/05/2026	22.30	2.5%	1
PACO	30/04/2026	0.1	Baht	01/01/2025 - 31/12/2025	Both	18/05/2026	1.28	7.8%	0.5
PIMO	30/04/2026	0.026	Baht	01/07/2025 - 31/12/2025	NP	20/05/2026	1.01	2.6%	0.25
PR9	30/04/2026	0.3	Baht	01/07/2025 - 31/12/2025	NP	22/05/2026	16.50	1.8%	1
PREB	30/04/2026	0.2	Baht	01/01/2025 - 31/12/2025	NP	22/05/2026	3.82	5.2%	1
ROJNA	30/04/2026	0.5	Baht	-	RE	22/05/2026	5.05	9.9%	1
SABINA	30/04/2026	0.6	Baht	-	RE	19/05/2026	15.50	3.9%	1
SAUCE	30/04/2026	1.81	Baht	01/01/2025 - 31/12/2025	NP	19/05/2026	41.50	4.4%	1
SJWD	30/04/2026	0.3	Baht	01/07/2025 - 31/12/2025	NP	20/05/2026	7.50	4.0%	0.5
SMT	30/04/2026	0.03	Baht	-	RE	21/05/2026	1.32	2.3%	1
SYNEX	30/04/2026	0.38	Baht	01/07/2025 - 31/12/2025	NP	12/05/2026	9.40	4.0%	1
TGH	30/04/2026	0.1	Baht	01/01/2025 - 31/12/2025	NP	25/05/2026	10.20	1.0%	10
TRUBB	30/04/2026	0.0031	Baht	01/01/2025 - 31/12/2025	NP	21/05/2026	0.87	0.4%	1
TRUBB	30/04/2026	36 : 1	Share	01/01/2025 - 31/12/2025	NP	21/05/2026	0.87	-	1
AMATA	05/05/2026	0.75	Baht	01/01/2025 - 31/12/2025	NP	26/05/2026	19.00	3.9%	1
BAM	05/05/2026	0.5	Baht	01/01/2025 - 31/12/2025	NP	22/05/2026	6.90	7.2%	5
BAY	05/05/2026	0.9	Baht	-	RE	21/05/2026	25.50	3.5%	10
BE8	05/05/2026	0.04	Baht	01/01/2025 - 31/12/2025	NP	22/05/2026	5.75	0.7%	0.5
BEC	05/05/2026	0.06	Baht	-	RE	21/05/2026	1.93	3.1%	1
COCOCO	05/05/2026	0.12	Baht	-	RE	22/05/2026	5.60	2.1%	0.5
CPF	05/05/2026	0.25	Baht	01/01/2025 - 31/12/2025	NP	22/05/2026	19.80	1.3%	1
EASTW	05/05/2026	0.01	Baht	01/01/2025 - 31/12/2025	Both	26/05/2026	2.86	0.3%	1
EKH	05/05/2026	0.3	Baht	01/01/2025 - 31/12/2025	Both	18/05/2026	5.00	6.0%	0.5
FLOYD	05/05/2026	0.1	Baht	01/01/2025 - 31/12/2025	NP	22/05/2026	1.11	9.0%	0.5
FPI	05/05/2026	0.04	Baht	01/07/2025 - 31/12/2025	NP	15/05/2026	1.68	2.4%	0.25
FTE	05/05/2026	0.09	Baht	01/07/2025 - 31/12/2025	NP	22/05/2026	2.02	4.5%	0.5
IND	05/05/2026	0.073	Baht	01/01/2025 - 31/12/2025	NP	20/05/2026	1.14	6.4%	0.5
IVL	05/05/2026	0.175	Baht	01/01/2025 - 31/12/2025	NP	22/05/2026	22.50	0.8%	1
KCG	05/05/2026	0.51	Baht	01/01/2025 - 31/12/2025	NP	22/05/2026	9.45	5.4%	1
KWM	05/05/2026	0.0307	Baht	-	RE	22/05/2026	0.86	3.6%	0.5
MANRIN	05/05/2026	0.25	Baht	01/01/2025 - 31/12/2025	Both	20/05/2026	23.10	1.1%	10

Source: SET

Exhibit 23: Upcoming XD [5/8]

Symbol	X-Date	Dividend (per Share)	Unit	Operation Period	Source of Dividend	Payment Date	Price	Div Yield	Par
MINT	05/05/2026	0.4	Baht	01/01/2025 - 31/12/2025	NP	22/05/2026	22.40	1.8%	1
MOTHER	05/05/2026	0.034	Baht	01/01/2025 - 31/12/2025	NP	22/05/2026	1.11	3.1%	0.5
NEO	05/05/2026	1.35	Baht	01/01/2025 - 31/12/2025	NP	21/05/2026	18.80	7.2%	1
NEW	05/05/2026	1.6	Baht	01/01/2025 - 31/12/2025	NP	22/05/2026	125.50	1.3%	10
NPK	05/05/2026	0.25	Baht	-	RE	15/05/2026	14.00	1.8%	10
NYT	05/05/2026	0.5	Baht	01/01/2025 - 31/12/2025	NP	22/05/2026	4.06	12.3%	0.5
ONEE	05/05/2026	0.13	Baht	01/07/2025 - 31/12/2025	NP	20/05/2026	2.54	5.1%	2
ORN	05/05/2026	0.02	Baht	01/01/2025 - 31/12/2025	Both	22/05/2026	0.78	2.6%	1
PHG	05/05/2026	0.7	Baht	01/01/2025 - 31/12/2025	NP	27/05/2026	12.50	5.6%	1
PRAPAT	05/05/2026	0.04	Baht	01/01/2025 - 31/12/2025	NP	25/05/2026	0.74	5.4%	0.5
SANOFI80	05/05/2026	0.15275	Baht	-	-	02/06/2026	3.02	5.1%	-
SEAFCO	05/05/2026	0.12	Baht	01/01/2025 - 31/12/2025	NP	20/05/2026	2.42	5.0%	0.5
SICT	05/05/2026	0.025	Baht	01/01/2025 - 31/12/2025	NP	26/05/2026	2.34	1.1%	0.5
SINO	05/05/2026	0.028846	Baht	01/07/2025 - 31/12/2025	Both	22/05/2026	0.85	3.4%	0.5
SITHAI	05/05/2026	0.04	Baht	-	RE	22/05/2026	1.01	4.0%	1
SNNP	05/05/2026	0.345	Baht	01/01/2025 - 31/12/2025	NP	21/05/2026	7.15	4.8%	0.5
SNPS	05/05/2026	0.19	Baht	-	RE	15/05/2026	4.86	3.9%	1
SPBOND80	05/05/2026	0.02616	Baht	-	-	29/05/2026	8.35	0.3%	-
SSF	05/05/2026	0.3704	Baht	01/01/2025 - 31/12/2025	Both	21/05/2026	5.10	7.3%	1
SSP	05/05/2026	0.205	Baht	01/01/2025 - 31/12/2025	NP	21/05/2026	3.40	6.0%	1
TKC	05/05/2026	0.2	Baht	01/01/2025 - 31/12/2025	NP	20/05/2026	7.35	2.7%	1
TPBI	05/05/2026	0.23	Baht	01/01/2025 - 31/12/2025	NP	22/05/2026	3.16	7.3%	1
UBA	05/05/2026	0.09725	Baht	01/01/2025 - 31/12/2025	NP	20/05/2026	1.07	9.1%	0.5
VENTURE19	05/05/2026	0.1212	Baht	-	-	05/06/2026	4.04	3.0%	-
VRANDA	05/05/2026	0.185	Baht	01/01/2025 - 31/12/2025	NP	20/05/2026	4.24	4.4%	5
WINNER	05/05/2026	0.09	Baht	-	RE	19/05/2026	2.08	4.3%	0.25
ALUCON	06/05/2026	16	Baht	01/01/2025 - 31/12/2025	NP	15/05/2026	218.00	7.3%	10
AP	06/05/2026	0.52	Baht	01/01/2025 - 31/12/2025	NP	21/05/2026	8.45	6.2%	1
ARROW	06/05/2026	0.3	Baht	01/01/2025 - 31/12/2025	Both	22/05/2026	5.25	5.7%	1
BAFS	06/05/2026	0.22	Baht	01/07/2025 - 31/12/2025	NP	22/05/2026	8.40	2.6%	1
BKGI	06/05/2026	0.05	Baht	01/01/2025 - 31/12/2025	NP	28/05/2026	1.41	3.5%	0.5
BRR	06/05/2026	0.165	Baht	01/01/2025 - 31/12/2025	NP	22/05/2026	3.88	4.3%	1
CENTEL	06/05/2026	0.67	Baht	01/01/2025 - 31/12/2025	NP	21/05/2026	33.75	2.0%	1
CHG	06/05/2026	0.05	Baht	01/01/2025 - 31/12/2025	NP	22/05/2026	1.43	3.5%	0.1
COLOR	06/05/2026	0.03	Baht	01/01/2025 - 31/12/2025	Both	22/05/2026	1.03	2.9%	1
CREDIT	06/05/2026	0.98	Baht	01/01/2025 - 31/12/2025	NP	22/05/2026	17.00	5.8%	5
DITTO	06/05/2026	0.25	Baht	01/01/2025 - 31/12/2025	NP	21/05/2026	10.60	2.4%	0.5
ILINK	06/05/2026	0.31	Baht	01/01/2025 - 31/12/2025	NP	21/05/2026	4.52	6.9%	1
IP	06/05/2026	0.073	Baht	01/01/2025 - 31/12/2025	NP	25/05/2026	4.00	1.8%	0.5
L&E	06/05/2026	0.04	Baht	-	RE	20/05/2026	1.20	3.3%	1
MATI	06/05/2026	0.1	Baht	-	RE	27/05/2026	3.04	3.3%	1
MFEC	06/05/2026	0.5	Baht	01/01/2025 - 31/12/2025	NP	15/05/2026	5.85	8.5%	1
NCP	06/05/2026	0.057	Baht	01/01/2025 - 31/12/2025	Both	22/05/2026	1.05	5.4%	0.5
NETBAY	06/05/2026	0.8	Baht	01/07/2025 - 31/12/2025	NP	20/05/2026	18.00	4.4%	1
PIS	06/05/2026	0.2	Baht	01/01/2025 - 31/12/2025	NP	27/05/2026	3.66	5.5%	0.5
PL	06/05/2026	0.062	Baht	01/01/2025 - 31/12/2025	NP	22/05/2026	1.28	4.8%	1
PMC	06/05/2026	0.018314	Baht	01/01/2025 - 31/12/2025	NP	26/05/2026	0.88	2.1%	1
PMC	06/05/2026	20 : 1	Share	01/01/2025 - 31/12/2025	NP	26/05/2026	0.88	-	1
PRAKIT	06/05/2026	0.9	Baht	01/01/2025 - 31/12/2025	NP	21/05/2026	11.60	7.8%	1
PRI	06/05/2026	0.1875	Baht	01/04/2025 - 31/12/2025	Both	27/05/2026	3.98	4.7%	0.5
PRM	06/05/2026	0.25	Baht	-	RE	26/05/2026	7.70	3.2%	1
ROCK	06/05/2026	1	Baht	01/01/2025 - 31/12/2025	NP	26/05/2026	11.30	8.8%	10
SELIC	06/05/2026	0.03522	Baht	01/01/2025 - 31/12/2025	NP	22/05/2026	2.64	1.3%	0.5
SELIC	06/05/2026	23 : 1	Share	01/01/2025 - 31/12/2025	NP	22/05/2026	2.64	-	0.5

Source: SET

Exhibit 24: Upcoming XD [6/8]

Symbol	X-Date	Dividend (per Share)	Unit	Operation Period	Source of Dividend	Payment Date	Price	Div Yield	Par
SEMB19	06/05/2026	0.129	Baht	-	-	29/05/2026	5.50	2.3%	-
SPALI	06/05/2026	0.7	Baht	01/07/2025 - 31/12/2025	NP	19/05/2026	16.50	4.2%	1
SPI	06/05/2026	0.2	Baht	-	RE	21/05/2026	43.50	0.5%	1
SPI	06/05/2026	2 : 1	Share	-	RE	21/05/2026	43.50	-	1
STARM	06/05/2026	0.058	Baht	01/01/2025 - 31/12/2025	NP	26/05/2026	0.87	6.7%	0.5
TAN	06/05/2026	0.27	Baht	01/01/2025 - 31/12/2025	NP	26/05/2026	4.06	6.7%	1
TATG	06/05/2026	0.07	Baht	01/01/2025 - 31/12/2025	NP	22/05/2026	0.97	7.2%	1
TGE	06/05/2026	0.00319	Baht	-	RE	22/05/2026	1.22	0.3%	0.5
TOA	06/05/2026	0.39	Baht	01/07/2025 - 31/12/2025	NP	26/05/2026	13.00	3.0%	1
VIBHA	06/05/2026	0.06	Baht	01/01/2025 - 31/12/2025	NP	27/05/2026	1.40	4.3%	0.1
APP	07/05/2026	0.23	Baht	01/01/2025 - 31/12/2025	NP	20/05/2026	2.64	8.7%	0.5
ASEFA	07/05/2026	0.35	Baht	01/01/2025 - 31/12/2025	NP	21/05/2026	4.04	8.7%	1
AU	07/05/2026	0.25	Baht	01/01/2025 - 31/12/2025	NP	25/05/2026	4.86	5.1%	0.1
AWC	07/05/2026	0.08	Baht	01/01/2025 - 31/12/2025	Both	28/05/2026	2.08	3.8%	1
AYUD	07/05/2026	1.67	Baht	01/01/2025 - 31/12/2025	Both	29/05/2026	36.50	4.6%	1
BPS	07/05/2026	0.0125	Baht	01/01/2025 - 31/12/2025	Both	25/05/2026	0.41	3.0%	0.5
CCP	07/05/2026	0.01	Baht	01/01/2025 - 31/12/2025	NP	27/05/2026	0.26	3.8%	0.25
CH	07/05/2026	0.03	Baht	-	RE	26/05/2026	1.59	1.9%	0.5
CHARAN	07/05/2026	0.9	Baht	01/01/2025 - 31/12/2025	NP	28/05/2026	16.00	5.6%	10
CKP	07/05/2026	0.088	Baht	01/01/2025 - 31/12/2025	Both	22/05/2026	2.28	3.9%	1
ESTAR	07/05/2026	0.02	Baht	01/01/2025 - 31/12/2025	NP	26/05/2026	0.22	9.1%	1
FM	07/05/2026	0.2	Baht	01/07/2025 - 31/12/2025	NP	22/05/2026	4.00	5.0%	2
HARN	07/05/2026	0.12	Baht	01/01/2025 - 31/12/2025	NP	22/05/2026	2.02	5.9%	0.5
ICC	07/05/2026	0.7	Baht	-	RE	26/05/2026	24.70	2.8%	1
KTMS	07/05/2026	0.013	Baht	01/01/2025 - 31/12/2025	NP	26/05/2026	1.41	0.9%	0.5
KUMWEL	07/05/2026	0.06	Baht	01/01/2025 - 31/12/2025	NP	22/05/2026	1.04	5.8%	0.5
MENA	07/05/2026	0.015	Baht	01/01/2025 - 31/12/2025	NP	21/05/2026	0.65	2.3%	0.5
MFC	07/05/2026	1.25	Baht	01/01/2025 - 31/12/2025	NP	25/05/2026	22.50	5.6%	1
MGT	07/05/2026	0.065	Baht	01/07/2025 - 31/12/2025	NP	22/05/2026	1.87	3.5%	0.5
NKT	07/05/2026	0.18	Baht	01/01/2025 - 31/12/2025	NP	26/05/2026	4.08	4.4%	1
NNCL	07/05/2026	0.06	Baht	01/01/2025 - 31/12/2025	NP	25/05/2026	1.55	3.9%	1
NTF	07/05/2026	0.1145	Baht	01/10/2025 - 31/12/2025	NP	22/05/2026	11.80	1.0%	0.5
OCC	07/05/2026	0.05	Baht	-	RE	27/05/2026	9.85	0.5%	1
OSP	07/05/2026	0.4	Baht	01/07/2025 - 31/12/2025	Both	28/05/2026	14.60	2.7%	1
PAF	07/05/2026	0.01	Baht	01/01/2025 - 31/12/2025	NP	25/05/2026	0.64	1.6%	0.51
PCC	07/05/2026	0.14	Baht	01/01/2025 - 31/12/2025	NP	28/05/2026	2.66	5.3%	1
PCSGH	07/05/2026	0.12	Baht	01/07/2025 - 31/12/2025	NP	21/05/2026	3.08	3.9%	1
PIN	07/05/2026	0.216	Baht	01/01/2025 - 31/12/2025	NP	22/05/2026	4.32	5.0%	1
RBF	07/05/2026	0.21	Baht	01/01/2025 - 31/12/2025	NP	22/05/2026	3.70	5.7%	1
S&J	07/05/2026	1.45	Baht	01/01/2025 - 31/12/2025	NP	27/05/2026	35.00	4.1%	1
SAFE	07/05/2026	0.41	Baht	01/01/2025 - 31/12/2025	NP	22/05/2026	5.95	6.9%	1
SAWAD	07/05/2026	0.35	Baht	01/01/2025 - 31/12/2025	NP	28/05/2026	23.00	1.5%	1
SC	07/05/2026	0.1	Baht	01/01/2025 - 31/12/2025	NP	26/05/2026	1.96	5.1%	1
SCAP	07/05/2026	0.07	Baht	01/01/2025 - 31/12/2025	Both	26/05/2026	1.07	6.5%	1
SHANG	07/05/2026	0.5	Baht	01/01/2025 - 31/12/2025	NP	26/05/2026	44.25	1.1%	10
SK	07/05/2026	0.03	Baht	01/01/2025 - 31/12/2025	Both	22/05/2026	0.55	5.5%	0.5
SKY	07/05/2026	0.3	Baht	01/01/2025 - 31/12/2025	NP	29/05/2026	12.50	2.4%	0.5
SO	07/05/2026	0.18	Baht	01/07/2025 - 31/12/2025	Both	20/05/2026	4.56	3.9%	1
SORKON	07/05/2026	0.25	Baht	01/01/2025 - 31/12/2025	NP	25/05/2026	3.78	6.6%	1
SPC	07/05/2026	1.6	Baht	01/01/2025 - 31/12/2025	NP	26/05/2026	55.50	2.9%	1
SSSC	07/05/2026	0.165	Baht	01/01/2025 - 31/12/2025	NP	25/05/2026	2.18	7.6%	1
SWC	07/05/2026	0.2	Baht	01/07/2025 - 31/12/2025	NP	22/05/2026	4.10	4.9%	0.5
TBN	07/05/2026	0.21	Baht	01/01/2025 - 31/12/2025	NP	27/05/2026	3.96	5.3%	0.5
TC	07/05/2026	0.3	Baht	01/01/2025 - 31/12/2025	NP	27/05/2026	5.45	5.5%	1

Source: SET

Exhibit 25: Upcoming XD [7/8]

Symbol	X-Date	Dividend (per Share)	Unit	Operation Period	Source of Dividend	Payment Date	Price	Div Yield	Par
TEAMG	07/05/2026	0.16	Baht	01/01/2025 - 31/12/2025	NP	29/05/2026	2.88	5.6%	0.5
TLI	07/05/2026	0.6	Baht	01/01/2025 - 31/12/2025	NP	-	10.40	5.8%	1
TOPP	07/05/2026	4.42	Baht	01/01/2025 - 31/12/2025	NP	28/05/2026	135.00	3.3%	10
TPCS	07/05/2026	0.7	Baht	01/01/2025 - 31/12/2025	NP	22/05/2026	10.40	6.7%	1
WACOAL	07/05/2026	0.55	Baht	-	RE	26/05/2026	17.30	3.2%	1
WP	07/05/2026	0.3	Baht	01/01/2025 - 31/12/2025	Both	22/05/2026	3.76	8.0%	1
AKR	08/05/2026	0.065	Baht	01/01/2025 - 31/12/2025	NP	22/05/2026	0.91	7.1%	0.8
ALLA	08/05/2026	0.1	Baht	01/01/2025 - 31/12/2025	NP	22/05/2026	1.24	8.1%	0.5
CSR	08/05/2026	2.03	Baht	01/01/2025 - 31/12/2025	NP	28/05/2026	69.50	2.9%	10
ETC	08/05/2026	0.048	Baht	01/01/2025 - 31/12/2025	NP	21/05/2026	0.69	7.0%	0.5
FE	08/05/2026	8.5	Baht	01/01/2025 - 31/12/2025	Both	26/05/2026	170.00	5.0%	10
GTB	08/05/2026	0.06	Baht	01/01/2025 - 31/12/2025	NP	28/05/2026	0.74	8.1%	0.25
HUMAN	08/05/2026	0.2	Baht	01/01/2025 - 31/12/2025	NP	28/05/2026	4.06	4.9%	0.5
PJW	08/05/2026	0.11	Baht	01/01/2025 - 31/12/2025	NP	25/05/2026	2.02	5.4%	0.5
SANKO	08/05/2026	0.04	Baht	01/01/2025 - 31/12/2025	NP	25/05/2026	0.81	4.9%	0.5
SMD100	08/05/2026	0.06242	Baht	01/01/2025 - 31/12/2025	NP	26/05/2026	1.73	3.6%	0.5
TMAN	08/05/2026	0.32	Baht	01/01/2025 - 31/12/2025	NP	26/05/2026	12.60	2.5%	0.75
TPAC	08/05/2026	0.438	Baht	01/01/2025 - 31/12/2025	NP	27/05/2026	9.00	4.9%	1
TRT	08/05/2026	0.14	Baht	01/01/2025 - 31/12/2025	NP	28/05/2026	3.96	3.5%	1
TRUE	08/05/2026	0.12	Baht	01/10/2025 - 31/12/2025	Both	26/05/2026	14.10	0.9%	4
AKP	11/05/2026	0.046	Baht	01/01/2025 - 31/12/2025	NP	22/05/2026	0.68	6.8%	0.5
ILM	11/05/2026	0.75	Baht	01/01/2025 - 31/12/2025	NP	22/05/2026	13.20	5.7%	5
KAMART	11/05/2026	0.11	Baht	01/01/2025 - 31/12/2025	NP	26/05/2026	8.25	1.3%	0.6
M	11/05/2026	0.5	Baht	01/01/2025 - 31/12/2025	Both	26/05/2026	18.90	2.6%	1
MRDIYT	11/05/2026	0.06	Baht	01/01/2025 - 31/12/2025	NP	27/05/2026	8.45	0.7%	0.5
ORI	11/05/2026	0.049	Baht	01/10/2025 - 31/12/2025	Both	28/05/2026	1.77	2.8%	0.5
PB	11/05/2026	0.79	Baht	01/07/2025 - 31/12/2025	Both	27/05/2026	48.00	1.6%	1
PPM	11/05/2026	0.05	Baht	01/01/2025 - 31/12/2025	NP	22/05/2026	1.30	3.8%	0.5
TFMAMA	11/05/2026	2.02	Baht	01/07/2025 - 31/12/2025	Both	20/05/2026	188.00	1.1%	1
TRP	11/05/2026	0.25	Baht	01/01/2025 - 31/12/2025	NP	27/05/2026	4.50	5.6%	0.5
TRU	11/05/2026	0.25	Baht	01/01/2025 - 31/12/2025	Both	25/05/2026	3.94	6.3%	1
UMI	11/05/2026	0.04	Baht	01/01/2025 - 31/12/2025	NP	28/05/2026	0.68	5.9%	1
WHA	11/05/2026	0.1438	Baht	01/01/2025 - 31/12/2025	Both	28/05/2026	4.18	3.4%	0.1
CM	12/05/2026	0.031	Baht	01/01/2025 - 31/12/2025	NP	28/05/2026	1.65	1.9%	1
LPGOLD13	12/05/2026	0.05602	Baht	-	-	03/08/2026	2.82	2.0%	-
PG	12/05/2026	0.5	Baht	-	RE	27/05/2026	6.70	7.5%	1
SENX	12/05/2026	0.0047	Baht	01/01/2025 - 31/12/2025	NP	22/05/2026	0.24	2.0%	0.5
SMO	12/05/2026	0.2	Baht	-	RE	29/05/2026	4.82	4.1%	1
BGC	13/05/2026	0.04	Baht	01/07/2025 - 31/12/2025	NP	27/05/2026	5.00	0.8%	5
K	13/05/2026	0.03	Baht	-	RE	28/05/2026	1.01	3.0%	0.5
SENA	13/05/2026	0.138295	Baht	01/01/2025 - 31/12/2025	NP	25/05/2026	1.87	7.4%	1
WINDOW	13/05/2026	0.03	Baht	01/01/2025 - 31/12/2025	NP	28/05/2026	0.77	3.9%	0.5
CHAO	14/05/2026	0.17	Baht	01/01/2025 - 31/12/2025	NP	29/05/2026	4.38	3.9%	1
ANTA13	15/05/2026	0.0262	Baht	-	-	24/06/2026	1.95	1.3%	-
BWG	15/05/2026	0.0075	Baht	01/01/2025 - 31/12/2025	NP	29/05/2026	0.32	2.3%	0.25
TENCENT01	15/05/2026	0.0431	Baht	-	-	24/06/2026	4.88	0.9%	-
TENCENT13	15/05/2026	0.04354	Baht	-	-	24/06/2026	4.28	1.0%	-
TENCENT19	15/05/2026	0.1084	Baht	-	-	30/06/2026	10.60	1.0%	-
TENCENT80	15/05/2026	0.21678	Baht	-	-	25/06/2026	21.30	1.0%	-
MSFT01	21/05/2026	0.0061	Baht	-	-	06/07/2026	3.58	0.2%	-
MSFT03	21/05/2026	0.00463	Baht	-	-	09/07/2026	2.44	0.2%	-
MSFT19	21/05/2026	0.0081	Baht	-	-	26/06/2026	4.06	0.2%	-
MSFT80	21/05/2026	0.01437	Baht	-	-	06/07/2026	6.10	0.2%	-
NONGFU80	21/05/2026	0.04635	Baht	-	-	11/09/2026	1.88	2.5%	-

Source: SET

Exhibit 26: Upcoming XD [8/8]

Symbol	X-Date	Dividend (per Share)	Unit	Operation Period	Source of Dividend	Payment Date	Price	Div Yield	Par
CHHONGQ19	22/05/2026	0.6791	Baht	-	-	06/07/2026	14.40	4.7%	-
AIA19	28/05/2026	0.0587	Baht	-	-	30/06/2026	3.64	1.6%	-
SP500US19	12/06/2026	0.0288	Baht	-	-	03/07/2026	12.70	0.2%	-
DISNEY19	30/06/2026	0.1027	Baht	-	-	07/08/2026	15.80	0.7%	-
UNIQLO80	28/08/2026	0.05475	Baht	-	-	01/12/2026	13.00	0.4%	-

Source: SET