

23 MARCH 2026

SPOTLIGHT ON THAILAND

Published Reports

- CP ALL (CPALL TB) - Inflationary winner; Maintain BUY TP THB60.00

Economics

- Tourism groups eye B15bn stimulus
- Plastic packaging at risk as war hits crucial raw material supplies
- Fuel panic spreads as pumps run dry
- Thailand Post trumpets EV fleet as fuel costs mount
- Coal units restarted to curb electricity costs
- Mideast conflict threatens Thai growth

Corporate News

- Central Retail combines 3 food companies

Indices	Index as of 20-Mar-26	Change -1D (%)	Change YTD (%)	Net Foreign YTD (USD m)
Thailand SET	1,433	1.1	13.8	732
China SHCOMP	3,957	(1.2)	(0.3)	
Hong Kong HSI	25,277	(0.9)	(1.4)	
India SENSEX	74,533	0.4	(12.5)	(10,543)
Indonesia JCI ++	7,107	1.2	(17.8)	(510)
Korea KOSPI	5,781	0.3	37.2	(24,064)
MY FBMKLCI +	1,721	(0.5)	2.4	
PH PCOMP +	6,019	(0.6)	(0.6)	211
SG FSSTI	4,949	(0.4)	6.5	
Taiwan TWSE	33,544	(0.4)	15.8	(11,722)
VN VNINDEX	1,648	(3.0)	(7.7)	(975)
MSCI Emerging	1,463	(0.9)	4.2	
Nikkei 225 +	53,373	(3.4)	6.0	
FTSE 100	9,918	(1.4)	(0.1)	
CAC 40	7,666	(1.8)	(5.9)	
DAX	22,380	(2.0)	(8.6)	
Dow Jones	45,577	(1.0)	(5.2)	
Nasdaq	21,648	(2.0)	(6.9)	
S&P 500	6,506	(1.5)	(5.0)	
Brent	112.19	0.2	84.7	
Dubai	97.62	(5.4)	59.8	
WTI	98.32	0.1	71.2	
GOLD	4,492.42	(0.3)	3.7	
Trade data	Buy	Sell	Net	Share (%)
(THB m)	(THB m)	(THB m)	(THB m)	(THB m)
Foreign	45,160	44,261	899	65
Retail	16,082	17,338	(1,257)	24
Prop Trade	3,913	3,610	303	5
Local Institution	3,450	3,395	55	5
Total Trade	68,604	68,604	0	100
Rates	Last close	1M ago	End last yr	1yr ago
	20/03/2026	20/02/2026	31/12/2025	20/03/2025
THB/USD	32.78	31.19	31.51	33.70
Inflation *	(0.88)	(0.66)	(0.28)	1.08
MLR **	6.38	6.47	6.47	6.88
1Y Fixed *	0.84	0.84	0.88	1.48
Govt bond 10Y	2.08	1.90	1.64	2.13
Commodity	Last close	1M ago	End last yr	1yr ago
(USD/bbl)	20/03/2026	20/02/2026	31/12/2025	20/03/2025
Brent	112.19	71.49	60.85	72.16
Dubai	97.62	70.10	61.08	70.89
WTI	98.23	66.31	57.42	68.28
Gold	4,492	5,227	4,319	3,011
Baltic Dry	2,056	2,112	1,877	1,643
(USD/ton)	20-Mar-26	13-Feb-26	19-Dec-25	21-Mar-25
Coal	140.35	115.92	110.10	87.02
% change	29.9	21.1	27.5	61.3

* chg y-y% last at end of most recent month end; ** Avg of 4 major banks;
Sources: Bloomberg, except coal from BANPU
+ as of 19 Mar, ++ as of 17 Mar

FSSIA Thailand Research

Jitra Amornthum License no. 014530, Head of Research | +66 2646 9966 | jitra.a@fssia.com
 Songklod Wongchai License no. 018086 | +66 2646 9970 | songklod.won@fssia.com
 Veeravat Virochpoka License no. 047077 | +66 2646 9965 | veeravat.v@fssia.com
 Usanee Liurut License no. 017928 | +66 2646 9758 | usanee.l@fssia.com
 Sureeporn Teewasuwet License no. 040694 | +66 2646 9972 | sureeporn.t@fssia.com
 Thanyatorn Songwutti License no. 101203 | +66 2646 9963 | thanyatorn.s@fssia.com
 Kampon Akaravarinchai License no. 115855 | +66 2646 9964 | kampon.a@fssia.com
 Vatcharut Vacharawongsith License no. 018301 | +66 2646 9969 | vatcharut.v@fssia.com
 Peemapon Nunthakunatip, RA

Thailand Equity Sales:

Manida Sithiseree | +66 2611 3590/91 | manida.s@fnsyros.com
 Chaiyon Rerkkriengkrai | +66 2611 3592/93 | chaiyon.r@fnsyros.com
 Napaporn Klongvanitchakij | +66 2611 3582/83 | napaporn.k@fnsyros.com
 Rattana Detphattharakoson | +66 2611 3580/71 | rattana.d@fnsyros.com
 Siriluk Kiatkosolkul | +66 2611 3584/85 | siriluk.k@fnsyros.com

Thailand Equity Trading:

DISCLAIMER: Some directors and management of Finansia Syrus Securities Public Co., Ltd. also serve as a director and management of AEONTS, BAFS, BCPG, BE8, DV8, EA, FPT, FSX, KDH, SVI, VNG, WP, XO.

Finansia Syrus Securities Public Company Limited and FSS International Investment Advisory Securities Company Limited are subsidiaries of Finansia X Public Company Limited, with shared directors or executives.

THIS UNEDITED REPORT IS PREPARED UNDER TIME CONSTRAINT BY FSS INTERNATIONAL INVESTMENT ADVISORY SECURITIES CO., LTD. (FSSIA). ALL VIEWS EXPRESSED IN THIS REPORT ACCURATELY REFLECT THE PERSONAL VIEW OF THE ANALYST(S) WITH REGARD TO ANY AND ALL OF THE SUBJECT SECURITIES, COMPANIES OR ISSUERS MENTIONED IN THIS REPORT; AND (II) NO PART OF THE COMPENSATION OF THE ANALYST(S) WAS, IS, OR WILL BE, DIRECTLY OR INDIRECTLY, RELATED TO THE SPECIFIC RECOMMENDATIONS OR VIEWS EXPRESSED HEREIN. The information herein has been obtained from sources believed to be reliable and accurate; however FSSIA makes no representation as to the accuracy and completeness of such information. Information and opinions expressed herein are subject to change without notice. FSSIA has no intention to solicit investors to buy or sell any security in this report.

Published Reports

CP ALL (CPALL TB) - Inflationary winner; Maintain BUY TP THB60.00

Limited risk to 2026's estimation

We foresee that the market was overly concerned on CPALL as a proxy of domestic consumption. However, we expect CPALL to be a relative winner in an inflationary environment from strong bargaining power. The impact from ME war can be broken into two dimensions. Firstly, The operating cost pressure from higher logistic costs, fuel, and electricity. Secondly, CPRAM margin pressure from higher packaging material costs. Our worst-case analysis, assuming no strategic adjustments, implies a 7% downside to 2026 NPAT, based on higher packaging costs, diesel of THB35/litre, and FT rate of THB4.50/unit from May - Dec 2026.

Potential long-term upside on the profitability

We expect the packaging material shortages risk to remain limited as the company has a long-term contract with suppliers. Although we foresee the risk from cost push environment, we expect the company will be able to mitigate the impact and even benefit in longer-term from cost management, pass through higher costs via ASPs which should support by: 1) the strong daily traffic of 15m/day, reinforcing 7-11 as a top destination for customers, and 2) a significantly cheaper meal price of THB40-60 vs THB60+ at street food vendors. Also, the company can benefit from the launching of new NPD to better serve with customers demand as we have seen in 2022-23.

1Q26 earnings growth to remain resilient

We expect 1Q26 QTD SSS to grow by around 2% y-y, supported by favorable weather and continued positive feedback from new product launches. Makro's SSS should turn slightly positive, while Lotus' SSS remains negative. We preliminarily forecast CPALL's 1Q26 earnings growth at 5–10% y-y, driven by SSS recovery, ongoing y-y GPM expansion, and easing earnings pressure from Lotus. We maintain our 2026 earnings growth forecast of 5.5% y-y.

Maintain BUY with a target price of THB60/share

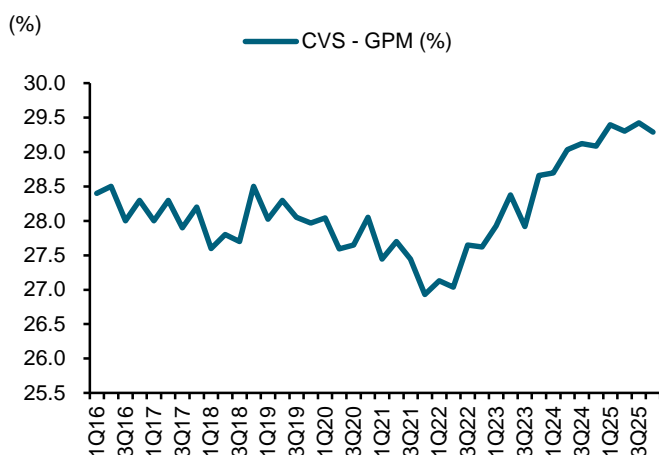
The share price dropped by 12% since the beginning of the war while the worst case impact is expected at only 7% to 2026's NPAT. Currently, the stock is now trading at 13.7x 2026E P/E, slightly lower to the sector. We maintain BUY with a target price of THB60.

Exhibit 1: Sensitivity analysis on logistics, packaging, and FT rate

Company	Increase in logistics and packaging per month	Impact to 2026's core earnings (%)
CPALL	+10% Packaging cost, Diesel of THB+3/litre (+10% from THB33)	-0.4%
FT rate (THB/unit/month)		Impact to 2026's core earnings (%)
CPALL	0.1	-0.09%

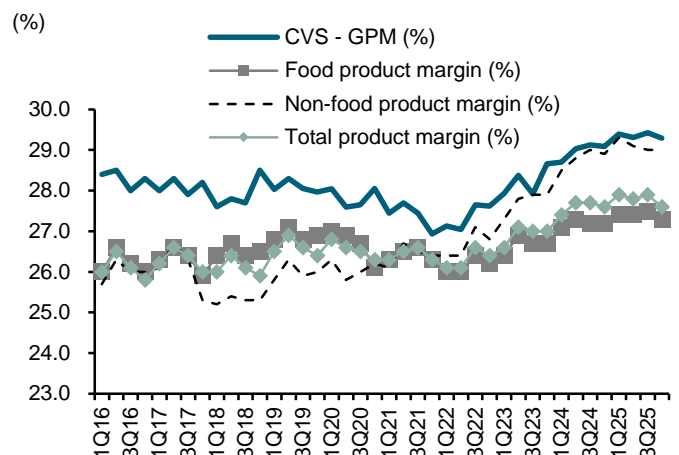
Sources: CPALL; FSSIA's estimates

Exhibit 2: CVS business GPM by quarter



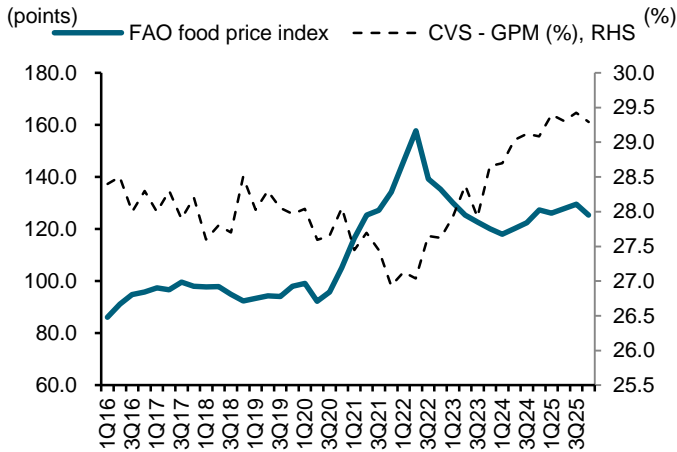
Sources: CPALL; FSSIA estimates

Exhibit 3: CVS and product GPM



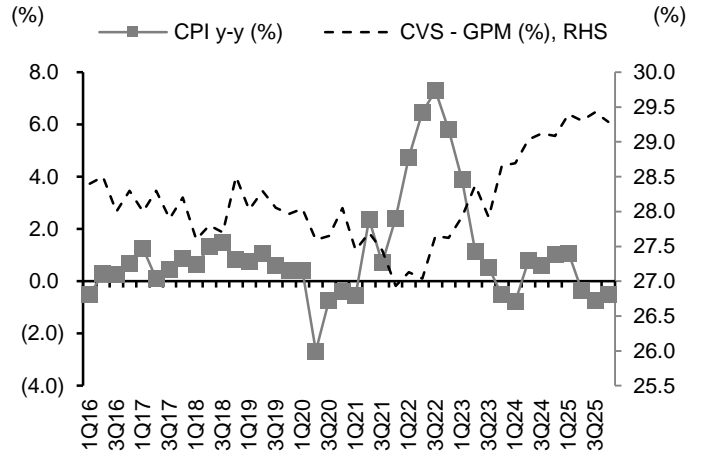
Sources: CPALL; FSSIA estimates

Exhibit 4: Food price index and CVS GPM



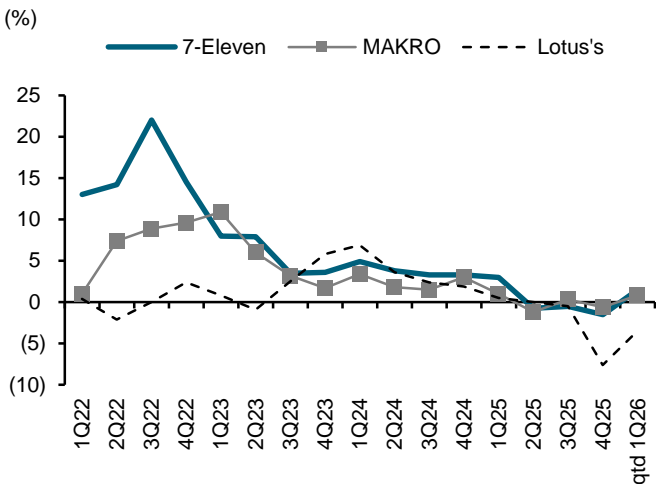
Sources: UN; FSSIA estimates

Exhibit 5: CPI y-y and CVS GPM



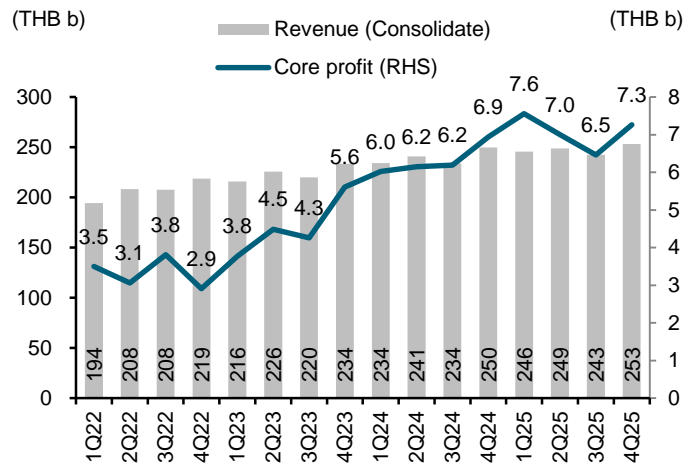
Sources: CPALL; FSSIA estimates

Exhibit 6: SSS momentum by quarter



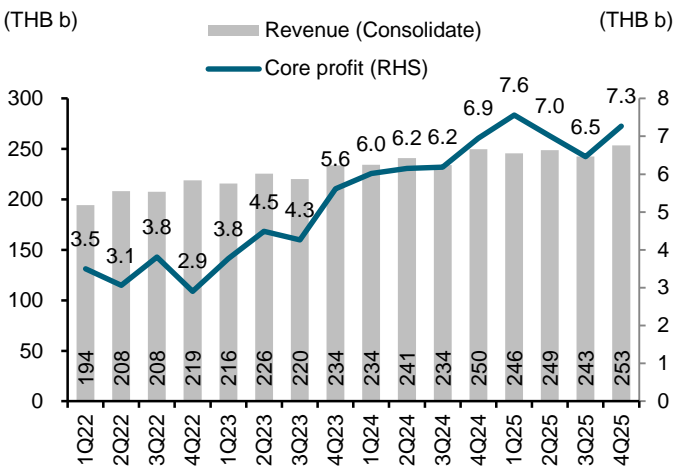
Sources: CPALL; FSSIA estimates

Exhibit 7: Revenue and net profit by quarter



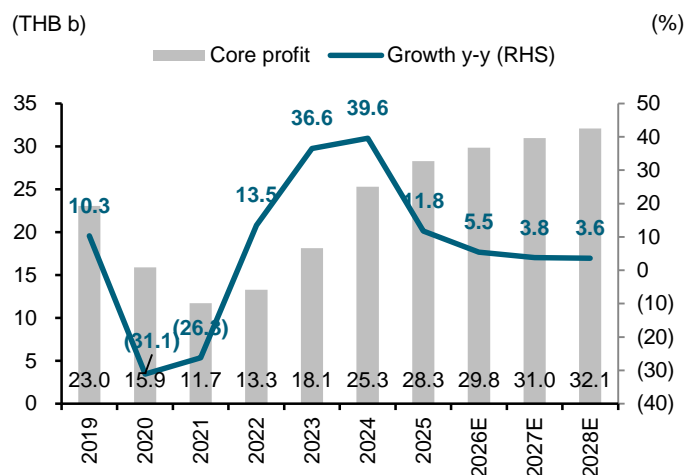
Sources: CPALL; FSSIA estimates

Exhibit 8: Revenue and core profit momentum by quarter



Sources: CPALL; FSSIA estimates

Exhibit 9: Core profit and growth by year



Sources: CPALL; FSSIA estimates

Economic news

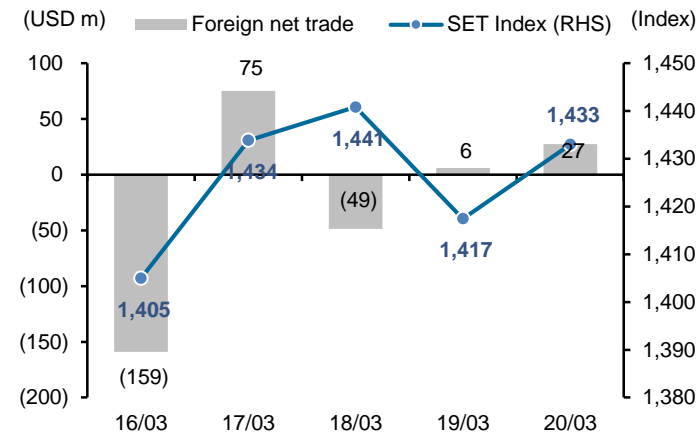
- [**Tourism groups eye B15bn stimulus**](#) BANGKOK POST: Seven tourism associations under the Federation of Thai Tourism Associations (Fetta) have called for stimulus projects worth a combined 15 billion baht, including cash handouts to local tourists, to prevent an industry downturn due to the Gulf war. Adith Chairattananon, honorary secretary-general of the Association of Thai Travel Agents (Atta), said cancellation rates ballooned during three weeks of strikes in the Middle East, while new bookings for April slowed, including from Chinese travellers. Visitors from the mainland recorded promising signs the first two months of the year, but forward bookings have faded to 60% of available seats in April. During an emergency war room meeting yesterday with the Tourism Authority of Thailand (TAT), Atta and six other associations including the Thai Hotels Association, the Thai Travel Agents Association and the Thai Transportation Operators Association submitted a proposal to the TAT urging the new government to include stimulus projects in its policy statement, which is scheduled to be delivered to parliament soon. Mr Adith said to restore confidence among domestic travellers, who are reluctant to hit the road due to fuel shortages, cash handouts should help to encourage them. He said a cross-provincial travel project with a budget of 3 billion baht for 1 million privileges should be launched to stimulate local spending across many provinces. Under this scheme, registered tourists would be eligible to receive a cash handout of 1,000 baht for a two-day, one-night trip visiting at least one province; 2,000 baht for a three-day, two-night trip in two provinces; and 3,000 baht for a four-day, three-night trip in three provinces. To remove technical obstacles and implement the project quickly, Mr Adith urged the government to use existing mechanisms such as the Pao Tang app instead of creating a new platform. To spur tourism income via bus tours, which could help travellers save on energy costs, Fetta proposed "One Hundred Tour Buses Around Thailand", covering cross-regional trips to visit local communities. Each bus should contain at least 20 travellers on a minimum three-day, two-night cross-regional trip to receive budget support of 10,000 baht per bus. This project aims to attract at least 1 million travellers, both domestic and international, under a total budget of 10 billion baht. Other stimulus measures include cost relief for the aviation industry, such as a 350,000-baht subsidy for each charter flight, similar to last year's "Summer Blast" scheme. Mr Adith said this project could partly operate using the 1-billion-baht budget from the previous programme to maintain tourism demand in target markets, particularly tourists from new Chinese cities that have never visited Thailand before.
- [**Plastic packaging at risk as war hits crucial raw material supplies**](#) BANGKOK POST: Packaging may be the next industry to bear the brunt of petrochemical supply disruptions if the Israel-US war on Iran does not abate, says Veera Kwanloetchit, a director of the Public Private Partnership for Sustainable Plastic and Waste Management. The prices of petroleum-derived plastic feedstocks, notably polyethylene, polypropylene and low-density polyethylene, have soared by 30-40%, pressuring the production costs of packaging products, said Mr Veera. These types of plastics are key raw materials in the packaging industry, especially food and beverage packaging such as cling wrap and bottles. Products such as shampoo and shower cream also use plastic packaging. "The manufacturer of Mama instant noodles reduced production partly because packaging materials are becoming scarce," he said. Consumers who buy products that require plastic packaging will pay more as prices increase as a result of higher raw material costs, said Mr Veera. In the worst-case scenario, if packaging manufacturers cannot secure plastic feedstocks, the production of consumer products will be severely affected, he said.
- [**Fuel panic spreads as pumps run dry**](#) BANGKOK POST: Long queues at petrol stations across Thailand and "out of fuel" signs for diesel, the backbone of the transport sector, have raised public concern over the past week about the country's ability to manage energy reserves. The situation also highlighted what appears to be weak crisis communication, which helped fuel unnecessary panic. This contrasts with many other countries that did not experience widespread fuel hoarding during the same period. As the new government takes shape, businesses are looking for clear measures to tackle looming energy challenges, especially as developments in the Middle East have weighed on Thailand's transport and energy sectors for weeks.
- [**Thailand Post trumpets EV fleet as fuel costs mount**](#) BANGKOK POST: State-run logistics provider Thailand Post is emphasising replacement of petrol-powered vehicles with electric vehicles (EVs) for its last-mile delivery fleet to deal with volatile fuel prices. The war in the Middle East is roiling the oil market in Thailand. Oil accounts for 30% of Thailand Post's operational costs. This year the company wants to convert more than 100 delivery motorcycles to electric motorcycles. Roughly 10% of its delivery pickups are EVs. "We are replacing motorcycles and pickups used for last-mile delivery with EVs," said president Dhanant Subhadrabandhu. The state agency has used EVs in its fleet for years, but this year marks the start of a more serious transition due to the ongoing oil crisis, he said. For motorcycles, the company has been testing and considering electric models and brands for some time to ensure they are suitable for delivery purposes, said Mr Dhanant. He acknowledged it could be difficult to replace all of its large trucks with electric trucks, given limited availability of large models in the country.
- [**Coal units restarted to curb electricity costs**](#) BANGKOK POST: The Energy Regulatory Commission (ERC) has ordered the restart of two decommissioned units at the Mae Moh coal-fired power plant in a bid to contain rising electricity bills. ERC secretary-general Poonpat Leesombatpiboon said the commission's board resolved that state-run Electricity Generating Authority of Thailand (Egat) should bring units 9 and 10 back online. Together, the two units can generate 600 megawatts of electricity, which will be added to Mae Moh's current total capacity of 700MW. Coal, though controversial, remains significantly cheaper than liquefied natural gas (LNG), which accounts for about 60% of Thailand's power generation. Spot LNG prices in Asia have surged to US\$24-25 per million British thermal units as of yesterday, nearly double last year's average of \$12-13, driven largely by supply disruptions linked to Middle East tensions. Mr Poonpat said Egat will monitor maintenance to ensure continuous operation and minimise unscheduled shutdowns. The move is expected to offset soaring LNG costs and help the government maintain electricity tariffs at 3.88 baht per unit for the May–August billing period. Caretaker energy minister Auttapol Rerkpiboon acknowledged that natural gas costs have risen sharply, but stressed the government is committed to keeping electricity rates at current levels.

- **[Mideast conflict threatens Thai growth](#)** BANGKOK POST: The Bank of Thailand is warning the war in the Middle East could weigh on Thailand's economy across multiple fronts, potentially dragging GDP growth below its 2% forecast for this year. The conflict has heightened downside risks, with impacts expected through several channels, including energy prices, financial market volatility, and broader economic activity, said Chayawadee Chai-anant, assistant governor for corporate relations at the central bank. Although the impact has yet to be reflected in economic data, given the typical lag in economic transmission, the conflict has already driven a surge in oil prices, raising production and transport costs across many sectors. Under a baseline scenario, the regulator assumes the conflict will subside in the first half of the year. However, its economic repercussions are likely to extend into the second half, particularly due to damage to energy infrastructure, which would prolong the recovery process, she said. In this scenario, average oil prices could climb to around US\$100 per barrel, while shipping disruptions may persist well into the latter half of the year. "The impact on Thai GDP is unavoidable and represents a downside risk to the previous forecast of 2%," Ms Chayawadee said, adding the bank is scheduled to review its economic outlook and growth projections in April, taking all relevant factors into account.

Corporate news

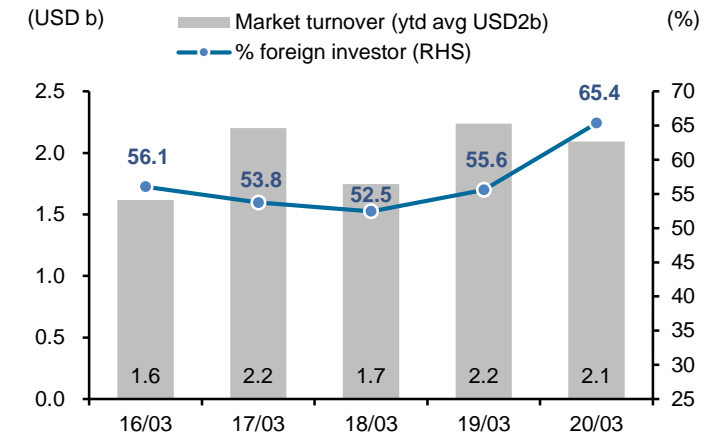
- **[Central Retail combines 3 food companies](#)** BANGKOK POST: Central Retail Corporation Plc (CRC) has integrated its retail and wholesale businesses across Thailand and Vietnam, appointing Stephane Coum as chief executive to oversee the entire food business portfolio. The company has united its three flagship food business units -- Central Food Retail Co Ltd (CFR), Central Food Wholesale Co Ltd, and Central Retail Vietnam -- under the Central Retail Food Group. This strategic restructuring began on March 1. Suthisarn Chirathivat, chief executive of CRC, said the food business is a vital growth engine for the company, consistently driving gains across retail and wholesale formats in both Thailand and Vietnam. "The integration aims to strengthen the management structure and sharpen the strategic focus on the food business, while identifying untapped market opportunities to expand reach across all consumer segments. The effort leverages synergies in expertise, data, and shared resources to drive maximum efficiency," he said. The company appointed Mr Coum to lead this group and drive CRC's food business towards sustainable growth. Mr Coum, chief executive of Central Retail Food Group, said the company will harness the strengths of each business, from Tops' retail expertise and Go Wholesale's strong position in the wholesale market to Central Retail Vietnam's rapidly expanding network and growth opportunities. The goal is to integrate them to create a fully comprehensive and seamlessly connected regional food system, he said.

Exhibit 10: Foreign fund flow and SET Index



Source: Bloomberg

Exhibit 11: Foreign participation



Source: Bloomberg

Exhibit 12: Index performance

	SET Index		Index performance (% change)									
	Index	(%chg)	Energy	Bank	Comu	Commerce	Food	Property	Construct	Transport	Petrochem	
% of SET Index			19%	13%	11%	6%	4%	4%	2%	7%	2%	
Current	1,432.99	1.1	1.0	0.9	1.4	2.0	1.5	1.1	1.7	2.2	(0.8)	
-5D	1,409.35	1.7	1.2	0.3	4.0	(2.7)	2.1	(1.1)	2.9	0.2	14.7	
-1M	1,479.71	(3.2)	(5.2)	(3.6)	(1.1)	(12.5)	(6.8)	(6.6)	(13.8)	(12.0)	8.6	
-3M	1,252.19	14.4	18.5	5.7	20.6	1.2	(2.0)	8.1	0.5	(10.7)	49.1	
-6M	1,292.72	10.9	10.9	18.4	23.5	(15.0)	(11.2)	(0.2)	(14.6)	(7.8)	7.5	
-1Y	1,181.71	21.3	17.5	19.5	31.3	(21.3)	(10.8)	(1.7)	1.7	(7.4)	27.4	
WTD	1,409.35	1.7	1.2	0.3	4.0	(2.7)	2.1	(1.1)	2.9	0.2	14.7	
MTD	1,528.26	(6.2)	(5.5)	(3.6)	(2.5)	(11.2)	(6.6)	(9.5)	(14.9)	(10.2)	6.6	
QTD	1,259.67	13.8	16.5	5.1	19.0	1.2	(1.8)	7.9	0.1	(5.8)	41.9	
End of last year	1,259.67	13.8	16.5	5.1	19.0	1.2	(1.8)	7.9	0.1	(5.8)	41.9	

Source: Bloomberg

Exhibit 13: Trade by investor types

	SET Index		Exchange rate (USD:THB)	SET Index		Equity trading / Net position				Bond Net foreign (USD m)
	Index	Change (y-y%)		Average daily turnover (THB m)	(USD m)	Foreign (USD m)	Retail (USD m)	PropTrade (USD m)	Local Inst (USD m)	
2020	1,449.35	(8.3)	31.29	67,335	2,152	(8,287)	6,873	459	953	(1,005)
2021	1,657.62	14.4	32.00	88,443	2,764	(1,632)	3,630	435	(2,330)	6,550
2022	1,668.66	15.1	34.78	53,589	1,541	5,362	(656)	56	(4,758)	4,111
2023	1,415.85	(15.2)	34.81	51,072	1,467	(5,507)	3,348	(146)	2,305	318
2024	1,400.21	(1.1)	35.26	45,039	1,277	(4,132)	2,680	7	1,443	(615)
2025	1,259.67	(10.0)	32.88	40,477	1,231	(3,210)	4,783	(411)	(1,158)	2,340
2026YTD	1,432.99	13.8	32.88	64,698	1,968	705	607	15	(1,354)	589
1Q25	1,158.09	(16.0)	33.95	42,528	1,253	(1,172)	1,625	(297)	(157)	405
2Q25	1,089.56	(16.2)	33.09	40,328	1,219	(1,165)	1,603	(77)	(358)	1,051
3Q25	1,274.17	(12.1)	32.30	44,797	1,387	(544)	351	(161)	354	14
4Q25	1,259.67	(10.0)	32.16	34,634	1,077	(331)	1,204	123	(997)	876
1Q26	1,432.99	23.7	31.53	66,217	2,100	705	607	15	(1,354)	589
Jul-25	1,242.35	(5.9)	32.44	42,053	1,296	499	(615)	(35)	151	(60)
Aug-25	1,236.61	(9.0)	32.46	49,877	1,537	(670)	564	(15)	120	(145)
Sep-25	1,274.17	(12.1)	32.00	42,462	1,327	(373)	402	(111)	83	219
Oct-25	1,309.50	(10.7)	32.56	38,900	1,195	(136)	414	126	(404)	618
Nov-25	1,256.69	(12.0)	32.39	33,847	1,045	(386)	646	23	(283)	513
Dec-25	1,259.67	(10.0)	31.54	31,156	988	191	144	(25)	(310)	(255)
Jan-26	1,325.62	0.8	31.28	46,231	1,478	141	511	296	(947)	1,429
Feb-26	1,528.26	27.0	31.24	72,529	2,321	1,743	(1,484)	237	(496)	352
Mar-26	1,432.99	23.7	32.06	79,890	2,492	(1,179)	1,581	(518)	89	(1,192)
2026YTD	1,432.99	13.8	32.88	64,698	1,968	705	607	15	(1,354)	589
16/3/2026	1,405.02		32.51	52,543	1,616	(159)	151	(3)	11	(31)
17/3/2026	1,433.88		32.36	71,255	2,202	75	(164)	18	72	(59)
18/3/2026	1,440.85		32.37	56,571	1,748	(49)	47	(10)	11	80
19/3/2026	1,417.45		32.79	73,427	2,240	6	103	(28)	(81)	(131)
20/3/2026	1,432.99		32.78	68,604	2,093	27	(38)	9	2	(44)

Source: Bloomberg

Exhibit 14: Upcoming events

Date Time	Event	Period	Survey	Actual	Prior
3/20/2026 3:30	Gross International Reserves	13-Mar	--	\$284.4b	\$288.3b
3/20/2026 3:30	Forward Contracts	13-Mar	--	\$22.3b	\$22.7b
3/23/2026 22:30	Customs Exports YoY	Feb	16.90%	--	24.40%
3/23/2026 22:30	Customs Imports YoY	Feb	26.50%	--	29.40%
3/23/2026 22:30	Customs Trade Balance	Feb	\$1000m	--	-\$3300m
3/23/2026 23:30	Car Sales	Feb	--	--	73936
3/26/2026-3/29/2026	Mfg Production Index ISIC NSA YoY	Feb	2.30%	--	1.46%
3/26/2026-3/29/2026	Capacity Utilization ISIC	Feb	--	--	60.07
3/27/2026 3:30	Gross International Reserves	20-Mar	--	--	\$284.4b
3/27/2026 3:30	Forward Contracts	20-Mar	--	--	\$22.3b
3/31/2026 3:00	BoP Current Account Balance	Feb	--	--	\$700m
3/31/2026 3:30	Exports YoY	Feb	--	--	23.60%
3/31/2026 3:30	Exports	Feb	--	--	\$31050m
3/31/2026 3:30	Imports YoY	Feb	--	--	30.10%
3/31/2026 3:30	Imports	Feb	--	--	\$31791m
3/31/2026 3:30	Trade Balance	Feb	--	--	-\$741m
3/31/2026 3:30	BoP Overall Balance	Feb	--	--	\$2193m
3/31/2026 20:30	S&P Global Thailand PMI Mfg	Mar	--	--	53.5
4/01/2026 3:30	Business Sentiment Index	Mar	--	--	49.6
4/06/2026 23:30	CPI YoY	Mar	--	--	-0.88%
4/06/2026 23:30	CPI NSA MoM	Mar	--	--	-0.24%
4/06/2026 23:30	CPI Core YoY	Mar	--	--	0.56%
4/06/2026-4/16/2026	Consumer Confidence	Mar	--	--	53.7
4/06/2026-4/16/2026	Consumer Confidence Economic	Mar	--	--	47.3

Source: Bloomberg

Exhibit 15: Upcoming XR

Symbol	X-Date	Announce Date	Rights for	Subscription Price	Unit	Subscription Ratio (Holding:New)	Subscription Period	Allotted Shares (Shares)
STOWER	23/3/2026	18/2/2026	Common	0.015	Baht	1 : 9.84645	06/05/2026 - 22/05/2026	40000000000
VS	31/3/2026	16/3/2026	Common	0.3	Baht	1 : 1	25/05/2026 - 29/05/2026	250000000
NKI	29/4/2026	26/2/2026	Common	15	Baht	3.16667 : 1	20/05/2026 - 26/05/2026	12000000
PANEL	29/4/2026	24/2/2026	Warrants	-	Baht	4 : 1	-	47500000
PANEL	29/4/2026	24/2/2026	Warrants	-	Baht	8 : 1	-	23750000
IVF	7/5/2026	27/2/2026	Warrants	-	Baht	3.2 : 1	-	137500000
CIG	8/5/2026	2/3/2026	Common	0.03	Baht	1 : 2	26/05/2026 - 02/06/2026	7473155398
BC	19/6/2026	27/2/2026	Warrants	-	Baht	10 : 1	-	60537945

Source: SET

Exhibit 16: New securities

Derivative Warrants	Trade Date	Underlying	Issuer	DW Type	Market	Maturity Date	Exercise Price (Baht)
AOT19C2608A	23/3/2026	AOT	YUANTA	Call	SET	14/8/2026	64.75
BA13C2608A	23/3/2026	BA	KGI	Call	SET	12/8/2026	18
CENTEL13C2608B	23/3/2026	CENTEL	KGI	Call	SET	12/8/2026	42
IRPC13C2608B	23/3/2026	IRPC	KGI	Call	SET	12/8/2026	2.3
MINT13C2608B	23/3/2026	MINT	KGI	Call	SET	12/8/2026	29.25
SPX28C2606B	23/3/2026	SPX	MACQ	Call	SET	24/6/2026	7,000.00
STGT19C2609A	23/3/2026	STGT	YUANTA	Call	SET	10/9/2026	12.5

Source: SET

Exhibit 17: Management trading

Company	Management	Securities	Transaction	Shares	Price (THB)	Action	Value (THBm)
Carabao Group (CBG)	Sathien Sathientham	Common Shares	3/19/2026	350,000	35.98	Buy	12.59
Kingsmen C.M.T.I. (K)	Supattra Ongkaew	Common Shares	3/18/2026	66,900	1.00	Sell	0.07
Kingsmen C.M.T.I. (K)	Supattra Ongkaew	Common Shares	3/19/2026	31,100	1.00	Sell	0.03
Kingsmen C.M.T.I. (K)	Chayawat Pisessith	Common Shares	3/19/2026	16,420	1.00	Buy	0.02
KCG Corporation (KCG)	Songtham Phianpattanawit	Common Shares	3/19/2026	5,000	9.50	Buy	0.05
CP Aextra (CPAXT)	Suphachai Chearavanont	Common Shares	3/17/2026	13,000	15.52	Buy	0.20
CP Aextra (CPAXT)	Suphachai Chearavanont	Common Shares	3/19/2026	10,000	15.00	Buy	0.15
Aim Industrial Growth Reit (AIMIRT)	Amorn Chulaluksananukul	Warrant	3/19/2026	10,000	10.80	Sell	0.11
Triple I Logistics (III)	Kirrk-Krai Jirapaet	Common Shares	3/16/2026	50,000	3.94	Buy	0.20
True Corp (TRUE)	Mr Sigve Brekke	Common Shares	3/18/2026	800,000	14.00	Buy	11.20
T.A.C. CONSUMER (TACC)	Chatchawe Vatanasuk	Common Shares	3/17/2026	547,900	5.50	Sell	3.01
T.A.C. CONSUMER (TACC)	Chatchawe Vatanasuk	Common Shares	3/18/2026	568,100	5.49	Sell	3.12
Thai Mui Corporation (THMUI)	Tchakorn Leelaprachakul	Common Shares	3/19/2026	100	0.32	Buy	0.00
General Environment Conservati (GENCO)	Nantakarn Thongprapan	Common Shares	3/19/2026	350,000*	0.27	Buy	0.09
General Environment Conservati (GENCO)	Nantakarn Thongprapan	Common Shares	3/19/2026	350,000	0.28	Buy	0.10
Bangkok Chain Hospital (BCH)	Kantaporn Harnphanich	Common Shares	3/19/2026	151,000	9.93	Buy	1.50
Bangkok Ranch (BR)	Rosanna Suchaovanich	Common Shares	3/19/2026	2,769,200	1.75	Buy	4.85
Bangchak Petroleum (BCP)	Police General Samran Nualma	Common Shares	3/19/2026	100,000	39.50	Sell	3.95
Precious Shipping (PSL)	Narit Likkasitiphon	Common Shares	3/19/2026	100,000	6.82	Buy	0.68
Pan Asia Footwear (PAF)	Sommat Khunset	Common Shares	3/19/2026	58,500	0.66	Buy	0.04
Food Moments (FM)	Phaksarath Sirawisetsorn	Common Shares	3/19/2026	258,400	4.05	Buy	1.05
Food Moments (FM)	Phaksarath Sirawisetsorn	Common Shares	3/19/2026	100,000	4.02	Sell	0.40
Food Moments (FM)	Sumate Masileerungsri	Common Shares	3/19/2026	54,000	4.01	Buy	0.22
Food Moments (FM)	Sumate Masileerungsri	Common Shares	3/19/2026	11,000	4.11	Sell	0.05
Firetrade Engineering (FTE)	Taksin Tantipijit	Common Shares	3/19/2026	50,000	2.00	Buy	0.10
Mitsib Leasing (MITSIB)	Nitipat Yongsanguanchai	Common Shares	3/19/2026	70,000	0.55	Sell	0.04
Medeze Group (MEDEZE)	Veerapol Khemarangsarn	Common Shares	3/16/2026	100,000	6.20	Buy	0.62
Medeze Group (MEDEZE)	Veerapol Khemarangsarn	Common Shares	3/19/2026	31,300	6.15	Buy	0.19
Masstec Link (MASTEC)	Dussadee Meechai	Common Shares	3/19/2026	210,000	1.18	Buy	0.25
Masstec Link (MASTEC)	Dussadee Meechai	Common Shares	3/19/2026	150,000	1.19	Buy	0.18
Rhom Bkho Property (TITLE)	Kitjapong Wathisoonthorn	Common Shares	3/19/2026	10,000	7.83	Buy	0.08
Rhom Bkho Property (TITLE)	Darong Hutajuta	Common Shares	3/19/2026	90,000	7.85	Buy	0.71
JSP Pharmaceutical Manufacturing (Thailand) (JSP)	Jirada Daengprasert	Common Shares	3/18/2026	10,200	1.96	Buy	0.02
Nonthavej Hospital (NTV)	Piyasil Chanpoo	Common Shares	3/19/2026	1,200	22.10	Buy	0.03
Ratchaphruek Hospital (RPH)	Jiraporn Srinakaran	Common Shares	3/18/2026	4,000	4.94	Buy	0.02
Intermedical Care and Lab Hospital (IMH)	Sittiwat Kamkatwong	Common Shares	3/19/2026	36,400	3.02	Buy	0.11
Laundry You (WASH)	Gunpong Panthongprasert	Common Shares	3/18/2026	60,000	5.50	Sell	0.33
World Flex (WFX)	Chalongkwan Wongsasuthikul	Common Shares	3/19/2026	70,000	1.12	Buy	0.08
World Flex (WFX)	Chalongkwan Wongsasuthikul	Common Shares	3/19/2026	150,000	1.13	Buy	0.17
World Flex (WFX)	Chalongkwan Wongsasuthikul	Common Shares	3/19/2026	20,000	1.14	Buy	0.02
World Flex (WFX)	Chalongkwan Wongsasuthikul	Common Shares	3/20/2026	10,000	1.14	Buy	0.01
World Flex (WFX)	Chalongkwan Wongsasuthikul	Common Shares	3/20/2026	4,300	1.15	Buy	0.00
World Flex (WFX)	Chawalit Tiyadechachai	Common Shares	3/19/2026	100,000	1.12	Buy	0.11
Wice Logistics (WICE)	Patadon Kongsoonthorn	Common Shares	3/19/2026	20,000	2.50	Buy	0.05
Wice Logistics (WICE)	Patadon Kongsoonthorn	Common Shares	3/19/2026	20,000	2.52	Buy	0.05
Sikarin (SKR)	Suriyan Kojonroj	Common Shares	3/19/2026	70,000	6.80	Buy	0.48
Sikarin (SKR)	Atirat Charoonsri	Common Shares	3/19/2026	200,000	6.85	Buy	1.37
Skin Laboratory (SKIN)	Tippawan Khantalee	Common Shares	3/19/2026	100	1.15	Buy	0.00
Star Money (STARM)	Nichanun Lawansathian	Common Shares	3/19/2026	213,000	0.91	Buy	0.19
Siamrajathanee (SO)	Kanthima Jangwansook	Common Shares	3/19/2026	30,400	4.32	Buy	0.13
Saha Pathana Inter-Holding (SPI)	Samrerng Manoonpol	Common Shares	3/19/2026	20,700	43.42	Buy	0.90
Haad Thip (HTC)	Pariya Chirabandhu	Common Shares	3/19/2026	14,300	15.51	Buy	0.22
R&B Food Supply (RBF)	Petchara Ratanapoompinyo	Common Shares	3/19/2026	1,056,000	3.56	Buy	3.76
Indigy (IDG)	Worapan Chuacharoensiri	Common Shares	3/10/2026	20,000	1.56	Buy	0.03
Indigy (IDG)	Worapan Chuacharoensiri	Common Shares	3/10/2026	60,000	1.57	Buy	0.09
Indigy (IDG)	Worapan Chuacharoensiri	Common Shares	3/16/2026	20,000	1.47	Buy	0.03
Interroyal Engineering (IROYAL)	Panapat Mekasuwandumrong	Common Shares	3/19/2026	60,000	5.80	Buy	0.35
Interroyal Engineering (IROYAL)	Panapat Mekasuwandumrong	Warrant	3/19/2026	30,000	1.55	Buy	0.05
Eastern Power Group (EP)	Yuth Chinpakkul	Common Shares	3/19/2026	300	1.16	Buy	0.00
Thai Coating Industrial (TCOAT)	Lertchai Charoenapornwatana	Common Shares	3/18/2026	1,000	26.00	Buy	0.03
X Bioscience (XBIO)	Nottapol Thipchatchawanwong	Common Shares	3/18/2026	2,837,853	0.04	Buy	0.11
S&P Syndicate (SNP)	Maneesuda Silaon	Common Shares	3/19/2026	2,500	9.10	Buy	0.02
S.C.L. Motor Part (SCL)	Sakol Tangkosul	Common Shares	3/19/2026	200,000	1.15	Buy	0.23
AMR Asia (AMR)	Natthachai Siriko	Common Shares	3/19/2026	58,000	0.33	Buy	0.02
ALT Telecom (ALT)	Preeyaporn Tangpaosak	Common Shares	3/18/2026	3,753,000	1.09	Sell	4.09
ALT Telecom (ALT)	Preeyaporn Bhuwakul	Common Shares	3/18/2026	3,753,000	1.09	Sell	4.09
Asset Wise (ASW)	Kromchet Vipapong	Common Shares	3/19/2026	55,800	7.33	Buy	0.41

Source: *Revoked by Reporter; SEC

Exhibit 18: Upcoming XM [1/2]

Symbol	X-Date	Meeting Date	Agenda
BJC	23/3/2026	22/4/2026	Cash dividend payment,Acquisition and disposition of assets / Acquisition or Disposition of Assets ,Connected transaction,Changing The director(s)
HPF	23/3/2026	-	Fund management,Financial position and performance,Appointment of auditors and audit costs
KCE	23/3/2026	22/4/2026	Cash dividend payment,Changing The director(s)
KLINIQ	23/3/2026	23/4/2026	Cash dividend payment,Changing The director(s)
MII	23/3/2026	-	Fund management,Financial position and performance,Appointment of auditors and audit costs
MNIT	23/3/2026	-	Fund management,Financial position and performance,Appointment of auditors and audit costs
MNIT2	23/3/2026	-	Fund management,Financial position and performance,Appointment of auditors and audit costs
MNRF	23/3/2026	-	Fund management,Financial position and performance,Appointment of auditors and audit costs
M-PAT	23/3/2026	-	Fund management,Financial position and performance,Appointment of auditors and audit costs
M-STOR	23/3/2026	-	Fund management,Financial position and performance,Appointment of auditors and audit costs
NNCL	23/3/2026	28/4/2026	Cash dividend payment,Changing The director(s)
ROCK	23/3/2026	27/4/2026	Cash dividend payment,Changing The director(s),To consideration for approval of amendments to the Company's Articles of Association, Articles 30, 34, and 45.
STOWER	23/3/2026	16/4/2026	Capital increase,Acquisition and disposition of assets / Acquisition or Disposition of Assets ,To consider and approve the amendment of Article of the Company's Memorandum of Association to reflect the capital reduction
WHART	23/3/2026	29/4/2026	Capital increase,Acquisition and disposition of assets / Acquisition or Disposition of Assets ,Connected transaction,To consider and approve the obtaining of a loan for the amount not exceeding Baht 3,688,800,000 for the Additional Investment in Immo
BIOTEC	24/3/2026	29/4/2026	Omitted dividend payment,Changing The director(s)
COMAN	24/3/2026	30/4/2026	Omitted dividend payment,Changing The director(s)
DHOUSE	24/3/2026	29/4/2026	Omitted dividend payment,Changing The director(s)
EMPIRE	24/3/2026	24/4/2026	Omitted dividend payment,Changing The director(s),To consider and approve the amendment of company's objectives
GLORY	24/3/2026	10/4/2026	Omitted dividend payment,Changing The director(s)
KTMS	24/3/2026	28/4/2026	Cash dividend payment,Changing The director(s)
MONO	24/3/2026	24/4/2026	Omitted dividend payment,Capital increase,The issuance of convertible securities,Changing The director(s),Capital increase under General Mandate
MORE	24/3/2026	24/4/2026	Omitted dividend payment,Changing The director(s)
PEER	24/3/2026	28/4/2026	Omitted dividend payment,Changing The director(s)
SMO	24/3/2026	29/4/2026	Cash dividend payment,The issuance of debentures,Changing The director(s)
TAKUNI	24/3/2026	24/4/2026	Omitted dividend payment,Changing The director(s),To consider and approve the amendment of company's objectives
WACOAL	24/3/2026	27/4/2026	Cash dividend payment,Changing The director(s)
AJA	25/3/2026	23/4/2026	Omitted dividend payment,Changing The director(s)
FE	25/3/2026	29/4/2026	Cash dividend payment,Changing The director(s),Amendment of the Company's name and seal / Memorandum of Association / Articles of Association
GTV	25/3/2026	21/4/2026	Omitted dividend payment,Changing The director(s)
NOBLE	25/3/2026	28/4/2026	Omitted dividend payment,Changing The director(s),Amendment to the Company's Article of Association
PERM	25/3/2026	22/4/2026	Omitted dividend payment,Changing The director(s)
PTECH	25/3/2026	21/4/2026	Omitted dividend payment,The issuance of convertible securities,Changing The director(s),To consider and approve the amendment of company's article of association
RABBIT	25/3/2026	27/4/2026	Omitted dividend payment,Changing The director(s)
RAM	25/3/2026	30/4/2026	Cash dividend payment,Changing The director(s)
ACE	26/3/2026	30/4/2026	Cash dividend payment,Changing The director(s)
AKS	26/3/2026	30/4/2026	Omitted dividend payment,Capital increase,Change of par value,Changing The director(s),To consider and approve the amendment of Article of the Company's Memorandum of Association to reflect the capital reduction
AXTRART	26/3/2026	-	Fund management,Financial position and performance,Appointment of auditors and audit costs,Distribution payment of the year 2025
B52	26/3/2026	28/4/2026	Omitted dividend payment,Changing The director(s)
CGH	26/3/2026	29/4/2026	Omitted dividend payment,Changing The director(s),To consider and approve the amendment of company's objectives
DUSIT	26/3/2026	27/4/2026	Omitted dividend payment,Changing The director(s),To consider and approve the amendment of company's article of association
FANCY	26/3/2026	28/4/2026	Omitted dividend payment,Changing The director(s)
GJS	26/3/2026	28/4/2026	Omitted dividend payment,Connected transaction,Changing The director(s)
GSTEEL	26/3/2026	28/4/2026	Omitted dividend payment,Connected transaction,Changing The director(s)
INETREIT	26/3/2026	10/4/2026	Fund management,Financial position and performance,Appointment of auditors and audit costs
KC	26/3/2026	22/4/2026	Omitted dividend payment,Changing The director(s)
KGEN	26/3/2026	24/4/2026	Omitted dividend payment,Capital increase,Changing The director(s)
LEE	26/3/2026	28/4/2026	Cash dividend payment,Changing The director(s)
LTS	26/3/2026	30/4/2026	Omitted dividend payment,Changing The director(s),To consider and approve the amendment of company's objectives
MATI	26/3/2026	28/4/2026	Cash dividend payment,Changing The director(s)
NOVA	26/3/2026	24/4/2026	Omitted dividend payment,Changing The director(s)
PRIME	26/3/2026	29/4/2026	Omitted dividend payment,Capital increase,Changing The director(s)
SAUCE	26/3/2026	23/4/2026	Cash dividend payment,Changing The director(s)
SNPS	26/3/2026	27/4/2026	Cash dividend payment,Connected transaction,Changing The director(s)
STPI	26/3/2026	29/4/2026	Omitted dividend payment,Changing The director(s)
SUPER	26/3/2026	27/4/2026	Omitted dividend payment,Changing The director(s)
TNDT	26/3/2026	29/4/2026	Omitted dividend payment,Capital increase,The issuance of convertible securities,Changing The director(s),To consider and approve the amendment of Article of the Company's Memorandum of Association to reflect the capital reduction
TRV	26/3/2026	24/4/2026	Omitted dividend payment,Changing The director(s)
WELL	26/3/2026	30/4/2026	Omitted dividend payment,Changing The director(s),To consider and approve the amendment of company's objectives
EGATIF	27/3/2026	-	Fund management,Financial position and performance,Appointment of auditors and audit costs

Source: SET

Exhibit 19: Upcoming XM [2/2]

Symbol	X-Date	Meeting Date	Agenda
IVF	27/3/2026	23/4/2026	Omitted dividend payment,Capital increase,The issuance of convertible securities,Changing The director(s)
KBSPF	27/3/2026	-	Fund management,Financial position and performance,Appointment of auditors and audit costs
NEX	27/3/2026	23/4/2026	Omitted dividend payment,Capital increase,Connected transaction,Changing The director(s),To consider and approve the amendment of Article of the Company's Memorandum of Association to reflect the capital reduction
NRF	27/3/2026	28/4/2026	Omitted dividend payment,Capital increase,Changing The director(s),To consider and approve the amendment of Article of the Company's Memorandum of Association to reflect the capital reduction
PB	27/3/2026	30/4/2026	Cash dividend payment,Changing The director(s)
RML	27/3/2026	22/4/2026	Omitted dividend payment,Changing The director(s)
SKIN	27/3/2026	28/4/2026	Omitted dividend payment,Changing The director(s)
THMUI	27/3/2026	28/4/2026	Omitted dividend payment,Changing The director(s)
TRC	27/3/2026	30/4/2026	Omitted dividend payment,Changing The director(s)
TTLPF	27/3/2026	-	Fund management,Financial position and performance,Appointment of auditors and audit costs
YGG	27/3/2026	30/4/2026	Omitted dividend payment,Changing The director(s)
BR	30/3/2026	17/4/2026	Cash dividend payment,Changing The director(s)
CHOW	30/3/2026	30/4/2026	Omitted dividend payment,Changing The director(s)
CIG	30/3/2026	30/4/2026	Omitted dividend payment,Capital increase,Changing The director(s),To consider and approve the amendment of Article of the Company's Memorandum of Association to reflect the capital reduction
CREDIT	30/3/2026	24/4/2026	Cash dividend payment,Changing The director(s)
DPAIN	30/3/2026	28/4/2026	Omitted dividend payment,Changing The director(s)
FVC	30/3/2026	30/4/2026	Omitted dividend payment,Acquisition and disposition of assets / Acquisition or Disposition of Assets ,Changing The director(s)
JAK	30/3/2026	23/4/2026	Cash dividend payment,Changing The director(s)
MK	30/3/2026	29/4/2026	Omitted dividend payment,Changing The director(s)
QHOP	30/3/2026	-	1/12/2025
TRUE	30/3/2026	30/4/2026	Cash dividend payment,Changing The director(s)
TU-PF	30/3/2026	-	1/12/2025
UP	30/3/2026	22/4/2026	Cash dividend payment,Changing The director(s)
UPF	30/3/2026	22/4/2026	Omitted dividend payment,Changing The director(s)
ZAA	30/3/2026	28/4/2026	Omitted dividend payment,Changing The director(s)
BYD	31/3/2026	29/4/2026	Omitted dividend payment,Changing The director(s)
EMC	31/3/2026	29/4/2026	Omitted dividend payment,Capital increase,The issuance of debentures,Changing The director(s),To consider and approve the amendment of Article of the Company's Memorandum of Association to reflect the capital reduction
ITD	31/3/2026	22/4/2026	Omitted dividend payment,Changing The director(s)
JCK	31/3/2026	29/4/2026	Omitted dividend payment,Capital increase,Changing The director(s),To consider and approve the amendment of Article of the Company's Memorandum of Association to reflect the capital reduction
QDC	31/3/2026	30/4/2026	Omitted dividend payment,Capital increase,Changing The director(s),To consider and approve the amendment of Article of the Company's Memorandum of Association to reflect the capital reduction
SAWANG	31/3/2026	30/4/2026	Omitted dividend payment,Changing The director(s)
SPTX	31/3/2026	27/4/2026	Omitted dividend payment,Changing The director(s)
SQ	31/3/2026	22/4/2026	Omitted dividend payment,Changing The director(s)
STOWER	31/3/2026	29/4/2026	Omitted dividend payment,Changing The director(s)
SUC	31/3/2026	23/4/2026	Cash dividend payment,Changing The director(s)
TCC	31/3/2026	30/4/2026	Omitted dividend payment,Changing The director(s)
TFMAMA	31/3/2026	29/4/2026	Cash dividend payment,Changing The director(s)
TNPF	31/3/2026	-	Fund management,Financial position and performance,Appointment of auditors and audit costs
VS	31/3/2026	27/4/2026	Omitted dividend payment,Capital increase,Changing The director(s),Acknowledge the Company's business plan for the year 2026
WAVE	31/3/2026	29/4/2026	Omitted dividend payment,Changing The director(s)
YONG	31/3/2026	22/5/2026	Connected transaction
GEN	1/4/2026	30/4/2026	Omitted dividend payment,Capital increase,Changing The director(s),To consider other matters (if any).
CRANE	1/4/2026	23/4/2026	Omitted dividend payment,Changing The director(s)
PPPM	1/4/2026	29/4/2026	Omitted dividend payment,Capital increase,The issuance of convertible securities,Changing The director(s)
RWI	1/4/2026	30/4/2026	Omitted dividend payment,Capital increase,Changing The director(s),To consider and approve the amendment of company's objectives
SYNTEC	1/4/2026	30/4/2026	Cash dividend payment,Changing The director(s)
THRE	1/4/2026	28/4/2026	Omitted dividend payment,Changing The director(s),To approve the shareholding and management restructuring plan of the Company and other related matters.
XBIO	1/4/2026	30/4/2026	Omitted dividend payment,Capital increase,Changing The director(s),To consider and approve the amendment of Article of the Company's Memorandum of Association to reflect the capital reduction
CSR	2/4/2026	30/4/2026	Cash dividend payment,Changing The director(s)
SOLAR	2/4/2026	30/4/2026	Omitted dividend payment,Capital increase,Changing The director(s),To consider and approve the amendment of Article of the Company's Memorandum of Association to reflect the capital reduction
TNPC	2/4/2026	24/4/2026	Omitted dividend payment,Changing The director(s)
HEALTH	8/4/2026	30/4/2026	Omitted dividend payment,Changing The director(s)
HYDRO	8/4/2026	29/4/2026	Omitted dividend payment,Change of par value
KPNREIT	8/4/2026	29/4/2026	Fund management,Financial position and performance,Appointment of auditors and audit costs
TCOAT	8/4/2026	30/4/2026	Cash dividend payment,Changing The director(s)
TPL	9/4/2026	27/4/2026	Omitted dividend payment,Changing The director(s)

Source: SET

Exhibit 20: Upcoming XD [1/7]

Symbol	X-Date	Dividend (per Share)	Unit	Operation Period	Source of Dividend	Payment Date	Price	Div Yield	Par
AVGO80	23/03/2026	0.00409	Baht	-	-	29/04/2026	2.06	0.2%	-
JDF	23/03/2026	0.18	Baht	01/01/2025 - 31/12/2025	Both	10/04/2026	2.08	8.7%	0.5
KCE	23/03/2026	0.6	Baht	01/07/2025 - 31/12/2025	Both	08/05/2026	22.60	2.7%	0.5
QQQM19	23/03/2026	0.0164	Baht	-	-	17/04/2026	15.80	0.1%	-
SPCOM80	23/03/2026	0.01171	Baht	-	-	23/04/2026	3.72	0.3%	-
SPENGY80	23/03/2026	0.02324	Baht	-	-	23/04/2026	3.92	0.6%	-
SPFIN80	23/03/2026	0.05943	Baht	-	-	23/04/2026	16.20	0.4%	-
SPHLTH80	23/03/2026	0.02046	Baht	-	-	23/04/2026	4.78	0.4%	-
SPTECH80	23/03/2026	0.01363	Baht	-	-	23/04/2026	8.95	0.2%	-
VT03	24/03/2026	0.00561	Baht	-	-	17/04/2026	3.00	0.2%	-
HSHD23	25/03/2026	0.05796	Baht	-	-	27/04/2026	6.90	0.8%	-
RAM	25/03/2026	0.1	Baht	01/01/2025 - 31/12/2025	NP	29/05/2026	18.30	0.5%	0.1
ACE	26/03/2026	0.01	Baht	01/01/2025 - 31/12/2025	NP	28/05/2026	1.29	0.8%	0.5
INETREIT	26/03/2026	0.0675	Baht	01/01/2026 - 31/01/2026	Both	10/04/2026	12.30	0.5%	10
LEE	26/03/2026	0.2	Baht	01/01/2025 - 31/12/2025	Both	19/05/2026	2.70	7.4%	1
Q-CON	26/03/2026	0.4	Baht	01/01/2025 - 31/12/2025	NP	17/04/2026	7.15	5.6%	1
NOVOB80	27/03/2026	0.03962	Baht	-	-	29/04/2026	1.22	3.2%	-
SCGD	27/03/2026	0.19	Baht	01/01/2025 - 31/12/2025	NP	20/04/2026	5.10	3.7%	10
HONDA19	30/03/2026	0.0629	Baht	-	-	30/06/2026	2.70	2.3%	-
ITOCU19	30/03/2026	0.0599	Baht	-	-	30/06/2026	7.00	0.9%	-
JAK	30/03/2026	0.055	Baht	01/01/2025 - 31/12/2025	NP	14/05/2026	0.80	6.9%	1
MICRON03	30/03/2026	0.00129	Baht	-	-	13/05/2026	4.60	0.0%	-
MICRON19	30/03/2026	0.002	Baht	-	-	08/05/2026	9.20	0.0%	-
MICRON80	30/03/2026	0.00482	Baht	-	-	12/05/2026	13.70	0.0%	-
MITSU19	30/03/2026	0.0215	Baht	-	-	30/06/2026	10.00	0.2%	-
MUFG19	30/03/2026	0.0629	Baht	-	-	30/06/2026	5.60	1.1%	-
NINTENDO19	30/03/2026	0.1159	Baht	-	-	30/06/2026	20.00	0.6%	-
SANRIO80	30/03/2026	0.07004	Baht	-	-	03/07/2026	11.20	0.6%	-
SMFG19	30/03/2026	0.1222	Baht	-	-	30/06/2026	10.60	1.2%	-
SONY80	30/03/2026	0.01251	Baht	-	-	01/07/2026	3.28	0.4%	-
TEL80	30/03/2026	0.06744	Baht	-	-	24/06/2026	8.10	0.8%	-
TOYOTA80	30/03/2026	0.11138	Baht	-	-	18/06/2026	6.85	1.6%	-
UP	30/03/2026	2.5	Baht	01/01/2025 - 31/12/2025	NP	13/05/2026	27.00	9.3%	10
SCGP	31/03/2026	0.35	Baht	01/01/2025 - 31/12/2025	NP	21/04/2026	18.30	1.9%	1
SUC	31/03/2026	1.5	Baht	-	RE	13/05/2026	29.00	5.2%	10
JEPI19	01/04/2026	0.031	Baht	-	-	30/04/2026	6.20	0.5%	-
SCC	01/04/2026	2.5	Baht	01/01/2025 - 31/12/2025	NP	21/04/2026	185.00	1.4%	1
SPBOND80	01/04/2026	0.02616	Baht	-	-	06/05/2026	8.40	0.3%	-
SYNTEC	01/04/2026	0.07	Baht	01/07/2025 - 31/12/2025	NP	15/05/2026	1.70	4.1%	1
CSCO06	02/04/2026	0.01621	Baht	-	-	15/05/2026	3.20	0.5%	-
AXP06	03/04/2026	0.00651	Baht	-	-	29/05/2026	2.42	0.3%	-
ATP30	07/04/2026	0.04	Baht	01/01/2025 - 31/12/2025	Both	24/04/2026	0.84	4.8%	0.25
DCC	07/04/2026	0.01	Baht	01/10/2025 - 31/12/2025	NP	30/04/2026	1.21	0.8%	0.1
JPMUS06	07/04/2026	0.0137	Baht	-	-	29/05/2026	3.16	0.4%	-
JPMUS19	07/04/2026	0.082	Baht	-	-	29/05/2026	19.10	0.4%	-
SMPC	07/04/2026	0.3	Baht	01/07/2025 - 31/12/2025	NP	30/04/2026	9.15	3.3%	1
DBS19	08/04/2026	0.1993	Baht	-	-	05/05/2026	14.70	1.4%	-
JD80	08/04/2026	0.15702	Baht	-	-	20/05/2026	4.50	3.5%	-
TCOAT	08/04/2026	0.5	Baht	-	RE	26/05/2026	26.25	1.9%	10
BLC	09/04/2026	0.05	Baht	01/01/2025 - 31/12/2025	NP	30/04/2026	3.84	1.3%	0.5
BTNC	09/04/2026	1.5	Baht	01/01/2025 - 31/12/2025	NP	29/04/2026	19.70	7.6%	10
CRM01	09/04/2026	0.0037	Baht	-	-	20/05/2026	3.56	0.1%	-
CRM06	09/04/2026	0.00482	Baht	-	-	20/05/2026	2.50	0.2%	-
CRM80	09/04/2026	0.01389	Baht	-	-	20/05/2026	6.40	0.2%	-

Source: SET

Exhibit 21: Upcoming XD [2/7]

Symbol	X-Date	Dividend (per Share)	Unit	Operation Period	Source of Dividend	Payment Date	Price	Div Yield	Par
GC	09/04/2026	0.22	Baht	01/07/2025 - 31/12/2025	NP	30/04/2026	4.40	5.0%	0.5
GPI	09/04/2026	0.07	Baht	01/06/2025 - 31/12/2025	NP	27/04/2026	1.67	4.2%	0.5
MA80	09/04/2026	0.00275	Baht	-	-	04/06/2026	1.63	0.2%	-
ORCL01	09/04/2026	0.0072	Baht	-	-	21/05/2026	3.06	0.2%	-
ORCL06	09/04/2026	0.00548	Baht	-	-	08/05/2026	1.97	0.3%	-
ORCL19	09/04/2026	0.0133	Baht	-	-	08/05/2026	4.92	0.3%	-
S11	09/04/2026	0.14	Baht	01/01/2025 - 31/12/2025	NP	30/04/2026	3.84	3.6%	1
AUCT	10/04/2026	0.205	Baht	01/07/2025 - 31/12/2025	Both	30/04/2026	5.05	4.1%	0.25
CATL01	10/04/2026	0.0652	Baht	-	-	08/06/2026	6.45	1.0%	-
CATL80	10/04/2026	0.31754	Baht	-	-	10/06/2026	28.25	1.1%	-
KTB	10/04/2026	2.24	Baht	01/01/2025 - 31/12/2025	NP	30/04/2026	34.50	6.5%	5.15
KTB-P	10/04/2026	2.3945	Baht	01/01/2025 - 31/12/2025	NP	30/04/2026	167.50	1.4%	5.15
KTC	10/04/2026	1.77	Baht	01/01/2025 - 31/12/2025	NP	30/04/2026	29.00	6.1%	1
MRVL80	10/04/2026	0.00196	Baht	-	-	27/05/2026	2.86	0.1%	-
QTC	10/04/2026	0.2	Baht	-	RE	30/04/2026	3.56	5.6%	1
TPLAS	10/04/2026	0.04	Baht	01/01/2025 - 31/12/2025	Both	08/05/2026	1.16	3.4%	0.5
WASH	10/04/2026	0.1066	Baht	01/01/2025 - 31/12/2025	NP	29/04/2026	4.98	2.1%	0.5
ABBV19	16/04/2026	0.0455	Baht	-	-	29/05/2026	6.75	0.7%	-
BANPU	16/04/2026	0.18	Baht	-	RE	29/04/2026	6.15	2.9%	1
BPP	16/04/2026	0.35	Baht	01/07/2025 - 31/12/2025	NP	28/04/2026	13.00	2.7%	10
MEB	16/04/2026	1.1	Baht	01/01/2025 - 31/12/2025	NP	05/05/2026	13.90	7.9%	0.5
TCAP	16/04/2026	2.2	Baht	-	RE	30/04/2026	55.50	4.0%	10
TCAP-P	16/04/2026	2.2	Baht	-	RE	30/04/2026	560.00	0.4%	10
TMT	16/04/2026	0.1	Baht	01/01/2025 - 31/12/2025	NP	30/04/2026	3.28	3.0%	1
CFARM	17/04/2026	0.02	Baht	01/01/2025 - 31/12/2025	Both	07/05/2026	0.80	2.5%	1
IT	17/04/2026	0.21	Baht	01/01/2025 - 31/12/2025	NP	05/05/2026	4.04	5.2%	1
KWC	17/04/2026	11.5	Baht	01/01/2025 - 31/12/2025	NP	05/05/2026	275.00	4.2%	10
MAJOR	17/04/2026	0.25	Baht	01/01/2025 - 31/12/2025	NP	06/05/2026	7.25	3.4%	1
STP	17/04/2026	0.42	Baht	01/07/2025 - 31/12/2025	NP	08/05/2026	10.60	4.0%	1
TOG	17/04/2026	0.3	Baht	01/07/2025 - 31/12/2025	Both	06/05/2026	6.70	4.5%	1
UKEM	17/04/2026	0.015	Baht	01/01/2025 - 31/12/2025	NP	07/05/2026	0.76	2.0%	0.25
CPAXT	20/04/2026	0.53	Baht	01/01/2025 - 31/12/2025	NP	07/05/2026	15.40	3.4%	1
FERRARI80	20/04/2026	0.0132	Baht	-	-	28/05/2026	1.04	1.3%	-
KGI	20/04/2026	0.31	Baht	01/01/2025 - 31/12/2025	NP	07/05/2026	4.30	7.2%	1
MCS	20/04/2026	0.7	Baht	01/01/2025 - 31/12/2025	NP	07/05/2026	9.45	7.4%	1
PLANB	20/04/2026	0.0435	Baht	-	RE	08/05/2026	3.82	1.1%	0.1
SCB	20/04/2026	9.28	Baht	01/01/2025 - 31/12/2025	NP	07/05/2026	145.50	6.4%	10
SMART	20/04/2026	0.0675	Baht	01/01/2025 - 31/12/2025	NP	05/05/2026	0.60	11.3%	0.5
SMIT	20/04/2026	0.14	Baht	01/07/2025 - 31/12/2025	NP	07/05/2026	3.52	4.0%	1
YUASA	20/04/2026	0.9023	Baht	01/01/2025 - 31/12/2025	NP	08/05/2026	14.80	6.1%	1
BLA	21/04/2026	0.48	Baht	-	RE	-	19.20	2.5%	1
CRC	21/04/2026	1.11	Baht	01/01/2025 - 31/12/2025	NP	08/05/2026	18.50	6.0%	1
DELL19	21/04/2026	0.0165	Baht	-	-	29/05/2026	5.25	0.3%	-
HERMES80	21/04/2026	0.04731	Baht	-	-	20/05/2026	6.40	0.7%	-
KBANK	21/04/2026	12	Baht	-	RE	08/05/2026	189.50	6.3%	10
MODERN	21/04/2026	0.15	Baht	01/01/2025 - 31/12/2025	Both	07/05/2026	2.08	7.2%	1
SPA	21/04/2026	0.1	Baht	01/01/2025 - 31/12/2025	NP	07/05/2026	3.32	3.0%	0.25
STA	21/04/2026	0.5	Baht	-	RE	08/05/2026	16.60	3.0%	1
STGT	21/04/2026	0.5	Baht	-	RE	08/05/2026	9.95	5.0%	0.5
AIT	22/04/2026	0.21	Baht	01/01/2025 - 31/12/2025	NP	08/05/2026	4.86	4.3%	1
BBL	22/04/2026	8	Baht	-	RE	08/05/2026	166.00	4.8%	10
HMPRO	22/04/2026	0.22	Baht	01/07/2025 - 31/12/2025	NP	07/05/2026	6.10	3.6%	1
PSL	22/04/2026	0.1	Baht	-	RE	07/05/2026	7.05	1.4%	1
TACC	22/04/2026	0.21	Baht	01/01/2025 - 31/12/2025	NP	06/05/2026	5.45	3.9%	0.25

Source: SET

Exhibit 22: Upcoming XD [3/7]

Symbol	X-Date	Dividend (per Share)	Unit	Operation Period	Source of Dividend	Payment Date	Price	Div Yield	Par
NER	23/04/2026	0.26	Baht	01/01/2025 - 31/12/2025	NP	07/05/2026	4.72	5.5%	0.5
ASML01	24/04/2026	0.0619	Baht	-	-	27/05/2026	36.00	0.2%	-
BR	24/04/2026	0.02	Baht	01/01/2025 - 31/12/2025	Both	15/05/2026	1.63	1.2%	5
NUT	24/04/2026	0.17	Baht	01/07/2025 - 31/12/2025	Both	13/05/2026	4.38	3.9%	0.5
THAI	24/04/2026	0.21	Baht	01/01/2025 - 31/12/2025	NP	18/05/2026	6.35	3.3%	1.3
TPS	24/04/2026	0.12	Baht	01/01/2025 - 31/12/2025	NP	19/05/2026	3.30	3.6%	0.5
UOB19	24/04/2026	0.1716	Baht	-	-	22/05/2026	9.50	1.8%	-
ADB	27/04/2026	0.03	Baht	-	RE	15/05/2026	0.60	5.0%	0.5
AMARC	27/04/2026	0.1	Baht	01/01/2025 - 31/12/2025	NP	08/05/2026	3.22	3.1%	0.5
ANI	27/04/2026	0.05	Baht	01/01/2025 - 31/12/2025	NP	19/05/2026	2.68	1.9%	0.5
JPARK	27/04/2026	0.1	Baht	01/01/2025 - 31/12/2025	NP	20/05/2026	2.94	3.4%	0.5
LHFG	27/04/2026	0.05	Baht	01/01/2025 - 31/12/2025	Both	15/05/2026	1.02	4.9%	1
LPH	27/04/2026	0.1	Baht	01/01/2025 - 31/12/2025	Both	08/05/2026	3.70	2.7%	0.5
QH	27/04/2026	0.07	Baht	01/07/2025 - 31/12/2025	NP	19/05/2026	1.36	5.1%	1
SRICHA	27/04/2026	1	Baht	-	RE	05/05/2026	14.20	7.0%	1
TITLE	27/04/2026	0.4	Baht	01/01/2025 - 31/12/2025	NP	15/05/2026	7.80	5.1%	0.5
TKS	27/04/2026	0.36	Baht	01/07/2025 - 31/12/2025	Both	14/05/2026	6.40	5.6%	1
TTB	27/04/2026	0.071	Baht	01/07/2025 - 31/12/2025	NP	20/05/2026	2.24	3.2%	0.95
APCO	28/04/2026	0.091	Baht	01/01/2025 - 31/12/2025	Both	13/05/2026	2.76	3.3%	0.5
III	28/04/2026	0.15	Baht	01/01/2025 - 31/12/2025	Both	15/05/2026	3.90	3.8%	0.5
IROYAL	28/04/2026	0.43	Baht	01/01/2025 - 31/12/2025	Both	15/05/2026	6.00	7.2%	0.5
JSP	28/04/2026	0.0474	Baht	01/01/2025 - 31/12/2025	NP	15/05/2026	1.96	2.4%	0.5
LVMH01	28/04/2026	0.1277	Baht	-	-	27/05/2026	10.80	1.2%	-
MCA	28/04/2026	0.044	Baht	01/01/2025 - 31/12/2025	NP	19/05/2026	1.16	3.8%	0.5
MPJ	28/04/2026	0.34	Baht	01/01/2025 - 31/12/2025	NP	19/05/2026	3.92	8.7%	0.5
MTC	28/04/2026	0.29	Baht	01/01/2025 - 31/12/2025	NP	15/05/2026	29.25	1.0%	1
SPREME	28/04/2026	0.12	Baht	01/01/2025 - 31/12/2025	NP	20/05/2026	1.56	7.7%	0.5
STEG19	28/04/2026	0.2671	Baht	-	-	29/05/2026	28.25	0.9%	-
SUN	28/04/2026	0.05	Baht	01/07/2025 - 31/12/2025	NP	20/05/2026	2.72	1.8%	0.5
UAC	28/04/2026	0.2	Baht	01/01/2025 - 31/12/2025	Both	15/05/2026	2.82	7.1%	0.5
WHAUP	28/04/2026	0.1925	Baht	01/01/2025 - 31/12/2025	Both	18/05/2026	4.34	4.4%	1
88TH	29/04/2026	0.185	Baht	01/01/2025 - 31/12/2025	NP	19/05/2026	5.15	3.6%	1
ACG	29/04/2026	0.04	Baht	01/01/2025 - 31/12/2025	Both	18/05/2026	0.63	6.3%	0.5
BBIK	29/04/2026	0.48	Baht	01/01/2025 - 31/12/2025	NP	20/05/2026	18.70	2.6%	0.5
BCH	29/04/2026	0.3	Baht	01/01/2025 - 31/12/2025	NP	22/05/2026	9.70	3.1%	1
BIS	29/04/2026	0.04	Baht	01/07/2025 - 31/12/2025	NP	18/05/2026	2.04	2.0%	0.5
BJC	29/04/2026	0.36	Baht	01/07/2025 - 31/12/2025	NP	21/05/2026	14.00	2.6%	1
DTCI	29/04/2026	0.25	Baht	-	RE	22/05/2026	19.00	1.3%	10
EASON	29/04/2026	0.08	Baht	01/01/2025 - 31/12/2025	NP	15/05/2026	1.10	7.3%	1
INET	29/04/2026	0.126	Baht	01/01/2025 - 31/12/2025	NP	22/05/2026	3.56	3.5%	1
KKP	29/04/2026	4.2	Baht	01/01/2025 - 31/12/2025	NP	21/05/2026	72.00	5.8%	10
KLINIQ	29/04/2026	0.75	Baht	01/01/2025 - 31/12/2025	NP	21/05/2026	23.80	3.2%	0.5
LH	29/04/2026	0.12	Baht	01/07/2025 - 31/12/2025	Both	20/05/2026	3.80	3.2%	1
LOREAL80	29/04/2026	0.0263	Baht	-	-	27/05/2026	1.32	2.0%	-
MEDEZE	29/04/2026	0.08	Baht	01/01/2025 - 31/12/2025	Both	19/05/2026	6.20	1.3%	0.5
MOONG	29/04/2026	0.16	Baht	01/01/2025 - 31/12/2025	NP	19/05/2026	2.18	7.3%	0.5
MOSHI	29/04/2026	1.22	Baht	01/01/2025 - 31/12/2025	NP	22/05/2026	33.50	3.6%	1
PANEL	29/04/2026	0.033	Baht	01/01/2025 - 31/12/2025	NP	20/05/2026	1.23	2.7%	0.5
PCE	29/04/2026	0.08	Baht	01/01/2025 - 31/12/2025	NP	20/05/2026	2.48	3.2%	1
PROUD	29/04/2026	0.09	Baht	01/01/2025 - 31/12/2025	NP	18/05/2026	0.99	9.1%	1
READY	29/04/2026	0.15	Baht	01/07/2025 - 31/12/2025	Both	20/05/2026	3.14	4.8%	0.5
RPC	29/04/2026	0.01	Baht	01/01/2025 - 31/12/2025	Both	20/05/2026	0.39	2.6%	1
RPH	29/04/2026	0.18	Baht	01/07/2025 - 31/12/2025	NP	19/05/2026	4.96	3.6%	1
SAK	29/04/2026	0.2	Baht	01/01/2025 - 31/12/2025	NP	20/05/2026	3.34	6.0%	1

Source: SET

Exhibit 23: Upcoming XD [4/7]

Symbol	X-Date	Dividend (per Share)	Unit	Operation Period	Source of Dividend	Payment Date	Price	Div Yield	Par
SALEE	29/04/2026	0.012	Baht	-	RE	22/05/2026	0.38	3.2%	0.25
SAMCO	29/04/2026	0.02	Baht	01/01/2025 - 31/12/2025	NP	20/05/2026	0.72	2.8%	1
SAPPE	29/04/2026	1.75	Baht	01/01/2025 - 31/12/2025	NP	21/05/2026	30.00	5.8%	1
SKR	29/04/2026	0.16	Baht	01/01/2025 - 31/12/2025	NP	15/05/2026	7.00	2.3%	0.5
TERA	29/04/2026	0.067	Baht	-	RE	20/05/2026	1.01	6.6%	0.5
TISCO	29/04/2026	5.75	Baht	01/01/2025 - 31/12/2025	NP	19/05/2026	113.50	5.1%	10
TISCO-P	29/04/2026	5.75	Baht	01/01/2025 - 31/12/2025	NP	19/05/2026	1,346.00	0.4%	10
TWPC	29/04/2026	0.114	Baht	01/01/2025 - 31/12/2025	NP	20/05/2026	2.84	4.0%	1
AHC	30/04/2026	0.52	Baht	-	RE	20/05/2026	13.40	3.9%	1
ASW	30/04/2026	0.5	Baht	01/01/2025 - 31/12/2025	NP	22/05/2026	7.35	6.8%	1
AURA	30/04/2026	0.56	Baht	01/01/2025 - 31/12/2025	NP	21/05/2026	13.00	4.3%	1
CIMBT	30/04/2026	0.059	Baht	01/01/2025 - 31/12/2025	NP	21/05/2026	0.37	15.9%	0.5
CPALL	30/04/2026	1.65	Baht	01/01/2025 - 31/12/2025	NP	22/05/2026	45.50	3.6%	1
CSS	30/04/2026	0.02	Baht	01/07/2025 - 31/12/2025	Both	22/05/2026	0.76	2.6%	0.5
D	30/04/2026	0.105	Baht	01/01/2025 - 31/12/2025	Both	19/05/2026	2.72	3.9%	0.5
DDD	30/04/2026	0.03	Baht	01/01/2025 - 31/12/2025	Both	22/05/2026	5.45	0.6%	1
GABLE	30/04/2026	0.32	Baht	01/01/2025 - 31/12/2025	NP	21/05/2026	3.90	8.2%	1
GYT	30/04/2026	8	Baht	01/01/2025 - 31/12/2025	NP	21/05/2026	184.00	4.3%	10
HTC	30/04/2026	0.54	Baht	01/07/2025 - 31/12/2025	NP	20/05/2026	15.70	3.4%	0.5
JUBILE	30/04/2026	0.14	Baht	01/07/2025 - 31/12/2025	NP	15/05/2026	7.15	2.0%	1
KISS	30/04/2026	0.1	Baht	01/07/2025 - 31/12/2025	Both	22/05/2026	3.28	3.0%	0.5
LRH	30/04/2026	1.45	Baht	-	RE	20/05/2026	33.75	4.3%	10
MGI	30/04/2026	0.25	Baht	01/01/2025 - 31/12/2025	NP	22/05/2026	5.30	4.7%	0.5
MICRO	30/04/2026	0.027	Baht	01/01/2025 - 31/12/2025	NP	22/05/2026	0.88	3.1%	1
MITSI	30/04/2026	0.02	Baht	01/01/2025 - 31/12/2025	NP	18/05/2026	0.56	3.6%	0.5
NSL	30/04/2026	0.55	Baht	01/01/2025 - 31/12/2025	NP	18/05/2026	22.20	2.5%	1
PACO	30/04/2026	0.1	Baht	01/01/2025 - 31/12/2025	Both	18/05/2026	1.28	7.8%	0.5
PIMO	30/04/2026	0.026	Baht	01/07/2025 - 31/12/2025	NP	20/05/2026	1.01	2.6%	0.25
PR9	30/04/2026	0.3	Baht	01/07/2025 - 31/12/2025	NP	22/05/2026	16.20	1.9%	1
PREB	30/04/2026	0.2	Baht	01/01/2025 - 31/12/2025	NP	22/05/2026	3.86	5.2%	1
ROJNA	30/04/2026	0.5	Baht	-	RE	22/05/2026	5.00	10.0%	1
SABINA	30/04/2026	0.6	Baht	-	RE	19/05/2026	15.40	3.9%	1
SAUCE	30/04/2026	1.81	Baht	01/01/2025 - 31/12/2025	NP	19/05/2026	41.00	4.4%	1
SJWD	30/04/2026	0.3	Baht	01/07/2025 - 31/12/2025	NP	20/05/2026	7.60	3.9%	0.5
SMT	30/04/2026	0.03	Baht	-	RE	21/05/2026	1.34	2.2%	1
SYNEX	30/04/2026	0.38	Baht	01/07/2025 - 31/12/2025	NP	12/05/2026	9.30	4.1%	1
TGH	30/04/2026	0.1	Baht	01/01/2025 - 31/12/2025	NP	25/05/2026	10.40	1.0%	10
TRUBB	30/04/2026	0.0031	Baht	01/01/2025 - 31/12/2025	NP	21/05/2026	0.83	0.4%	1
TRUBB	30/04/2026	36 : 1	Share	01/01/2025 - 31/12/2025	NP	21/05/2026	0.83	-	1
AMATA	05/05/2026	0.75	Baht	01/01/2025 - 31/12/2025	NP	26/05/2026	19.00	3.9%	1
BAM	05/05/2026	0.5	Baht	01/01/2025 - 31/12/2025	NP	22/05/2026	6.90	7.2%	5
BAY	05/05/2026	0.9	Baht	-	RE	21/05/2026	25.50	3.5%	10
BE8	05/05/2026	0.04	Baht	01/01/2025 - 31/12/2025	NP	22/05/2026	5.70	0.7%	0.5
BEC	05/05/2026	0.06	Baht	-	RE	21/05/2026	1.98	3.0%	1
COCOCO	05/05/2026	0.12	Baht	-	RE	22/05/2026	5.60	2.1%	0.5
CPF	05/05/2026	0.25	Baht	01/01/2025 - 31/12/2025	NP	22/05/2026	20.20	1.2%	1
EASTW	05/05/2026	0.01	Baht	01/01/2025 - 31/12/2025	Both	26/05/2026	2.60	0.4%	1
EKH	05/05/2026	0.3	Baht	01/01/2025 - 31/12/2025	Both	18/05/2026	5.05	5.9%	0.5
FLOYD	05/05/2026	0.1	Baht	01/01/2025 - 31/12/2025	NP	22/05/2026	1.09	9.2%	0.5
FPI	05/05/2026	0.04	Baht	01/07/2025 - 31/12/2025	NP	15/05/2026	1.67	2.4%	0.25
FTE	05/05/2026	0.09	Baht	01/07/2025 - 31/12/2025	NP	22/05/2026	2.02	4.5%	0.5
IND	05/05/2026	0.073	Baht	01/01/2025 - 31/12/2025	NP	20/05/2026	1.16	6.3%	0.5
IVL	05/05/2026	0.175	Baht	01/01/2025 - 31/12/2025	NP	22/05/2026	23.40	0.7%	1
KCG	05/05/2026	0.51	Baht	01/01/2025 - 31/12/2025	NP	22/05/2026	9.55	5.3%	1

Source: SET

Exhibit 24: Upcoming XD [5/7]

Symbol	X-Date	Dividend (per Share)	Unit	Operation Period	Source of Dividend	Payment Date	Price	Div Yield	Par
KWM	05/05/2026	0.0307	Baht	-	RE	22/05/2026	0.85	3.6%	0.5
MANRIN	05/05/2026	0.25	Baht	01/01/2025 - 31/12/2025	Both	20/05/2026	23.10	1.1%	10
MINT	05/05/2026	0.4	Baht	01/01/2025 - 31/12/2025	NP	22/05/2026	21.50	1.9%	1
MOTHER	05/05/2026	0.034	Baht	01/01/2025 - 31/12/2025	NP	22/05/2026	1.13	3.0%	0.5
NEO	05/05/2026	1.35	Baht	01/01/2025 - 31/12/2025	NP	21/05/2026	19.40	7.0%	1
NEW	05/05/2026	1.6	Baht	01/01/2025 - 31/12/2025	NP	22/05/2026	125.50	1.3%	10
NPK	05/05/2026	0.25	Baht	-	RE	15/05/2026	13.70	1.8%	10
NYT	05/05/2026	0.5	Baht	01/01/2025 - 31/12/2025	NP	22/05/2026	4.10	12.2%	0.5
ONEE	05/05/2026	0.13	Baht	01/07/2025 - 31/12/2025	NP	20/05/2026	2.60	5.0%	2
ORN	05/05/2026	0.02	Baht	01/01/2025 - 31/12/2025	Both	22/05/2026	0.77	2.6%	1
PHG	05/05/2026	0.7	Baht	01/01/2025 - 31/12/2025	NP	27/05/2026	12.70	5.5%	1
PRAPAT	05/05/2026	0.04	Baht	01/01/2025 - 31/12/2025	NP	25/05/2026	0.73	5.5%	0.5
SANOFI80	05/05/2026	0.15275	Baht	-	-	02/06/2026	2.92	5.2%	-
SEAFCO	05/05/2026	0.12	Baht	01/01/2025 - 31/12/2025	NP	20/05/2026	2.42	5.0%	0.5
SICT	05/05/2026	0.025	Baht	01/01/2025 - 31/12/2025	NP	26/05/2026	2.32	1.1%	0.5
SINO	05/05/2026	0.028846	Baht	01/07/2025 - 31/12/2025	Both	22/05/2026	0.86	3.4%	0.5
SITHAI	05/05/2026	0.04	Baht	-	RE	22/05/2026	1.01	4.0%	1
SNNP	05/05/2026	0.345	Baht	01/01/2025 - 31/12/2025	NP	21/05/2026	7.20	4.8%	0.5
SNPS	05/05/2026	0.19	Baht	-	RE	15/05/2026	4.84	3.9%	1
SPBOND80	05/05/2026	0.02616	Baht	-	-	29/05/2026	8.40	0.3%	-
SSF	05/05/2026	0.3704	Baht	01/01/2025 - 31/12/2025	Both	21/05/2026	5.05	7.3%	1
SSP	05/05/2026	0.205	Baht	01/01/2025 - 31/12/2025	NP	21/05/2026	3.48	5.9%	1
TKC	05/05/2026	0.2	Baht	01/01/2025 - 31/12/2025	NP	20/05/2026	7.65	2.6%	1
TPBI	05/05/2026	0.23	Baht	01/01/2025 - 31/12/2025	NP	22/05/2026	3.24	7.1%	1
UBA	05/05/2026	0.09725	Baht	01/01/2025 - 31/12/2025	NP	20/05/2026	1.07	9.1%	0.5
VENTURE19	05/05/2026	0.1212	Baht	-	-	05/06/2026	4.06	3.0%	-
VRANDA	05/05/2026	0.185	Baht	01/01/2025 - 31/12/2025	NP	20/05/2026	4.22	4.4%	5
WINNER	05/05/2026	0.09	Baht	-	RE	19/05/2026	2.08	4.3%	0.25
ALUCON	06/05/2026	16	Baht	01/01/2025 - 31/12/2025	NP	15/05/2026	218.00	7.3%	10
AP	06/05/2026	0.52	Baht	01/01/2025 - 31/12/2025	NP	21/05/2026	8.65	6.0%	1
ARROW	06/05/2026	0.3	Baht	01/01/2025 - 31/12/2025	Both	22/05/2026	5.25	5.7%	1
BAFS	06/05/2026	0.22	Baht	01/07/2025 - 31/12/2025	NP	22/05/2026	8.25	2.7%	1
BKGI	06/05/2026	0.05	Baht	01/01/2025 - 31/12/2025	NP	28/05/2026	1.30	3.8%	0.5
BRR	06/05/2026	0.165	Baht	01/01/2025 - 31/12/2025	NP	22/05/2026	3.96	4.2%	1
CENTEL	06/05/2026	0.67	Baht	01/01/2025 - 31/12/2025	NP	21/05/2026	31.75	2.1%	1
CHG	06/05/2026	0.05	Baht	01/01/2025 - 31/12/2025	NP	22/05/2026	1.43	3.5%	0.1
COLOR	06/05/2026	0.03	Baht	01/01/2025 - 31/12/2025	Both	22/05/2026	1.00	3.0%	1
CREDIT	06/05/2026	0.98	Baht	01/01/2025 - 31/12/2025	NP	22/05/2026	17.50	5.6%	5
DITTO	06/05/2026	0.25	Baht	01/01/2025 - 31/12/2025	NP	21/05/2026	10.70	2.3%	0.5
ILINK	06/05/2026	0.31	Baht	01/01/2025 - 31/12/2025	NP	21/05/2026	4.58	6.8%	1
IP	06/05/2026	0.073	Baht	01/01/2025 - 31/12/2025	NP	25/05/2026	4.16	1.8%	0.5
L&E	06/05/2026	0.04	Baht	-	RE	20/05/2026	1.17	3.4%	1
MATI	06/05/2026	0.1	Baht	-	RE	27/05/2026	3.12	3.2%	1
MFEC	06/05/2026	0.5	Baht	01/01/2025 - 31/12/2025	NP	15/05/2026	5.90	8.5%	1
NCP	06/05/2026	0.057	Baht	01/01/2025 - 31/12/2025	Both	22/05/2026	0.92	6.2%	0.5
NETBAY	06/05/2026	0.8	Baht	01/07/2025 - 31/12/2025	NP	20/05/2026	18.40	4.3%	1
PIS	06/05/2026	0.2	Baht	01/01/2025 - 31/12/2025	NP	27/05/2026	3.66	5.5%	0.5
PL	06/05/2026	0.062	Baht	01/01/2025 - 31/12/2025	NP	22/05/2026	1.31	4.7%	1
PMC	06/05/2026	0.018314	Baht	01/01/2025 - 31/12/2025	NP	26/05/2026	0.87	2.1%	1
PMC	06/05/2026	20 : 1	Share	01/01/2025 - 31/12/2025	NP	26/05/2026	0.87	-	1
PRAKIT	06/05/2026	0.9	Baht	01/01/2025 - 31/12/2025	NP	21/05/2026	11.80	7.6%	1
PRI	06/05/2026	0.1875	Baht	01/04/2025 - 31/12/2025	Both	27/05/2026	4.02	4.7%	0.5
PRM	06/05/2026	0.25	Baht	-	RE	26/05/2026	7.80	3.2%	1
ROCK	06/05/2026	1	Baht	01/01/2025 - 31/12/2025	NP	26/05/2026	11.10	9.0%	10

Source: SET

Exhibit 25: Upcoming XD [6/7]

Symbol	X-Date	Dividend (per Share)	Unit	Operation Period	Source of Dividend	Payment Date	Price	Div Yield	Par
SELIC	06/05/2026	23 : 1	Share	01/01/2025 - 31/12/2025	NP	22/05/2026	2.72	-	0.5
SELIC	06/05/2026	0.03522	Baht	01/01/2025 - 31/12/2025	NP	22/05/2026	2.72	1.3%	0.5
SEMB19	06/05/2026	0.129	Baht	-	-	29/05/2026	5.25	2.5%	-
SPALI	06/05/2026	0.7	Baht	01/07/2025 - 31/12/2025	NP	19/05/2026	16.80	4.2%	1
SPI	06/05/2026	0.2	Baht	-	RE	21/05/2026	43.75	0.5%	1
SPI	06/05/2026	2 : 1	Share	-	RE	21/05/2026	43.75	-	1
STARM	06/05/2026	0.058	Baht	01/01/2025 - 31/12/2025	NP	26/05/2026	0.94	6.2%	0.5
TAN	06/05/2026	0.27	Baht	01/01/2025 - 31/12/2025	NP	26/05/2026	4.04	6.7%	1
TATG	06/05/2026	0.07	Baht	01/01/2025 - 31/12/2025	NP	22/05/2026	0.99	7.1%	1
TGE	06/05/2026	0.00319	Baht	-	RE	22/05/2026	1.24	0.3%	0.5
TOA	06/05/2026	0.39	Baht	01/07/2025 - 31/12/2025	NP	26/05/2026	12.60	3.1%	1
VIBHA	06/05/2026	0.06	Baht	01/01/2025 - 31/12/2025	NP	27/05/2026	1.39	4.3%	0.1
APP	07/05/2026	0.23	Baht	01/01/2025 - 31/12/2025	NP	20/05/2026	2.66	8.6%	0.5
ASEFA	07/05/2026	0.35	Baht	01/01/2025 - 31/12/2025	NP	21/05/2026	3.98	8.8%	1
AU	07/05/2026	0.25	Baht	01/01/2025 - 31/12/2025	NP	25/05/2026	4.76	5.3%	0.1
AWC	07/05/2026	0.08	Baht	01/01/2025 - 31/12/2025	Both	28/05/2026	2.02	4.0%	1
AYUD	07/05/2026	1.67	Baht	01/01/2025 - 31/12/2025	Both	29/05/2026	37.00	4.5%	1
BPS	07/05/2026	0.0125	Baht	01/01/2025 - 31/12/2025	Both	25/05/2026	0.42	3.0%	0.5
CCP	07/05/2026	0.01	Baht	01/01/2025 - 31/12/2025	NP	27/05/2026	0.26	3.8%	0.25
CH	07/05/2026	0.03	Baht	-	RE	26/05/2026	1.64	1.8%	0.5
CHARAN	07/05/2026	0.9	Baht	01/01/2025 - 31/12/2025	NP	28/05/2026	16.40	5.5%	10
CKP	07/05/2026	0.088	Baht	01/01/2025 - 31/12/2025	Both	22/05/2026	2.22	4.0%	1
ESTAR	07/05/2026	0.02	Baht	01/01/2025 - 31/12/2025	NP	26/05/2026	0.22	9.1%	1
FM	07/05/2026	0.2	Baht	01/07/2025 - 31/12/2025	NP	22/05/2026	3.94	5.1%	2
HARN	07/05/2026	0.12	Baht	01/01/2025 - 31/12/2025	NP	22/05/2026	2.00	6.0%	0.5
ICC	07/05/2026	0.7	Baht	-	RE	26/05/2026	25.00	2.8%	1
KTMS	07/05/2026	0.013	Baht	01/01/2025 - 31/12/2025	NP	26/05/2026	1.65	0.8%	0.5
KUMWEL	07/05/2026	0.06	Baht	01/01/2025 - 31/12/2025	NP	22/05/2026	1.08	5.6%	0.5
MENA	07/05/2026	0.015	Baht	01/01/2025 - 31/12/2025	NP	21/05/2026	0.65	2.3%	0.5
MFC	07/05/2026	1.25	Baht	01/01/2025 - 31/12/2025	NP	25/05/2026	22.60	5.5%	1
MGT	07/05/2026	0.065	Baht	01/07/2025 - 31/12/2025	NP	22/05/2026	1.90	3.4%	0.5
NKT	07/05/2026	0.18	Baht	01/01/2025 - 31/12/2025	NP	26/05/2026	4.10	4.4%	1
NNCL	07/05/2026	0.06	Baht	01/01/2025 - 31/12/2025	NP	25/05/2026	1.56	3.8%	1
NTF	07/05/2026	0.1145	Baht	01/10/2025 - 31/12/2025	NP	22/05/2026	11.90	1.0%	0.5
OCC	07/05/2026	0.05	Baht	-	RE	27/05/2026	10.20	0.5%	1
OSP	07/05/2026	0.4	Baht	01/07/2025 - 31/12/2025	Both	28/05/2026	14.40	2.8%	1
PAF	07/05/2026	0.01	Baht	01/01/2025 - 31/12/2025	NP	25/05/2026	0.66	1.5%	0.51
PCC	07/05/2026	0.14	Baht	01/01/2025 - 31/12/2025	NP	28/05/2026	2.70	5.2%	1
PCSGH	07/05/2026	0.12	Baht	01/07/2025 - 31/12/2025	NP	21/05/2026	3.08	3.9%	1
PIN	07/05/2026	0.216	Baht	01/01/2025 - 31/12/2025	NP	22/05/2026	4.24	5.1%	1
RBF	07/05/2026	0.21	Baht	01/01/2025 - 31/12/2025	NP	22/05/2026	3.56	5.9%	1
S&J	07/05/2026	1.45	Baht	01/01/2025 - 31/12/2025	NP	27/05/2026	35.25	4.1%	1
SAFE	07/05/2026	0.41	Baht	01/01/2025 - 31/12/2025	NP	22/05/2026	6.05	6.8%	1
SAWAD	07/05/2026	0.35	Baht	01/01/2025 - 31/12/2025	NP	28/05/2026	23.00	1.5%	1
SC	07/05/2026	0.1	Baht	01/01/2025 - 31/12/2025	NP	26/05/2026	1.97	5.1%	1
SCAP	07/05/2026	0.07	Baht	01/01/2025 - 31/12/2025	Both	26/05/2026	1.08	6.5%	1
SHANG	07/05/2026	0.5	Baht	01/01/2025 - 31/12/2025	NP	26/05/2026	44.50	1.1%	10
SK	07/05/2026	0.03	Baht	01/01/2025 - 31/12/2025	Both	22/05/2026	0.57	5.3%	0.5
SKY	07/05/2026	0.3	Baht	01/01/2025 - 31/12/2025	NP	29/05/2026	12.90	2.3%	0.5
SO	07/05/2026	0.18	Baht	01/07/2025 - 31/12/2025	Both	20/05/2026	4.34	4.1%	1
SORKON	07/05/2026	0.25	Baht	01/01/2025 - 31/12/2025	NP	25/05/2026	3.82	6.5%	1
SPC	07/05/2026	1.6	Baht	01/01/2025 - 31/12/2025	NP	26/05/2026	55.75	2.9%	1
SSSC	07/05/2026	0.165	Baht	01/01/2025 - 31/12/2025	NP	25/05/2026	2.18	7.6%	1
SWC	07/05/2026	0.2	Baht	01/07/2025 - 31/12/2025	NP	22/05/2026	4.44	4.5%	0.5

Source: SET

Exhibit 26: Upcoming XD [7/7]

Symbol	X-Date	Dividend (per Share)	Unit	Operation Period	Source of Dividend	Payment Date	Price	Div Yield	Par
TBN	07/05/2026	0.21	Baht	01/01/2025 - 31/12/2025	NP	27/05/2026	3.94	5.3%	0.5
TC	07/05/2026	0.3	Baht	01/01/2025 - 31/12/2025	NP	27/05/2026	5.60	5.4%	1
TEAMG	07/05/2026	0.16	Baht	01/01/2025 - 31/12/2025	NP	29/05/2026	2.86	5.6%	0.5
TLI	07/05/2026	0.6	Baht	01/01/2025 - 31/12/2025	NP	-	10.40	5.8%	1
TOPP	07/05/2026	4.42	Baht	01/01/2025 - 31/12/2025	NP	28/05/2026	135.00	3.3%	10
TPCS	07/05/2026	0.7	Baht	01/01/2025 - 31/12/2025	NP	22/05/2026	10.40	6.7%	1
WACOAL	07/05/2026	0.55	Baht	-	RE	26/05/2026	17.50	3.1%	1
WP	07/05/2026	0.3	Baht	01/01/2025 - 31/12/2025	Both	22/05/2026	3.76	8.0%	1
AKR	08/05/2026	0.065	Baht	01/01/2025 - 31/12/2025	NP	22/05/2026	0.90	7.2%	0.8
ALLA	08/05/2026	0.1	Baht	01/01/2025 - 31/12/2025	NP	22/05/2026	1.22	8.2%	0.5
CSR	08/05/2026	2.03	Baht	01/01/2025 - 31/12/2025	NP	28/05/2026	70.25	2.9%	10
ETC	08/05/2026	0.048	Baht	01/01/2025 - 31/12/2025	NP	21/05/2026	0.69	7.0%	0.5
FE	08/05/2026	8.5	Baht	01/01/2025 - 31/12/2025	Both	26/05/2026	170.00	5.0%	10
GTB	08/05/2026	0.06	Baht	01/01/2025 - 31/12/2025	NP	28/05/2026	0.73	8.2%	0.25
HUMAN	08/05/2026	0.2	Baht	01/01/2025 - 31/12/2025	NP	28/05/2026	4.30	4.7%	0.5
PJW	08/05/2026	0.11	Baht	01/01/2025 - 31/12/2025	NP	25/05/2026	2.04	5.4%	0.5
SANKO	08/05/2026	0.04	Baht	01/01/2025 - 31/12/2025	NP	25/05/2026	0.82	4.9%	0.5
SMD100	08/05/2026	0.06242	Baht	01/01/2025 - 31/12/2025	NP	26/05/2026	1.85	3.4%	0.5
TMAN	08/05/2026	0.32	Baht	01/01/2025 - 31/12/2025	NP	26/05/2026	12.30	2.6%	0.75
TPAC	08/05/2026	0.438	Baht	01/01/2025 - 31/12/2025	NP	27/05/2026	9.40	4.7%	1
TRT	08/05/2026	0.14	Baht	01/01/2025 - 31/12/2025	NP	28/05/2026	4.02	3.5%	1
TRUE	08/05/2026	0.12	Baht	01/10/2025 - 31/12/2025	Both	26/05/2026	14.10	0.9%	4
AKP	11/05/2026	0.046	Baht	01/01/2025 - 31/12/2025	NP	22/05/2026	0.70	6.6%	0.5
ILM	11/05/2026	0.75	Baht	01/01/2025 - 31/12/2025	NP	22/05/2026	13.30	5.6%	5
KAMART	11/05/2026	0.11	Baht	01/01/2025 - 31/12/2025	NP	26/05/2026	8.35	1.3%	0.6
M	11/05/2026	0.5	Baht	01/01/2025 - 31/12/2025	Both	26/05/2026	19.20	2.6%	1
MRDIYT	11/05/2026	0.06	Baht	01/01/2025 - 31/12/2025	NP	27/05/2026	8.60	0.7%	0.5
ORI	11/05/2026	0.049	Baht	01/10/2025 - 31/12/2025	Both	28/05/2026	1.80	2.7%	0.5
PB	11/05/2026	0.79	Baht	01/07/2025 - 31/12/2025	Both	27/05/2026	49.00	1.6%	1
PPM	11/05/2026	0.05	Baht	01/01/2025 - 31/12/2025	NP	22/05/2026	1.38	3.6%	0.5
TFMAMA	11/05/2026	2.02	Baht	01/07/2025 - 31/12/2025	Both	20/05/2026	186.50	1.1%	1
TRP	11/05/2026	0.25	Baht	01/01/2025 - 31/12/2025	NP	27/05/2026	4.52	5.5%	0.5
TRU	11/05/2026	0.25	Baht	01/01/2025 - 31/12/2025	Both	25/05/2026	3.94	6.3%	1
UMI	11/05/2026	0.04	Baht	01/01/2025 - 31/12/2025	NP	28/05/2026	0.68	5.9%	1
WHA	11/05/2026	0.1438	Baht	01/01/2025 - 31/12/2025	Both	28/05/2026	4.10	3.5%	0.1
CM	12/05/2026	0.031	Baht	01/01/2025 - 31/12/2025	NP	28/05/2026	1.66	1.9%	1
PG	12/05/2026	0.5	Baht	-	RE	27/05/2026	6.85	7.3%	1
SENX	12/05/2026	0.0047	Baht	01/01/2025 - 31/12/2025	NP	22/05/2026	0.24	2.0%	0.5
SMO	12/05/2026	0.2	Baht	-	RE	29/05/2026	4.98	4.0%	1
BGC	13/05/2026	0.04	Baht	01/07/2025 - 31/12/2025	NP	27/05/2026	4.48	0.9%	5
K	13/05/2026	0.03	Baht	-	RE	28/05/2026	1.00	3.0%	0.5
SENA	13/05/2026	0.138295	Baht	01/01/2025 - 31/12/2025	NP	25/05/2026	1.89	7.3%	1
WINDOW	13/05/2026	0.03	Baht	01/01/2025 - 31/12/2025	NP	28/05/2026	0.77	3.9%	0.5
CHAO	14/05/2026	0.17	Baht	01/01/2025 - 31/12/2025	NP	29/05/2026	4.38	3.9%	1
BWG	15/05/2026	0.0075	Baht	01/01/2025 - 31/12/2025	NP	29/05/2026	0.33	2.3%	0.25
TENCENT13	15/05/2026	0.04354	Baht	-	-	24/06/2026	4.38	1.0%	-
TENCENT19	15/05/2026	0.1084	Baht	-	-	30/06/2026	10.60	1.0%	-
TENCENT80	15/05/2026	0.21678	Baht	-	-	25/06/2026	21.20	1.0%	-
MSFT01	21/05/2026	0.0061	Baht	-	-	06/07/2026	3.70	0.2%	-
MSFT03	21/05/2026	0.00463	Baht	-	-	09/07/2026	2.56	0.2%	-
MSFT19	21/05/2026	0.0081	Baht	-	-	26/06/2026	4.20	0.2%	-
MSFT80	21/05/2026	0.01437	Baht	-	-	06/07/2026	6.25	0.2%	-
AIA19	28/05/2026	0.0587	Baht	-	-	30/06/2026	3.58	1.6%	-
DISNEY19	30/06/2026	0.1027	Baht	-	-	07/08/2026	16.30	0.6%	-
UNIQL080	28/08/2026	0.05475	Baht	-	-	01/12/2026	13.10	0.4%	-

Source: SET