

5 MARCH 2024

SPOTLIGHT ON THAILAND

Published Reports

- CARABAO GROUP (CBG TB) - Beer market share comes slower than expected; Maintain BUY TP THB70.00
- CHAROEN POKPHAND FOODS (CPF TB) - Exiting unprofitable units with a profit projection in 2024; Maintain HOLD TP THB20.00
- SAPPE (SAPPE TB) - Bet on a 1Q24 profit recovery to a new high; Maintain BUY TP THB108.00
- AAPICO HITECH (AH TB) - 4Q23 results at first glance; Maintain BUY TP THB45.00
- SRISAWAD CORP (SAWAD TB) - Key takeaways from analyst meeting; Maintain HOLD TP THB40.00

Economics

- FCDs post healthy uptick in 2023
- Fetco eyes interest rate cuts for rebound
- Gold price hits high amid global surge

Corporate News

- Ratch, Gulf and HKH mark milestone in importation of LNG
- Govt weighs law change to target illegal short sellers
- TKC eager to increase cybersecurity revenue

Indices	Index as of 4-Mar-24	Change -1D (%)	Change YTD (%)	Net Foreign YTD (USD m)
Thailand SET	1,363	(0.4)	(3.8)	(828)
China SHCOMP	3,039	0.4	2.2	
Hong Kong HSI	16,596	0.0	(2.6)	
India SENSEX	73,872	0.1	2.3	(2,395)
Indonesia JCI	7,277	(0.5)	0.1	1,132
Korea KOSPI	2,674	1.2	0.7	9,116
MY FBMKLCI	1,539	0.1	5.8	
PH PCOMP	6,952	0.5	7.8	235
SG FSSTI	3,122	(0.4)	(3.6)	
Taiwan TWSE	19,305	2.0	7.7	6,223
VN VNINDEX	1,261	0.2	11.6	(24)
MSCI Emerging	1,030	0.6	0.6	
Nikkei 225	40,109	0.5	19.9	
FTSE 100	7,640	(0.5)	(1.2)	
CAC 40	7,956	0.3	5.5	
DAX	17,716	(0.1)	5.8	
Dow Jones	38,990	(0.2)	3.5	
Nasdaq	16,208	(0.4)	8.0	
S&P 500	5,131	(0.1)	7.6	
Brent	82.80	(0.9)	7.5	
Dubai	84.74	2.6	10.8	
WTI	78.74	(1.5)	9.9	
GOLD	2,114.48	0.0	2.5	
Trade data (THB m)	Buy (THB m)	Sell (THB m)	Net (THB m)	Share (%) (THB m)
Foreign	21,901	22,485	(583)	55
Retail	11,127	10,359	768	27
Prop Trade	3,250	3,164	86	8
Local Institution	4,077	4,348	(271)	10
Total Trade	40,356	40,356	(0)	100
Rates	Last close 4/3/2024	1M ago 5/2/2024	End last yr 29/12/2023	1yr ago 6/3/2023
THB/USD	35.82	35.80	34.14	34.70
Inflation *	(1.11)	(0.83)	(0.83)	5.02
MLR **	7.12	7.12	7.12	6.43
1Y Fixed *	1.65	1.65	1.65	1.14
Govt bond 10Y	2.55	2.64	2.68	2.61
Commodity (USD/bbl)	Last close 4/3/2024	1M ago 2/2/2024	End last yr 29/12/2023	1yr ago 3/3/2023
Brent	83.55	77.33	77.04	85.83
Dubai	84.74	79.17	76.51	83.08
WTI	78.74	72.28	71.65	79.68
Gold	2,114	2,025	2,063	1,847
Baltic Dry	2,203	1,436	2,094	1,211
(USD/ton)	01-Mar-24	23-Feb-24	25-Dec-20	03-Mar-23
Coal	126.75	124.92	84.45	187.28
% change	1.5	(1.0)	50.1	(32.3)

* chg y-y% last at end of most recent month end; ** Avg of 4 major banks;

Sources: Bloomberg, except coal from BANPU

FSSIA Thailand Research

Jitra Amornthum, Head of Research
 Songklod Wongchai, Strategy | +66 2646 9970 | songklod.won@fssia.com
 Veeravat Virochpoka, Strategy | +66 2646 9965 | veeravat.v@fssia.com
 Usanee Liuruti, Banks & Finance | +66 2646 9967 | usanee.l@fssia.com
 Sureeporn Teewasuwet, Foods & Beverage | +66 2646 9972 | sureeporn.t@fssia.com
 Thanyatorn Songwutti, Property | +66 2646 9963 | thanyatorn.s@fssia.com
 Teerapol Udomvej, Healthcare, Tourism & Aviation | +66 2646 9969 | teerapol.u@fssia.com
 Thada Jiracharoenyong, RA | +66 2646 9964 | thada.j@fssia.com
 Maeta Cherdasatirakul, RA | +66 2646 9971 | maeta.c@fssia.com
 Manida Sithiseree | +66 2611 3590/91 | manida.s@fnsyrus.com
 Chaiyon Rerkkriengkrai | +66 2611 3592/93 | chaiyon.r@fnsyrus.com
 Napaporn Klongvanitchakij | +66 2611 3582/83 | napaporn.k@fnsyrus.com
 Rattana Detphattharakoson | +66 2611 3580/71 | rattana.d@fnsyrus.com
 Siriluk Kiatkosolkul | +66 2611 3584/85 | siriluk.k@fnsyrus.com

Thailand Equity Sales:

Thailand Equity Trading:

THIS UNEDITED REPORT IS PREPARED UNDER TIME CONSTRAINT BY FSS INTERNATIONAL INVESTMENT ADVISORY SECURITIES CO., LTD. (FSSIA). ALL VIEWS EXPRESSED IN THIS REPORT ACCURATELY REFLECT THE PERSONAL VIEW OF THE ANALYST(S) WITH REGARD TO ANY AND ALL OF THE SUBJECT SECURITIES, COMPANIES OR ISSUERS MENTIONED IN THIS REPORT; AND (II) NO PART OF THE COMPENSATION OF THE ANALYST(S) WAS, IS, OR WILL BE, DIRECTLY OR INDIRECTLY, RELATED TO THE SPECIFIC RECOMMENDATIONS OR VIEWS EXPRESSED HEREIN. The information herein has been obtained from sources believed to be reliable and accurate; however FSSIA makes no representation as to the accuracy and completeness of such information. Information and opinions expressed herein are subject to change without notice. FSSIA has no intention to solicit investors to buy or sell any security in this report.

Published Reports

CARABAO GROUP (CBG TB) - Beer market share comes slower than expected; Maintain BUY TP THB70.00

Beer revenue target under review after lower-than-expected market share

We have a bearish view of the analyst meeting on March 4 after management disclosed that the beer market share in November - December 2023 stood at just 2%. Also, January - February was a low season for alcohol consumption, and the competition in the traditional trade market was fierce. As a result, beer revenue should decrease q-q, implying an even lower market share of under 2%. CBG is reviewing its beer revenue target of 25m units/month (including all channels) and has set a beer market share of 7-10%. Given such changes, CBG has delayed its capacity expansion plan for glass bottles from 2Q24. Additionally, it has set a 2024 domestic sales revenue growth target of 5-7% y-y and a higher international sales growth target of 10% for energy drinks.

1Q24 profit should weaken q-q but jump y-y

In the short term, we anticipate a 1Q24 profit of THB601m (-7.5% q-q, +128% y-y). The sharp y-y surge should come from a low base last year. However, the profit should weaken q-q due to slightly lower energy drink sales revenue in the domestic market. According to the latest data, Carabao Dang's market share in January 2024 decreased to 23.2% from 23.6% in 4Q23. Export revenue should increase q-q and y-y due to Cambodia, Myanmar, and Vietnam, while revenue from beer packaging should soar 19% q-q after can production surges. However, we expect 26% q-q lower beer revenue to THB370m in line with seasonality.

Expected 29% y-y growth, despite a 12% cut in 2024E profit

Given a slower-than-expected beer market share, we have slashed our 2024 beer revenue assumption to 11% of total revenue from 35% earlier. Specifically, we have cut our beer sales target to 8m units/month (30% of our previous target), lower than the actual number in 4Q23. Meanwhile, we maintain our conservative energy drink assumption, with average domestic and export sales growth of 4-5% y-y. Although the beer market share missed its target, Tawan Dang still maintains its EFL sponsorship of 50%. Hence, we have decreased our 2024E net profit by 12% to THB2.48b. Despite the cut, it still implies a 29% y-y growth.

Recommend BUY on weakness after slashing TP to THB70

Following our profit cut, we have lowered our PE target to 28x from 30x due to the gloomy outlook and several ongoing concerns. It leads to a cut in our TP to THB70 from THB87. However, CBG plummeted today, reflecting the weaker-than-expected beer unit. Hence, we recommend BUY on weakness.

Exhibit 1: CBG - 1Q24 earnings preview

	4Q22 (THB m)	1Q23 (THB m)	2Q23 (THB m)	3Q23 (THB m)	4Q23 (THB m)	1Q24E (THB m)	Change (q-q%)	Change (y-y%)
Sales	4,490	4,124	4,707	4,707	5,316	5,132	(3.5)	24.5
Cost of sales	3,299	3,107	3,447	3,445	3,975	3,803	(4.3)	22.4
Gross profit	1,191	1,017	1,260	1,262	1,341	1,329	(0.9)	30.7
SG&A	772	729	712	655	564	616	9.2	(15.5)
Operating profit	492	350	588	650	819	755	(7.7)	115.6
Interest expense	35	36	44	51	52	53	1.2	46.7
Tax expense	55	61	80	80	115	106	(8.3)	74.0
Reported net profit	404	264	482	530	649	601	(7.5)	127.7
Core profit	404	264	482	530	649	601	(7.5)	127.7
Key Ratios (%)							(ppt)	(ppt)
Gross margin	26.5	24.7	26.8	26.8	25.2	25.9	0.7	1.2
SG&A / Sales	17.2	17.7	15.1	13.9	10.6	12.0	1.4	(5.7)
Operating margin	11.0	8.5	12.5	13.8	15.4	14.7	(0.7)	6.2
Net margin	9.0	6.4	10.2	11.3	12.2	11.7	(0.5)	5.3
Core margin	9.0	6.4	10.2	11.3	12.2	11.7	(0.5)	5.3
Operating Statistics (THB m)								
Branded Own sales	2,756	2,486	3,017	2,798	2,896	2,955	2.0	18.8
Branded Own - domestic	1,325	1,163	1,526	1,651	1,505	1,480	(1.7)	27.3
Branded Own - overseas	1,432	1,324	1,491	1,147	1,391	1,475	6.0	11.4
Branded OEM sales	82	49	64	61	59	62	5.1	25.3
3rd party sales	1,478	1,464	1,452	1,450	2,088	1,790	(14.3)	22.3
Other (packaging)	174	124	174	398	273	325	19.0	162.7
GM - Branded Own (%)	34.2	33.7	35.2	35.6	37.5	37.0	(0.5)	3.3
GM - Branded OEM (%)	12.2	12.1	14.1	18.0	18.6	18.0	(0.6)	5.9
GM - 3rd party (%)	12.2	9.6	10.0	10.0	8.2	8.0	(0.2)	(1.6)
GM - other (%)	32.2	26.7	25.3	27.6	25.6	25.0	(0.6)	(1.7)
Domestic sales (% of total sales)	67.8	67.9	68.0	75.3	73.6	71.3	(2.3)	3.4
Overseas sales (% of total sales)	32.2	32.1	32.0	24.7	26.4	28.7	2.3	(3.4)
Domestic sales (THB m)	3,046	2,799	3,202	3,546	3,911	3,657	(6.5)	30.7
Overseas sales (THB m)	1,444	1,325	1,505	1,161	1,405	1,475	5.0	11.3
CLMV	1,292	1,194	1,291	953	1,201	1,285	7.0	7.6
China	22	9	41	38	0	0	nm	nm
UK	45	39	56	48	46	40	(13.0)	2.6
Others	84	83	117	123	159	150	(5.7)	80.7

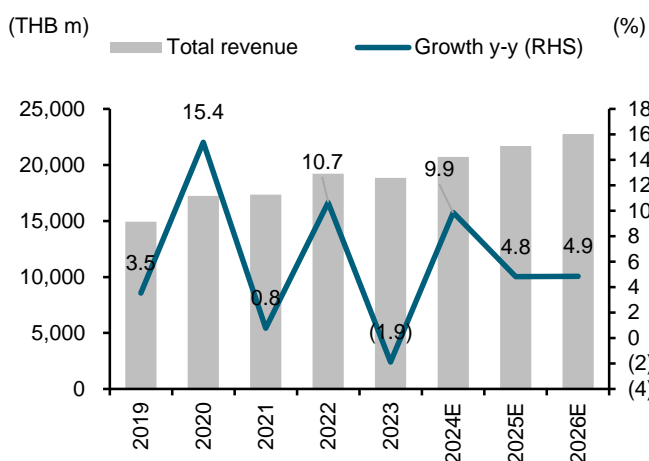
Sources: CBG; FSSIA estimates

Exhibit 2: Changes in key assumptions for CBG

	Current			Previous			Change		
	2024E (THB m)	2025E (THB m)	2026E (THB m)	2024E (THB m)	2025E (THB m)	2026E (THB m)	2024E (%)	2025E (%)	2026E (%)
Total sale value (THB m)	20,712	21,712	22,766	27,797	29,229	30,736	(25.5)	(25.7)	(25.9)
Costs	15,463	16,157	16,897	21,801	22,962	24,142	(29.1)	(29.6)	(30.0)
Gross profit	5,249	5,555	5,868	5,996	6,267	6,594	(12.5)	(11.4)	(11.0)
SG&A expense	2,423	2,540	2,664	2,780	2,923	3,074	(12.8)	(13.1)	(13.3)
Interest expense	163	163	164	187	197	201	0.0	0.0	0.0
Reported net profit	2,481	2,663	2,824	2,828	2,925	3,083	(12.3)	(8.9)	(8.4)
Core profit	2,481	2,663	2,824	2,828	2,925	3,083	(12.3)	(8.9)	(8.4)
Key ratios (%)									
Total revenue growth	25.3	25.6	25.8	21.6	21.4	21.5	3.8	4.1	4.3
Net profit growth	28.9	7.3	6.0	46.9	3.4	5.4	(18.0)	3.9	0.6
Core profit growth	28.9	7.3	6.0	46.9	3.4	5.4	(18.0)	3.9	0.6
Gross margin	25.3	25.6	25.8	21.6	21.4	21.5	3.8	4.1	4.3
SG&A to sales	11.7	11.7	11.7	10.0	10.0	10.0	1.7	1.7	1.7
Net margin	12.0	12.3	12.4	10.2	10.0	10.0	1.8	2.3	2.4
Core margin	12.0	12.3	12.4	10.2	10.0	10.0	1.8	2.3	2.4
Operating statistics (no.)									
Branded Own sales	11,744	12,358	13,005	11,945	12,571	13,230	(1.7)	(1.7)	(1.7)
Branded OEM sales	255	281	309	267	293	323	(4.3)	(4.3)	(4.3)
3rd party sales	7,586	7,890	8,210	14,086	14,790	15,530	(46.1)	(46.7)	(47.1)
Other (packaging) sales	1,127	1,183	1,243	1,500	1,575	1,654	(24.9)	(24.9)	(24.9)
GM - Branded Own (%)	36.0	36.3	36.5	36.2	36.0	36.0	(0.2)	0.3	0.5
GM - Branded OEM (%)	17.0	17.0	17.0	18.0	18.0	18.0	(1.0)	(1.0)	(1.0)
GM - 3rd party (%)	9.0	9.0	9.1	7.4	7.2	7.2	1.7	1.9	1.9
GM - Beer (%)	5.0	5.0	5.0	5.0	5.0	5.0	0.0	0.0	0.0

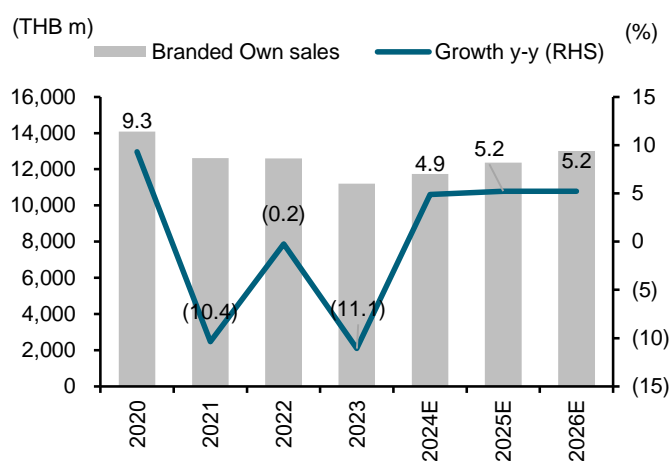
Source: FSSIA estimates

Exhibit 3: Total revenue and growth



Sources: CBG; FSSIA estimates

Exhibit 4: Revenue from branded own product and growth



Sources: CBG; FSSIA estimates

CHAROEN POKPHAND FOODS (CPF TB) - Exiting unprofitable units with a profit projection in 2024; Maintain HOLD TP THB20.00

Performance has passed its trough in 2023

CPF reported a higher operating loss of THB10b in 4Q23 from THB3.7b in 3Q23 due to lower meat prices in Thailand, Vietnam, China, and Cambodia, while feed cost weakness remained slow. As a result, the gross margin contracted to 9.2% from 10.8% in 3Q23. However, CPF turned to post a net profit of THB121m for the period due to a sizable accounting gain of THB2.67b from its Chinese broiler unit sale. Also, CPF disclosed at an analyst meeting that it had divested 20% of its swine unit in China (under its associate CTI), resulting in a substantial gain of THB5.4b. For the year ended 2023, CPF recorded a net loss of THB5.2b, its trough, in our view.

2024 focus: Increasing asset management efficiency

CPF targets a 2024 revenue growth of 5-7% y-y and a gross margin close to 2022 at 13.3%, up from 10% in 2023, after exiting some unprofitable businesses in 2023. It would continue to focus on increasing asset management efficiency to increase liquidity. Toward this end, we expect additional sales of idle or unprofitable assets in 2024. Also, it has cut its 2024 capex plan by 30% to THB20b as its 2022 capacity expansion is still sufficient for 2024 growth. Management guided that meat prices would be flat or edge up in 1H24 before rallying in 2H24 after coordinated efforts to cut farmed pig supply by 5,000 pigs/day for 90 days bear fruits. However, raising costs would gradually decrease following maize and soybean meal price weaknesses.

Expect a lower loss in 1Q24 before turning profitable in 2Q24

Potential drivers for 2024 profit recovery include 1) the divestment of 20% of its unprofitable Chinese swine unit, 2) a robust broiler recovery due to improved broiler exports and increased broiler prices to a profitable level, 3) lower farming costs, and 4) improved international businesses. In particular, Vietnam has turned profitable. Also, Hylife has reported a profit upon the completion of its restructuring. Nonetheless, 1Q24 may remain in the negative territory, slower than previously thought, due to the remaining 80% of the swine units in China, which have farming costs of RMB17 per kg. (vs. a selling price of RMB13-14 per kg). Although the Thai swine unit recovers, it is still in the red and may need to wait until 2H24.

Maintain HOLD rating to wait for a profit recovery

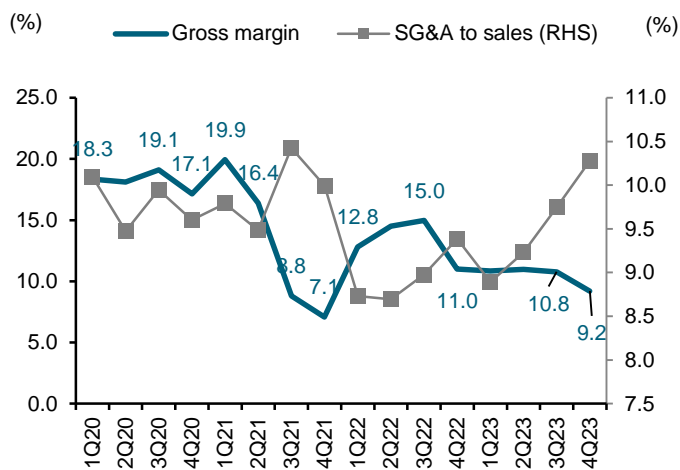
We maintain our 2024E profit of THB10b. However, we have raised our 2025-26 estimate by 9-19% to factor in a lower loss following the divestment of its Chinese broiler and swine units. Although a slow recovery in the Thai swine unit would offset the positive impact in 2024, we anticipate a higher recovery in 2H24, benefiting the 2025-26 profit. Hence, we reaffirm our 2024 TP of THB20 (PE 17x, unchanged). Given a limited upside, we retain our HOLD call. CPF did not pay any dividend for its performance in 2023. Also, the D/E and net IBD/E ratios ended 2023 increased to 2.52x and 1.59x, respectively.

Exhibit 5: CPF - 4Q23 earnings results

	1Q22	2Q22	3Q22	4Q22	1Q23	2Q23	3Q23	4Q23	----- Change -----	
	(THB m)	(THB m)	(THB m)	(THB m)	(THB m)	(THB m)	(THB m)	(THB m)	(q-q%)	(y-y%)
Sales	138,887	155,996	160,266	159,048	143,781	150,246	144,498	147,319	2.0	(7.4)
Cost of sales	121,096	133,372	136,287	141,569	128,202	133,750	128,940	133,750	3.7	(5.5)
Gross profit	17,791	22,624	23,979	17,479	15,579	16,496	15,558	13,569	(12.8)	(22.4)
SG&A	12,124	13,564	14,385	14,928	12,787	13,868	14,079	15,141	7.5	1.4
Operating profit	6,179	10,257	10,564	3,849	3,663	3,607	2,364	(3,200)	(235.3)	(183.1)
Interest expense	4,469	4,360	5,494	6,035	6,068	6,157	6,377	6,903	8.2	14.4
Tax expense	1,158	3,522	2,020	(698)	429	123	(115)	163	(241.5)	(123.4)
Profit (loss) sharing	(336)	(793)	2,294	2,580	(1,088)	(893)	528	643	21.8	(75.1)
Biological gain (loss)	1,098	729	(886)	469	(41)	1,616	319	(1,169)	(466.2)	(349.3)
Other gain (loss)	1,509	1,953	421	52	879	1,419	1,603	5,062	215.8	9625.8
Reported net profit	2,842	4,208	5,108	1,812	(2,725)	(792)	(1,811)	121	nm	nm
Core profit	235	1,526	5,572	1,290	(3,563)	(3,827)	(3,733)	(10,877)	nm	nm
Key Ratios (%)									(ppt)	(ppt)
Gross margin	12.8	14.5	15.0	11.0	10.8	11.0	10.8	9.2	(0.2)	(4.2)
SG&A to sales	8.7	8.7	9.0	9.4	8.9	9.2	9.7	10.3	0.5	0.8
Operating margin	4.4	6.6	6.6	2.4	2.5	2.4	1.6	(2.2)	(0.8)	(5.0)
Net margin	2.0	2.7	3.2	1.1	(1.9)	(0.5)	(1.3)	0.1	(0.7)	(4.4)
Core margin	0.2	1.0	3.5	0.8	(2.5)	(2.5)	(2.6)	(7.4)	(0.0)	(6.1)
Operating statistics (THB/kg)										
Broiler price-TH	39.0	43.6	47.4	42.6	39.2	43.8	36.6	37.9	(16.4)	(22.8)
Swine price-TH	91.0	104.0	109.8	101.3	84.7	72.5	62.7	62.3	(13.5)	(42.9)
Shrimp price 70 unit -TH	174.3	143.3	145.0	141.7	155.0	124.7	124.3	136.0	(0.3)	(14.3)
Corn price-TH	11.4	13.1	12.1	12.6	13.3	12.9	11.7	10.4	(9.3)	(3.7)
Soybean meal price-TH	21.4	23.1	23.1	23.3	24.0	23.4	21.5	22.0	(8.1)	(6.9)
Swine price-VN (VND/kg.)	52,809	55,387	62,760	52,819	50,045	55,095	57,023	47,082	3.5	(9.1)
Swine price-CH (RMB/kg.)	13.1	15.4	22.5	24.6	15.2	14.4	16.1	15.3	11.8	(28.5)

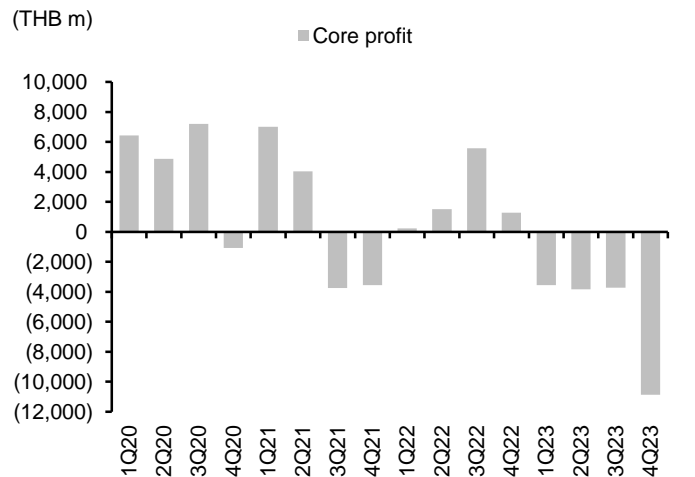
Source: CPF

Exhibit 6: Quarterly gross margin and SG&A to sales



Sources: CPF, FSSIA's compilation

Exhibit 7: Quarterly core profit



Sources: CPF, FSSIA's compilation

Exhibit 8: Changes in key assumptions for CPF

	Current			Previous			Change		
	2024E (THB m)	2025E (THB m)	2026E (THB m)	2024E (THB m)	2025E (THB m)	2026E (THB m)	2024E (%)	2025E (%)	2026E (%)
Total revenue	599,211	627,513	652,922	599,984	627,254	664,906	(0.1)	0.0	(1.8)
Cost of sales	526,706	550,329	572,613	526,186	549,474	581,793	0.1	0.2	(1.6)
Gross profit	72,505	77,184	80,309	73,798	77,779	83,113	(1.8)	(0.8)	(3.4)
SG&A expenses	53,330	55,849	58,110	53,399	55,826	59,177	(0.1)	0.0	(1.8)
Operating profit	23,968	26,356	27,423	25,199	26,972	29,256	(4.9)	(2.3)	(6.3)
Interest expense	24,633	24,988	25,212	25,122	25,149	25,814	(1.9)	(0.6)	(2.3)
Profit (loss) sharing	8,378	9,957	10,861	6,037	8,584	11,130	38.8	16.0	(2.4)
Reported net profit	10,082	11,557	13,253	10,013	10,623	11,107	0.7	8.8	19.3
Key ratios (%)									
Total revenue growth	2.3	4.7	4.0	3.7	4.5	4.7			
Net profit growth	nm	14.6	14.7	nm	6.1	4.6			
Gross margin	12.1	12.3	12.3	12.3	12.4	12.5	(0.2)	(0.1)	(0.2)
SG&A to sales	8.9	8.9	8.9	8.9	8.9	8.9	0.0	0.0	0.0
Operating margin	4.0	4.2	4.2	4.2	4.3	4.4	(0.2)	(0.1)	(0.2)
Net margin	1.7	1.8	2.0	1.7	1.7	1.7	(0.0)	0.1	0.4
Key assumptions									
Price									
Broiler price-TH (THB/kg.)	41.0	42.0	43.0	41.0	42.0	43.0	0.0	0.0	0.0
Swine price-TH (THB/kg.)	72.0	72.0	72.0	72.0	72.0	72.0	0.0	0.0	0.0
Shrimp price-70 unit (THB/kg.)	145.0	145.0	145.0	145.0	145.0	145.0	0.0	0.0	0.0
Corn price-TH (THB/kg.)	10.0	10.0	10.0	10.5	10.0	10.0	(4.8)	0.0	0.0
Soybean meal price-TH (THB/kg.)	20.5	20.0	19.0	21.0	20.0	19.0	(2.4)	0.0	0.0
Swine price-VN (VND)	52,000	52,000	52,000	52,000	52,000	52,000	0.0	0.0	0.0
Swine price-CH (RMB)	16.0	17.0	18.0	16.0	17.0	18.0	0.0	0.0	0.0

Source: FSSIA estimates

SAPPE (SAPPE TB) - Bet on a 1Q24 profit recovery to a new high; Maintain BUY TP THB108.00

Management maintains its high growth target in 2024

We have a bullish view of the analyst meeting held today (March 4, 24), where management retained its 2024 revenue growth target of 20-25% y-y brought on by export growth of 20-25% y-y and domestic sales growth of 20% y-y. Also, it reaffirmed its high gross margin target after a gross margin of 44.8% in 2023. Although sugar prices increased, and SAPPE started to recognize the depreciation of new production lines, it had locked in prices in forward contracts until the end of 2024. Also, lower pet resin costs and higher production efficiency would help offset them. However, management has raised its selling expense-to-sales by 1% and would trim its admin-to-sales. This year, SAPPE will focus its strategy on overseas brand building, especially Mogu Mogu, to create more awareness in a more competitive landscape. Additionally, competitors are introducing more competitive products in overseas markets.

Bet on a 1Q24 profit recovery to a new high

In the short term, we expect an in-line 1Q24 revenue growth of 20-25% y-y to THB1.8b, a new high. It implies a q-q recovery in line with seasonality and increases y-y due to a low base in 1Q23. Primarily, we anticipate 1Q24 profit growth of 120% q-q and 18.6% y-y to THB332m, another new high. Although it is not a high season, and shipping delay problems persist, the impact is much less than during covid. Also, SAPPE has successfully expanded its distribution channel, while we believe SAPPE would delay some orders to realize in 1Q24 due to tight vessel supply in 4Q23.

Capacity expansion of 20-25% p.a. to support growth

SAPPE will begin realizing new production lines from March 2024, resulting in a full-quarter realization in 2Q24. They will help raise its production capacity by 20-25% to support 2024 growth. Additionally, SAPPE is constructing a new factory adjacent to the current one in Pathum Thani with an investment budget of THB1.63b. It will begin to operate the first phase in 1H25, increasing its production capacity by another 20-25%. SAPPE will expand to phase 2 in 2026 with a revenue target of THB10b by the end of the year from THB6bn at the end of 2023. It implies a growth rate of 18.5% CAGR. However, our growth assumption is lower at 12% CAGR to THB8.5b by 2026.

Maintain profit estimate and BUY call at our TP of THB108

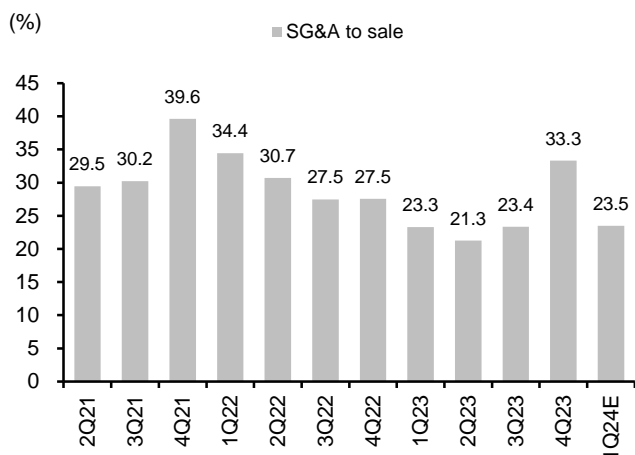
We retain our 2024E net profit growth of 24% y-y to THB1.33b and our TP of THB108 (PE 25x, unchanged). We like a short-term catalyst, i.e., an expected new-high 1Q24 profit. SAPPE announced a 2023 DPS of THB2.18, implying a 2.4% yield. Since our TP implies a 20% upside, we retain our BUY rating on SAPPE.

Exhibit 9: SAPPE - 1Q24E earnings preview

	1Q23	2Q23	3Q23	4Q23	1Q24E	Change	
	(THB m)	(THB m)	(THB m)	(THB m)	(THB m)	(q-q%)	(y-y%)
Sales	1,520	1,657	1,667	1,209	1,809	49.7	19.0
Cost of sales	864	920	897	661	999	51.2	15.6
Gross profit	656	737	770	548	810	47.9	23.5
SG&A	354	352	389	403	425	5.6	19.9
Operating profit	337	421	412	189	415	120.2	23.4
Other income	35	36	32	43	30	(30.6)	(13.2)
Interest expense	0.71	0.64	0.60	0.61	0.60	(0.8)	(14.9)
Tax expense	67	81	83	43	83	90.9	22.5
Profit (loss) sharing	(1)	(11)	(9)	1	(2)	nm	nm
Reported net profit	275	312	319	168	332	97.4	20.7
Core profit	280	329	325	151	332	120.1	18.6
Key ratios (%)						(ppt)	(ppt)
Gross margin	43.2	44.5	46.2	45.3	44.8	(0.5)	1.6
SG&A to sales	23.3	21.3	23.4	33.3	23.5	(9.8)	0.2
Operating margin	22.1	25.4	24.7	15.6	23.0	7.4	0.8
Net margin	18.1	18.8	19.1	13.9	18.3	4.4	0.3
Core margin	18.4	19.9	19.5	12.5	18.3	5.9	(0.1)
Operating statistics (THB m)							
Domestic revenue	295	283	291	295	309	5.0	5.0
Overseas revenue	1,226	1,374	1,375	934	1,500	60.5	22.4

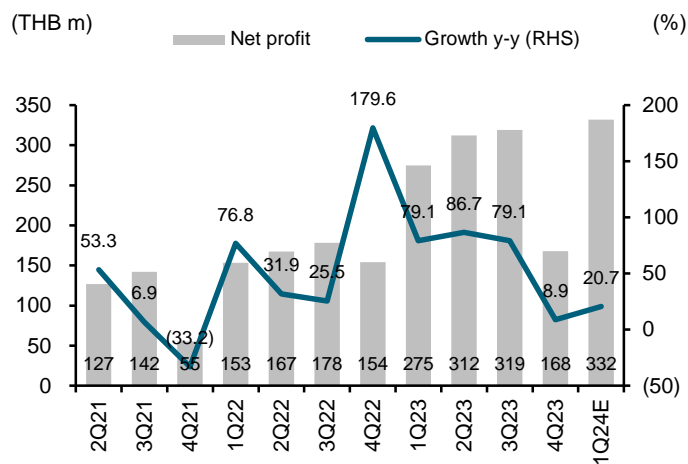
Sources: SAPPE; FSSIA estimates

Exhibit 10: Quarterly SG&A to sales



Sources: SAPPE, FSSIA estimates

Exhibit 11: Quarterly net profit and growth



Sources: SAPPE, FSSIA estimates

Exhibit 12: Key assumptions for SAPPE

	Current			Growth		
	2024E (THB m)	2025E (THB m)	2026E (THB m)	2024E (%)	2025E (%)	2026E (%)
Total sale value (THB m)	7,131	7,896	8,519	17.8	10.7	7.9
Costs	3,950	4,343	4,651	18.2	9.9	7.1
Gross profit	3,180	3,553	3,867	17.3	11.7	8.8
SG&A expense	1,690	1,871	2,019	12.8	10.7	7.9
Interest expense	3	3	3	2.8	3.7	3.5
Reported net profit	1,335	1,504	1,650	24.3	12.7	9.7
Core profit	1,335	1,504	1,650	23.1	12.7	9.7
Key ratios (%)						
Gross margin	44.6	45.0	45.4	(0.2)	0.4	0.4
SG&A to sales	23.7	23.7	23.7	(1.1)	0.0	0.0
Net margin	18.7	19.0	19.4	1.0	0.3	0.3
Core margin	18.7	19.0	19.4	0.8	0.3	0.3
Operating statistics						
Domestic revenue (THB m)	1,280	1,415	1,538	10.1	10.6	8.6
Overseas revenue (THB m)	5,850	6,481	6,981	19.2	10.8	7.7
Domestic revenue portion (%)	18.0	17.9	18.1	(1.2)	(0.0)	0.1
Overseas revenue portion (%)	82.0	82.1	81.9	1.2	0.0	(0.1)

Source: FSSIA estimates

AAPICO HITECH (AH TB) - 4Q23 results at first glance; Maintain BUY TP THB45.00

Core operations in 4Q23 were weaker than expected

Highlights

- AH's 4Q23 net profit surprisingly came in at THB138m (-73% q-q, -61% y-y). This included several non-recurring items, i.e. the translation adjustment of an associate totaling THB171m, an accounting adjustment for AAPICO Avey amounting to THB27m, an impairment on a loan given to its JV amounting to THB76m, and a forex loss of THB153m.
- Excluding those extra items, AH registered a core profit of THB421m in 4Q23, declining 3% q-q and 22% y-y, but better than our estimate by 8% due to higher-than-expected other income.
- AH's core operations in 4Q23 were weaker than expected. Its operating revenue decreased from both the automotive parts business and car dealership business due to the weak demand for pickup trucks in Thailand and the stricter lending policies from financial institutions.
- The 4Q23 gross margin declined following the weak sales, while SG&A expenses to sales soared, resulting in a material decrease in EBITDA (-19% q-q, -24% y-y).
- For 2023, AH registered a core profit of THB1.8b, +4% y-y. Despite 7% y-y revenue growth and a 29 bps increase in the gross margin, the SG&A expenses remained high, and the rising interest expenses caused the core profit to climb slowly.
- AH announced a dividend of THB0.95 per share for its 2H23 operational period, implying a dividend yield of 4%. The XD will be on 14 March 2024.

Outlook

- In 2024, Thailand's automotive manufacturers continue to face a bumpy road, at least in 1H24, in our view. The Federation of Thai Industries forecasts only a 3% rise in car production in 2024, reaching an expected total of 1.9m units. The demand seems to be weak, further exacerbated by banks' tightened car loans.

Our projections are under review. The positive for AH shares is that they trade at low multiples but have a high dividend yield.

Exhibit 13: AH - 4Q23 results summary

	4Q22	1Q23	2Q23	3Q23	4Q23	----- Change -----		2022	2023	Change
	(THB m)	(THB m)	(THB m)	(THB m)	(THB m)	(q-q%)	(y-y%)	(THB m)	(THB m)	(y-y%)
Auto parts	5,449	5,966	5,166	5,555	5,057	(9.0)	(7.2)	20,333	21,744	6.9
Car dealership and others	2,342	2,160	1,987	2,066	2,077	0.5	(11.3)	7,634	8,290	8.6
Revenue	7,792	8,126	7,153	7,624	7,131	(6.5)	(8.5)	27,967	30,034	7.4
Operating costs	(6,782)	(7,100)	(6,380)	(6,729)	(6,313)	(6.2)	(6.9)	(24,777)	(26,522)	7.0
Gross profit	1,010	1,026	772	895	819	(8.5)	(18.9)	3,191	3,512	10.1
SG&A expenses	(512)	(458)	(429)	(457)	(538)	17.7	5.0	(1,719)	(1,881)	9.4
EBIT	498	568	344	439	281	(35.9)	(43.5)	1,471	1,632	10.9
Depreciation	(309)	(311)	(310)	(312)	(329)	5.6	6.7	1,154	1,262	9.4
EBITDA	807	879	653	751	611	(18.6)	(24.3)	2,625	2,894	10.2
Interest expense	(98)	(91)	(111)	(124)	(138)	11.6	41.1	(342)	(464)	35.6
Other income	86	74	95	103	101	(1.7)	17.3	327	373	14.0
Associates	95	123	32	81	(103)	nm	nm	452	132	(70.8)
FX gain/loss	(237)	(35)	111	69	(153)	nm	nm	63	(9)	nm
Tax	(38)	(74)	(63)	(74)	129	nm	nm	(177)	(82)	(53.8)
Net profit	355	562	410	501	138	(72.5)	(61.2)	1,824	1,610	(11.7)
Core profit	539	597	299	432	421	(2.6)	(22.0)	1,708	1,771	3.7
EPS (THB)	1.00	1.58	1.16	1.41	0.38	(72.9)	(61.2)	5.14	4.54	(11.7)
Core EPS (THB)	1.52	1.68	0.84	1.22	1.22	(2.6)	(22.0)	4.81	4.99	3.7
Key ratios	(%)	(%)	(%)	(%)	(%)	(ppt)	(ppt)	(%)	(%)	(ppt)
Gross margin	13.0	12.6	10.8	11.7	11.5	(0.3)	(1.5)	11.4	11.7	0.3
SG&A to sales	6.6	5.6	6.0	6.0	7.5	1.5	1.0	6.1	6.3	0.1
Operating margin	6.4	7.0	4.8	5.8	3.9	(1.8)	(2.4)	5.3	5.4	0.2
EBITDA margin	10.4	10.8	9.1	9.8	8.6	(1.3)	(1.8)	9.4	9.6	0.2
Core profit margin	6.9	7.3	4.2	5.7	6.9	1.2	(0.1)	6.1	5.9	(0.2)

Sources: AH, FSSIA's compilation

SRISAWAD CORP (SAWAD TB) - Key takeaways from analyst meeting; Maintain HOLD TP THB40.00

The key takeaways from SAWAD's 4Q23 analyst meeting (1 March) comprise 1) the positive development of its group's asset quality; and 2) the 2024-25 business guidance. Despite most targets trending in a better direction, we view them as quite optimistic, especially the loan growth, credit costs, cost-to-income ratio, and net profit growth (20-30% p.a.).

Hence, we retain our forecast with 2024-26 earnings growth of 12.1% CAGR and 2024 GGM-based TP at THB40, which implies a P/BV of 1.72x under the expected LT ROE of 18.1% and COE of 12.6%, which still leaves a limited potential upside to the dividend-diluted price of THB36.5, as per our calculations.

Highlights

Positive developments in the group's asset quality: The critical concerns for the company were the increase in foreclosed assets (SAWAD) and losses from sales of repossessed cars (SCAP). Regarding the first issue, SAWAD clarified the rise in foreclosed properties at the end of 2023, of which 50% came from its AMC subsidiary, SWP (purchased NPLs and NPAs, which are currently undergoing the legal process). Whereas 31% belonged to SAWAD, which showed a slight increase from 3Q23, the rest belonged to SCAP, which reported a decrease of 27.9% q-q but a sharp increase of 234.1% y-y.

For the latter issue, SAWAD posted an increase in total losses of THB1.2b in 2023 from a mere THB230m in 2022, implying 1.23% of total outstanding loans, of which SAWAD's average losses were 0.46% and SCAP's were 2.77%. Management expects the group's loss ratio to average 1.2-1.4% in 2024-25, where SAWAD would show a relatively stable ratio from 2023, while SCAP would have a declining ratio of below 2.50% on a backdrop of better credit quality following its more prudent policy with a lower LTV ratio (to 80-90% from 100%) and higher down payments (to 20-40% from 0%) since 1Q23, owing to the regulated motorcycle hire-purchase interest rate of 23%.

Exhibit 14: SAWAD – 4Q23 operating results

FY ending Dec 31	4Q22	1Q23	2Q23	3Q23	4Q23	Change		2023	Change
	(THB m)	(THB m)	(THB m)	(THB m)	(THB m)	(q-q%)	(y-y%)	(THB m)	(y-y%)
Interest income	2,830	3,108	3,444	4,647	4,546	(2.2)	60.6	15,744	79.3
Interest expense	(277)	(344)	(482)	(690)	(749)	8.6	170.2	(2,266)	163.0
Net interest income	2,552	2,763	2,961	3,956	3,797	(4.0)	48.7	13,478	70.2
Other income	899	868	956	605	767	26.8	(14.7)	3,197	(9.4)
Total income	3,452	3,632	3,917	4,562	4,564	0.0	32.2	16,674	45.7
Operating expenses	(1,692)	(1,778)	(1,776)	(2,447)	(2,281)	(6.8)	34.8	(8,282)	52.2
Pre-provision operating profit	1,760	1,853	2,140	2,115	2,283	8.0	29.8	8,392	39.8
Expected credit loss	(148)	(208)	(575)	(316)	(664)	110.6	348.6	(1,763)	2,155.3
Profit after ECL	1,611	1,646	1,565	1,800	1,619	(10.0)	0.5	6,629	11.9
Operating profit	1,611	1,646	1,565	1,800	1,619	(10.0)	0.5	6,629	11.9
Income tax	(292)	(325)	(342)	(375)	(333)	(11.3)	13.9	(1,375)	25.3
NCI	(106)	(120)	(76)	(37)	(19)	(47.9)	(81.8)	(253)	(27.7)
Net profit	1,213	1,200	1,146	1,387	1,267	(8.7)	4.4	5,001	11.7
EPS (THB)	0.88	0.87	0.83	1.01	0.92	(8.7)	4.4	3.64	11.7
NPL	1,385	1,606	2,303	2,527	2,998	9.7	116.4	2,998	116.4
Loans	55,147	64,475	86,983	92,429	96,981	6.3	75.9	96,981	75.9
Interest bearing debt	36,467	44,441	69,155	76,686	75,983	10.9	108.4	75,983	108.4
Key ratios	4Q22	1Q23	2Q23	3Q23	4Q23			2023	
	(%)	(%)	(%)	(%)	(%)			(%)	
Yield on loans	22.00	20.78	18.19	20.72	19.20			20.70	
Cost of funds	3.36	3.53	3.49	3.90	4.06			4.18	
Spread	18.64	17.25	14.70	16.82	15.14			16.52	
Cost to income	48.99	49.19	45.46	53.63	49.97			49.75	
Credit cost	1.15	1.39	3.04	1.41	2.81			2.32	
NPL / Loan	2.51	2.49	2.65	2.73	3.09			3.09	
LLR / Loan	1.19	1.18	1.36	1.37	1.66			1.66	
Coverage ratio	47.37	47.38	51.28	50.22	53.55			53.55	
D/E (x)	1.40	1.62	2.55	2.69	2.57			2.57	
IBD/E (x)	1.26	1.48	2.42	2.55	2.44			2.44	
S/T debt/IBD (x)	48.44	51.24	42.05	41.49	47.27			47.27	
ROA	7.27	6.47	5.08	5.23	4.56			5.53	
ROE	19.36	18.28	17.49	21.14	18.38			18.58	
Loan growth q-q	15.5	16.9	34.9	6.3	4.9				
Loan growth y-y	63.8	79.8	113.5	93.5	75.9			75.9	

Sources: SAWAD; FSSIA's compilation

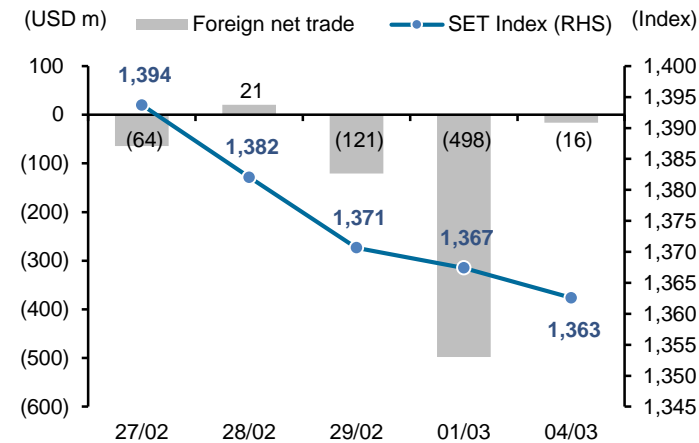
Economic news

- [FCDs post healthy uptick in 2023](#) BANGKOK POST: Foreign currency deposits (FCDs) experienced a robust surge last year, driven by enticing interest rates resulting from global interest rate hikes. As of November 2023, financial institutions that are members of the Deposit Protection Agency (DPA) witnessed a substantial increase in FCDs, with the total value amounting to 812 billion baht, up from 640 billion baht recorded earlier in the year, according to the DPA's data.
- [Fetco eyes interest rate cuts for rebound](#) BANGKOK POST: The likelihood of interest rate cuts in the second half would support the rebound of the Thai economy, now facing challenges as many economies are showing signs of slowdown, says the Federation of Thai Capital Market Organizations (Fetco). Fetco chairman Kobsak Pootrakool said the UK and Japan may have already slid into a recession while China's economy has been suffering from a lingering property crisis.
- [Gold price hits high amid global surge](#) BANGKOK POST: The domestic gold price has hit an all-time high and is now on course to reach 38,000 baht per baht-weight this year as global prices have continued an upward trend to trade near the two-month high of more than US\$2,080 per ounce, said the Gold Traders Association (GTA). The domestic price of gold bars was adjusted twice by 50 baht each before noon on Monday to reach a new all-time high of 35,300 baht per baht-weight despite the recent appreciation of the Thai currency, said GTA president Jitti Tangsitpakdi.

Corporate news

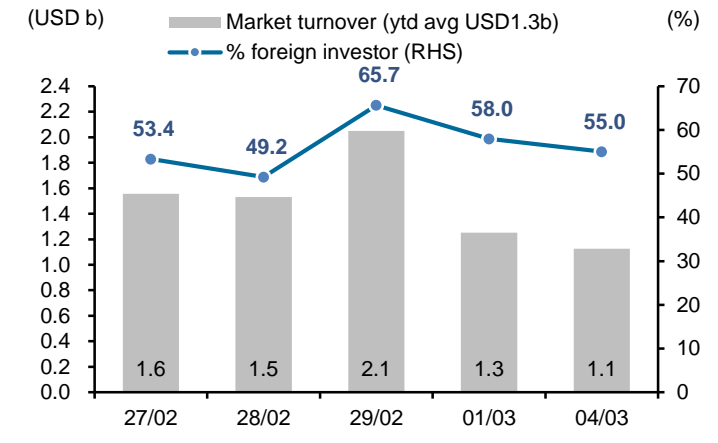
- [Ratch, Gulf and HKH mark milestone in importation of LNG](#) BANGKOK POST: Ratch Group Plc and Gulf Energy Development Plc have successfully imported the first 62,000 tonnes of liquefied natural gas (LNG) through Hin Kong Power Holding Co (HKH) to supply 700 megawatts to Hin Kong power plant Unit 1, which commenced commercial operations on March 1. In accordance with the National Energy Policy Council's guidelines to encourage competition in the natural gas sector and comply with the Energy Regulatory Commission's requirements for shipper licence applications, HKH -- a joint venture in which Ratch owns 51% with Gulf holding the other 49% -- has been one of eight companies to be awarded a shipper licence.
- [Govt weighs law change to target illegal short sellers](#) BANGKOK POST: Thailand plans to extend its crackdown on illegal short selling as shares remain in the doldrums, according to the stock exchange's chairman. Market authorities are considering changing the law so they can file charges against both individuals and companies for such trades, said Pichai Chuhavajira, chairman of the Stock Exchange of Thailand (SET). Existing rules allow only for punishment against securities companies that submit the short-selling order, he said.
- [TKC eager to increase cybersecurity revenue](#) BANGKOK POST: SET-listed digital solutions provider Turnkey Communication Services (TKC) targets the cybersecurity business contributing 5% of total revenue this year, expanding by a double-digit rate annually for five years. Sayam Tiewtranon, chief executive and managing director of TKC, said the company is upbeat about business growth this year and targets revenue growth of at least 10% contributed by its eight main business groups.

Exhibit 15: Foreign fund flow and SET Index



Source: Bloomberg

Exhibit 16: Foreign participation



Source: Bloomberg

Exhibit 17: Index performance

	SET Index		Index performance (% change)								
	Index	(%chg)	Energy	Bank	Comu	Commerce	Food	Property	Construct	Transport	Petrochem
% of SET Index			21%	11%	9%	10%	5%	6%	3%	8%	2%
Current	1,362.59	(0.4)	0.0	0.5	0.3	(0.9)	(1.5)	(1.0)	(0.1)	(0.9)	(0.4)
-5D	1,398.14	(2.5)	(4.3)	(0.1)	(1.1)	(1.6)	(2.6)	(2.7)	(1.2)	0.1	(1.9)
-1M	1,383.93	(1.5)	(1.8)	2.2	(2.2)	4.4	(3.4)	(0.7)	(1.9)	1.2	2.4
-3M	1,383.54	(1.5)	(3.3)	0.7	0.1	3.8	(3.9)	(2.1)	(5.8)	5.0	(4.0)
-6M	1,547.86	(12.0)	(8.4)	(8.0)	(4.1)	(12.6)	(10.5)	(9.4)	(12.8)	(10.1)	(7.9)
-1Y	1,606.88	(15.2)	(11.9)	(2.6)	(9.8)	(16.3)	(15.9)	(15.0)	(18.8)	(12.0)	(28.0)
WTD	1,367.42	(0.4)	0.0	0.5	0.3	(0.9)	(1.5)	(1.0)	(0.1)	(0.9)	(0.4)
MTD	1,370.67	(0.6)	(0.4)	0.4	1.2	(1.3)	(2.4)	(1.3)	0.3	1.3	(0.8)
QTD	1,415.85	(3.8)	(3.4)	(2.9)	0.9	0.2	(5.9)	(4.4)	(8.6)	4.0	(6.7)
End of 2022	1,415.85	(3.8)	(3.4)	(2.9)	0.9	0.2	(5.9)	(4.4)	(8.6)	4.0	(6.7)

Source: Bloomberg

Exhibit 18: Trade by investor types

	SET Index		Exchange rate (USD:THB)	SET Index		Equity trading / Net position				Bond Net foreign (USD m)
	Index	Change (y-y%)		Average daily turnover (THB m)	(USD m)	Foreign (USD m)	Retail (USD m)	PropTrade (USD m)	Local Inst (USD m)	
2019	1,579.84	1.0	31.06	52,468	1,689	(1,496)	(662)	477	1,681	(502)
2020	1,449.35	(8.3)	31.29	67,335	2,152	(8,287)	6,873	459	953	(1,005)
2021	1,657.62	14.4	32.00	88,443	2,764	(1,632)	3,630	435	(2,330)	6,550
2022	1,668.66	15.1	34.78	53,589	1,541	5,362	(656)	56	(4,758)	4,111
2023	1,415.85	(15.2)	34.81	51,072	1,467	(5,507)	3,348	(146)	2,305	318
2024YTD	1,362.59	(3.8)	35.53	45,106	1,270	(5,507)	3,348	(146)	2,305	319
1Q23	1,609.17	(5.1)	33.92	63,300	1,866	(1,646)	1,594	(83)	136	612
2Q23	1,503.10	(4.2)	34.48	47,432	1,376	(1,461)	593	(120)	987	(178)
3Q23	1,471.43	(7.4)	35.17	49,809	1,416	(1,420)	825	261	333	(716)
4Q23	1,415.85	(15.2)	35.64	42,734	1,199	(981)	336	(204)	849	601
1Q24	1,362.59	(15.3)	35.65	50,648	1,421	(2,164)	1,082	(55)	(199)	(478)
Jul-23	1,556.06	(1.3)	34.61	44,682	1,291	(361)	100	81	181	958
Aug-23	1,565.94	(4.5)	35.04	56,846	1,622	(443)	48	114	280	(1,057)
Sep-23	1,471.43	(7.4)	35.85	47,900	1,336	(616)	677	66	(128)	(618)
Oct-23	1,381.83	(14.1)	36.51	45,582	1,249	(431)	254	(134)	312	458
Nov-23	1,380.18	(15.6)	35.47	44,524	1,255	(548)	300	10	238	474
Dec-23	1,415.85	(15.2)	34.95	38,095	1,090	(2)	(218)	(80)	299	(331)
Jan-24	1,364.52	(18.4)	35.20	62,067	1,763	(562)	888	25	(42)	(112)
Feb-24	1,362.59	(16.0)	35.85	44,920	1,253	(1,105)	157	(62)	(178)	(429)
Mar-24	1,362.59	(15.3)	35.88	44,956	1,253	(498)	36	(18)	21	62
2024YTD	1,362.59	(3.8)	35.53	45,106	1,270	(6,202)	1,082	(55)	(199)	(478)
27/02/2024	1,393.70		35.82	55,732	1,556	(64)	62	7	(5)	(66)
28/02/2024	1,382.05		36.05	55,250	1,533	21	(11)	21	(30)	51
29/02/2024	1,370.67		35.87	73,543	2,050	(121)	115	(13)	19	(11)
01/03/2024	1,367.42		35.95	49,557	1,379	(23)	15	(21)	29	62
04/03/2024	1,362.59		35.82	40,356	1,127	(16)	21	2	(8)	

Source: Bloomberg

Exhibit 19: Upcoming events

Date Time	Event		Survey	Actual	Prior	Revised
03/04/2024 22:30	CPI Core YoY	Feb	0.48%	--	0.52%	--
03/04/2024 22:30	CPI NSA MoM	Feb	0.20%	--	0.02%	--
03/04/2024 22:30	CPI YoY	Feb	-0.80%	--	-1.11%	--
03/06/2024 03/13	Consumer Confidence Economic	Feb	--	--	56.9	--
03/06/2024 03/13	Consumer Confidence	Feb	--	--	62.9	--
03/08/2024 02:30	Foreign Reserves	Mar-01	--	--	\$222.4b	--
03/08/2024 02:30	Forward Contracts	Mar-01	--	--	\$29.5b	--
03/17/2024 03/24	Car Sales	Feb	--	--	54814	54587
03/24/2024 03/29	Customs Imports YoY	Feb	--	--	2.60%	--
03/24/2024 03/29	Customs Exports YoY	Feb	--	--	10.00%	--
03/24/2024 03/29	Customs Trade Balance	Feb	--	--	-\$2800m	--
03/25/2024 03/30	Mfg Production Index ISIC NSA YoY	Feb	--	--	-2.94%	--
03/25/2024 03/30	Capacity Utilization ISIC	Feb	--	--	59.43	--
03/29/2024 03:00	BoP Current Account Balance	Feb	--	--	-\$200m	-\$191m
03/29/2024 03:30	BoP Overall Balance	Feb	--	--	\$842m	--
03/29/2024 03:30	Exports	Feb	--	--	\$22012m	--
03/29/2024 03:30	Imports	Feb	--	--	\$23112m	--
03/29/2024 03:30	Exports YoY	Feb	--	--	7.20%	--
03/29/2024 03:30	Imports YoY	Feb	--	--	1.50%	--
03/29/2024 03:30	Trade Balance	Feb	--	--	-\$1100m	--
03/31/2024 20:30	S&P Global Thailand PMI Mfg	Mar	--	--	45.3	--
04/01/2024 03:30	Business Sentiment Index	Mar	--	--	48.8	--

Source: Bloomberg

Exhibit 20: Management trading

Company	Management	Securities	Transaction	Shares	Price (THB)	Action	Value (THBm)
Bangkok Dusit Med Serv (BDMS)	Poramaporn Prasartongosoth	Common Shares	3/1/2024	53,500,000	28.00	Buy	1,498.00
J.R.W. Utility (JR)	Jarun Wiwatjesadawut	Common Shares	3/1/2024	50,900	4.57	Buy	0.23
J.R.W. Utility (JR)	Teeranont Wiwatjesadawut	Common Shares	3/1/2024	25,900	4.53	Buy	0.12
Chayo Group (CHAYO)	Suksan Yasasin	Warrant	2/28/2024	1,308,800	0.72	Sell	0.94
Successmore Being (SCM)	Sirivat Amcharoen	Common Shares	3/1/2024	100,000	4.04	Sell	0.40
Successmore Being (SCM)	Suchart Thanathitiphan	Common Shares	3/1/2024	100,000	4.04	Buy	0.40
Zen Corp (ZEN)	Siruwat Chatchawan	Common Shares	3/1/2024	30,000	8.75	Sell	0.26
Siamese Asset (SA)	Sunanta Singsansern	Common Shares	3/1/2024	693,300	6.50	Buy	4.51
Simat Technologies (SIMAT)	Boonlerd lewpornchai	Common Shares	3/1/2024	250,000	1.62	Buy	0.41
D.T.C Enterprise (DTCENT)	Apisit Rujikeatkamjorn	Common Shares	2/29/2024	200,000	1.56	Buy	0.31
The One Enterprise (ONEE)	Takonkiet Viravan	Common Shares	2/28/2024	1,666,800	3.80	Buy	6.33
The One Enterprise (ONEE)	Takonkiet Viravan	Common Shares	2/28/2024	1,666,800	3.80	Buy	6.33
WHA Industrial Leasehold Real Estate Investment Trust (WHAIR)	Krailuck Asawachatroj	Warrant	2/29/2024	20,000	5.55	Buy	0.11
TMBThanachart Bank (TTB)	Chananyarak Petcharat	Common Shares	3/1/2024	200,000	1.86	Sell	0.37
T S Flour Mill (TMILL)	Preecha Attapiwat	Common Shares	3/1/2024	100,000	3.80	Buy	0.38
Thonburi Healthcare (THG)	Aasis Unnanuntana	Common Shares	3/1/2024	25,000	44.70	Sell	1.12
Namwiwat Medical Corporation (NAM)	Chinapat Visuttiapat	Common Shares	2/29/2024	45,800	5.45	Buy	0.25
Porn Prom Metal (PPM)	Nuntira Rittimontree	Common Shares	3/1/2024	5,000	2.56	Buy	0.01
Proud Real Estate (PROUD)	Pumpat Sinacharoen	Common Shares	2/28/2024	75,000	1.69	Sell	0.13
Proud Real Estate (PROUD)	Pumpat Sinacharoen	Common Shares	2/29/2024	100	1.69	Sell	0.00
Proud Real Estate (PROUD)	Pumpat Sinacharoen	Common Shares	3/1/2024	174,900	1.68	Sell	0.29
Peace and Living (PEACE)	Pisit Punjakunaporn	Common Shares	3/1/2024	27,000	3.19	Buy	0.09
PRTR Group (PRTR)	Risara Charoenpanich	Common Shares	3/1/2024	462,000	4.17	Buy	1.93
Malee Sampran Factory (MALEE)	Chaichat Boonyarat	Common Shares	3/1/2024	80,000	11.50	Buy	0.92
Malee Sampran Factory (MALEE)	Rajdev Narula	Common Shares	3/1/2024	200,000	11.30	Buy	2.26
Major Development (MJD)	Suriya Poolvorlaks	Common Shares	3/1/2024	79,900	1.22	Buy	0.10
Major Development (MJD)	Suriya Poolvorlaks	Common Shares	3/1/2024	169,700	1.23	Buy	0.21
Major Development (MJD)	Suriya Poolvorlaks	Common Shares	3/1/2024	193,700	1.24	Buy	0.24
Modernform Group (MODERN)	Yothin Nerngchamnong	Common Shares	3/1/2024	80,000	2.19	Buy	0.18
Warrix Sports (WARRIX)	Chinnawat Tantipongnant	Common Shares	3/1/2024	100,000	4.64	Buy	0.46
Warrix Sports (WARRIX)	Sa-Nga Tangchansiri	Common Shares	3/1/2024	50,000	4.66	Buy	0.23
Wice Logistics (WICE)	Chudet Kongsoonthorn	Common Shares	3/1/2024	125,000	6.15	Buy	0.77
Sikarin (SKR)	Suriyan Kojonroj	Common Shares	2/29/2024	40,000	10.00	Buy	0.40
Sabuy Technology (SABUY)	Saran Supaksaran	Common Shares	3/4/2024	100,000	4.92	Buy	0.49
Eastern Power Group (EP)	Yuth Chinpakkul	Common Shares	3/1/2024	5,500	2.66	Buy	0.01
ATP30 (ATP30)	Piya Techakul	Common Shares	2/29/2024	100,000	1.00	Buy	0.10
Advice IT Infinite (ADVICE)	Sanit Rangnoi	Common Shares	3/1/2024	10,000	4.20	Buy	0.04

Source: SEC

Exhibit 21: Upcoming XM [1/13]

Symbol	X-Date	Meeting Date	Agenda
AF	05/03/2024	24/04/2024	Omitted dividend payment
AKP	05/03/2024	24/04/2024	Omitted dividend payment,Changing The director(s)
ASIAN	05/03/2024	26/04/2024	Cash dividend payment,Changing The director(s)
BANPU	05/03/2024	01/04/2024	Cash dividend payment,Paid up capital reduction,Changing The director(s),The amendment of the authorized directors of the Company.
BBIK	05/03/2024	23/04/2024	Capital increase,Cash and stock dividend payment
BRRGIF	05/03/2024	-	Fund management,Financial position and performance,Appointment of auditors and audit costs
BUI	05/03/2024	19/04/2024	Capital increase,Cash and stock dividend payment
ICHI	05/03/2024	19/04/2024	Cash dividend payment,Changing The director(s)
IFS	05/03/2024	22/04/2024	Cash dividend payment
IHL	05/03/2024	22/04/2024	Omitted dividend payment
KTBSTMR	05/03/2024	-	Fund management,Financial position and performance,Appointment of auditors and audit costs
KUN	05/03/2024	24/04/2024	Omitted dividend payment,To consider and approve the election of the 1 new director. - To consider and approve amendment of the authority of directors who sign on behalf of the Company.
L&E	05/03/2024	24/04/2024	Cash dividend payment
MGI	05/03/2024	26/04/2024	Cash dividend payment
MINT	05/03/2024	25/04/2024	Cash dividend payment
NKI	05/03/2024	23/04/2024	Capital increase,Changing The director(s),Cash and stock dividend payment
PACO	05/03/2024	10/04/2024	Cash dividend payment,Changing The director(s)
SCN	05/03/2024	29/04/2024	Cash dividend payment
SIS	05/03/2024	26/04/2024	Cash dividend payment,Changing The director(s)
SNNP	05/03/2024	25/04/2024	Cash dividend payment,Changing The director(s)
SSF	05/03/2024	24/04/2024	Cash dividend payment
TAE	05/03/2024	25/04/2024	Omitted dividend payment,Changing The director(s)
TEAM	05/03/2024	24/04/2024	Cash dividend payment
TM	05/03/2024	19/04/2024	Cash dividend payment
TMT	05/03/2024	02/04/2024	Cash dividend payment,Changing The director(s)
ADB	06/03/2024	19/04/2024	Omitted dividend payment
ALLA	06/03/2024	26/04/2024	Cash dividend payment
ALLY	06/03/2024	-	Fund management,Financial position and performance,Appointment of auditors and audit costs
AP	06/03/2024	25/04/2024	Cash dividend payment,The issuance of debentures
ARROW	06/03/2024	24/04/2024	Cash dividend payment
ASN	06/03/2024	10/04/2024	Omitted dividend payment,Connected transaction
BA	06/03/2024	09/04/2024	Cash dividend payment
BBL	06/03/2024	11/04/2024	Cash dividend payment,Changing The director(s)
BCP	06/03/2024	11/04/2024	Cash dividend payment
BDMS	06/03/2024	05/04/2024	Cash dividend payment
BPP	06/03/2024	01/04/2024	Cash dividend payment,- To consider and approve the appointment of 2 additional directors from 10 to12 - To consider and approve the amendment of the amendment of the name and number of directors authorized to sign on behalf of the Company
CKP	06/03/2024	25/04/2024	Cash dividend payment
COCOCO	06/03/2024	03/04/2024	Cash dividend payment
DMT	06/03/2024	25/04/2024	Cash dividend payment
FSMART	06/03/2024	25/04/2024	Cash dividend payment
GAHREIT	06/03/2024	22/04/2024	Fund management,Financial position and performance,Appointment of auditors and audit costs,Distribution payment for the year 2023
GROREIT	06/03/2024	22/04/2024	Fund management,Financial position and performance,Appointment of auditors and audit costs,Distribution payment for the year 2023
ICN	06/03/2024	22/04/2024	Cash dividend payment
IT	06/03/2024	10/04/2024	Cash dividend payment
ITNS	06/03/2024	18/04/2024	Cash dividend payment
KGI	06/03/2024	10/04/2024	Cash dividend payment
KKP	06/03/2024	19/04/2024	Cash dividend payment,The issuance of debentures,To consider and approve the amendments to the Bank's Articles of Association
MAJOR	06/03/2024	02/04/2024	Cash dividend payment
MATCH	06/03/2024	24/04/2024	Omitted dividend payment
MEGA	06/03/2024	02/04/2024	Cash dividend payment

Source: SET

Exhibit 22: Upcoming XM [2/13]

Symbol	X-Date	Meeting Date	Agenda
MOSHI	06/03/2024	25/04/2024	Cash dividend payment
MST	06/03/2024	09/04/2024	Cash dividend payment,The issuance of debentures
NYT	06/03/2024	19/04/2024	Cash dividend payment,Changing The director(s)
OGC	06/03/2024	24/04/2024	Cash dividend payment
PAP	06/03/2024	11/04/2024	Omitted dividend payment
PTG	06/03/2024	26/04/2024	Cash dividend payment
SAFE	06/03/2024	26/04/2024	Cash dividend payment
SAMCO	06/03/2024	23/04/2024	Cash dividend payment
SAT	06/03/2024	29/04/2024	Cash dividend payment
SE-ED	06/03/2024	25/04/2024	Omitted dividend payment
SHR	06/03/2024	25/04/2024	Cash dividend payment
SKR	06/03/2024	24/04/2024	Cash dividend payment
SPALI	06/03/2024	23/04/2024	Cash dividend payment,The issuance of debentures
SPVI	06/03/2024	04/04/2024	Cash dividend payment
TCAP	06/03/2024	05/04/2024	Cash dividend payment
TEKA	06/03/2024	24/04/2024	Cash dividend payment
TFG	06/03/2024	23/04/2024	Cash dividend payment,Capital increase,The issuance of convertible securities
TPCS	06/03/2024	23/04/2024	Cash dividend payment,Changing The director(s),Amendment of the Company's Articles of Association
TPRIME	06/03/2024	26/04/2024	Cash dividend payment
TRUBB	06/03/2024	25/04/2024	Omitted dividend payment,Amendments of the Company's objectives - Changing the Company's Regulations in Clauses 23, 29, 31, 33, 34, 35, 37, 47 and add No. 61, 62
UKEM	06/03/2024	09/04/2024	Cash dividend payment
WORK	06/03/2024	05/04/2024	Cash dividend payment
YONG	06/03/2024	10/04/2024	Cash dividend payment
2S	07/03/2024	23/04/2024	Cash dividend payment
ACG	07/03/2024	24/04/2024	Cash dividend payment
AI	07/03/2024	04/04/2024	Cash dividend payment
AIE	07/03/2024	04/04/2024	Omitted dividend payment,Paid up capital reduction,Changing The director(s)
AMA	07/03/2024	23/04/2024	Cash dividend payment
AMATAV	07/03/2024	24/04/2024	Capital increase,Changing The director(s),Cash and stock dividend payment,Amendment of the Company's Memorandum of Association and Articles of Association
APURE	07/03/2024	26/04/2024	Omitted dividend payment
ARIP	07/03/2024	18/04/2024	Cash dividend payment
ASEFA	07/03/2024	25/04/2024	Cash dividend payment
ASP	07/03/2024	26/04/2024	Cash dividend payment
ATP30	07/03/2024	02/04/2024	Cash dividend payment
BAFS	07/03/2024	29/04/2024	Cash dividend payment
BAM	07/03/2024	22/04/2024	Cash dividend payment,The issuance of debentures,Changing The director(s)
BC	07/03/2024	23/04/2024	Capital increase,The issuance of convertible securities,Omitted dividend payment,Changing The director(s)
BEC	07/03/2024	26/04/2024	Cash dividend payment
BKD	07/03/2024	03/04/2024	Cash dividend payment
BKI	07/03/2024	19/04/2024	Cash dividend payment
BOFFICE	07/03/2024	26/04/2024	Fund management,Financial position and performance,Appointment of auditors and audit costs
BROCK	07/03/2024	09/04/2024	Omitted dividend payment
BSM	07/03/2024	25/04/2024	Omitted dividend payment
CHG	07/03/2024	26/04/2024	Cash dividend payment
COM7	07/03/2024	23/04/2024	Cash dividend payment
CPT	07/03/2024	24/04/2024	Cash dividend payment
CPW	07/03/2024	18/04/2024	Cash dividend payment
CTW	07/03/2024	25/04/2024	Omitted dividend payment
DELTA	07/03/2024	11/04/2024	Cash dividend payment
DOD	07/03/2024	25/04/2024	Omitted dividend payment,Changing The director(s)
ERW	07/03/2024	23/04/2024	Cash dividend payment,Changing The director(s)
ETE	07/03/2024	25/04/2024	Cash dividend payment
EVER	07/03/2024	26/04/2024	Omitted dividend payment

Source: SET

Exhibit 23: Upcoming XM [3/13]

Symbol	X-Date	Meeting Date	Agenda
FN	07/03/2024	24/04/2024	Omitted dividend payment
GBX	07/03/2024	19/04/2024	Cash dividend payment
GREEN	07/03/2024	25/04/2024	Omitted dividend payment
GYT	07/03/2024	23/04/2024	Cash dividend payment
III	07/03/2024	23/04/2024	Cash dividend payment, Paid up capital reduction
IVL	07/03/2024	25/04/2024	Cash dividend payment
JDF	07/03/2024	26/04/2024	Cash dividend payment
JPARK	07/03/2024	10/04/2024	Cash dividend payment
JR	07/03/2024	09/04/2024	Cash dividend payment
KK	07/03/2024	25/04/2024	Cash dividend payment
KKC	07/03/2024	24/04/2024	Omitted dividend payment
LDC	07/03/2024	29/04/2024	Cash dividend payment
LHFG	07/03/2024	22/04/2024	Cash dividend payment, Amendment of the Article of Association of the Company
LRH	07/03/2024	24/04/2024	Cash dividend payment
M	07/03/2024	26/04/2024	Cash dividend payment, Acquisition and disposition of assets / Acquisition or Disposition of Assets , Connected transaction
MALEE	07/03/2024	25/04/2024	Omitted dividend payment
MGT	07/03/2024	24/04/2024	Cash dividend payment
MONO	07/03/2024	25/04/2024	Omitted dividend payment
MOONG	07/03/2024	23/04/2024	Capital increase, Cash dividend payment, The issuance of convertible securities
MSC	07/03/2024	02/04/2024	Cash dividend payment, To consider and approve the amendments of the Company's articles of association.
NCAP	07/03/2024	22/04/2024	Omitted dividend payment
NEX	07/03/2024	26/04/2024	Omitted dividend payment
ORN	07/03/2024	25/04/2024	Cash dividend payment, The issuance of debentures
PCSGH	07/03/2024	30/04/2024	Cash dividend payment
PL	07/03/2024	25/04/2024	Cash dividend payment
POLY	07/03/2024	29/03/2024	Cash dividend payment
POST	07/03/2024	24/04/2024	Omitted dividend payment, Changing The director(s)
READY	07/03/2024	24/04/2024	Cash and stock dividend payment, Capital increase, To consider and approve the appointment of the Company's external auditor and the determination of audit fees for the year 2024., Changing The director(s)
RJH	07/03/2024	22/04/2024	Cash dividend payment
RPC	07/03/2024	23/04/2024	Cash dividend payment
SAF	07/03/2024	25/04/2024	Cash dividend payment
SICT	07/03/2024	24/04/2024	Capital increase, Cash dividend payment
SONIC	07/03/2024	26/04/2024	Cash dividend payment, Amendment of the company's articles of association
SR	07/03/2024	25/04/2024	Omitted dividend payment
SUN	07/03/2024	22/04/2024	Capital increase, Cash and stock dividend payment
SWC	07/03/2024	26/04/2024	Capital increase, Changing The director(s), Cash and stock dividend payment
THANA	07/03/2024	09/04/2024	Cash dividend payment, Changing The director(s)
TIGER	07/03/2024	05/04/2024	Omitted dividend payment, Changing The director(s)
TKN	07/03/2024	22/04/2024	Cash dividend payment
TMI	07/03/2024	26/04/2024	Cash dividend payment, Changing The director(s)
TNP	07/03/2024	25/04/2024	Cash dividend payment
TPCH	07/03/2024	24/04/2024	Cash dividend payment
TPS	07/03/2024	19/04/2024	Cash dividend payment
TRUE	07/03/2024	05/04/2024	Omitted dividend payment
TTW	07/03/2024	11/04/2024	Cash dividend payment
TVT	07/03/2024	26/04/2024	Omitted dividend payment
TWPC	07/03/2024	24/04/2024	Cash dividend payment, Changing The director(s)
UAC	07/03/2024	18/04/2024	Cash dividend payment, Paid up capital reduction, To consider and approve the Company's registered capital decrease from and amendment of the Company's Memorandum of Association No. 4 in accordance with the capital decrease.
UEC	07/03/2024	26/04/2024	Cash dividend payment, To consider and approve the additional purpose of the Company Certificate, Article 39 outlines safety, occupational health, and working environment services.
UPOIC	07/03/2024	24/04/2024	Cash dividend payment, Changing The director(s)
UVAN	07/03/2024	26/04/2024	Cash dividend payment

Source: SET

Exhibit 24: Upcoming XM [4/13]

Symbol	X-Date	Meeting Date	Agenda
WHAUP	07/03/2024	18/04/2024	Cash dividend payment
XO	07/03/2024	29/04/2024	Cash dividend payment
A	08/03/2024	18/04/2024	Omitted dividend payment
AAV	08/03/2024	19/04/2024	Omitted dividend payment
ALUCON	08/03/2024	23/04/2024	Cash dividend payment
ARIN	08/03/2024	19/04/2024	Capital increase,Omitted dividend payment
AU	08/03/2024	25/04/2024	Cash dividend payment
BSBM	08/03/2024	22/04/2024	Omitted dividend payment
CHOTI	08/03/2024	25/04/2024	Omitted dividend payment, the amendments to the Company's objectives
DDD	08/03/2024	11/04/2024	Omitted dividend payment
DTCENT	08/03/2024	22/04/2024	Capital increase,Cash and stock dividend payment
EA	08/03/2024	26/04/2024	The issuance of debentures,Cash dividend payment
FLOYD	08/03/2024	26/04/2024	Capital increase,Cash and stock dividend payment
FMT	08/03/2024	29/04/2024	Cash dividend payment
JUBILE	08/03/2024	23/04/2024	Cash dividend payment
MFC	08/03/2024	18/04/2024	Cash dividend payment,Changing The director(s)
MICRO	08/03/2024	22/04/2024	Omitted dividend payment
MTW	08/03/2024	09/04/2024	Omitted dividend payment,Capital increase,The issuance of convertible securities
NCH	08/03/2024	25/04/2024	Cash dividend payment
OHTL	08/03/2024	25/04/2024	Omitted dividend payment,Changing The director(s)
PORT	08/03/2024	24/04/2024	Omitted dividend payment
PR9	08/03/2024	23/04/2024	Cash dividend payment,Changing The director(s)
PRM	08/03/2024	26/04/2024	Cash dividend payment,To consider and approve the amendment to the Articles of Association of the Company.
PROS	08/03/2024	19/04/2024	Omitted dividend payment
PROUD	08/03/2024	24/04/2024	Omitted dividend payment
RBF	08/03/2024	26/04/2024	Cash dividend payment
SABINA	08/03/2024	25/04/2024	Cash dividend payment
SCM	08/03/2024	25/04/2024	Cash dividend payment
SINO	08/03/2024	24/04/2024	Cash dividend payment,To consider and approve the addition to the Company's objectives and the amendment of Clause 3 of the Company's Memorandum of Association.
SISB	08/03/2024	11/04/2024	Cash dividend payment
SITHAI	08/03/2024	25/04/2024	Cash dividend payment
TITLE	08/03/2024	19/04/2024	Omitted dividend payment
UOBKH	08/03/2024	26/04/2024	Cash dividend payment,Changing The director(s)
URBNPF	08/03/2024	-	Fund management,Financial position and performance,Appointment of auditors and audit costs
WHA	08/03/2024	25/04/2024	Cash dividend payment
ZEN	08/03/2024	25/04/2024	Cash dividend payment
ABM	11/03/2024	24/04/2024	Omitted dividend payment
ASW	11/03/2024	23/04/2024	Cash dividend payment,Capital increase
BSRC	11/03/2024	10/04/2024	Cash dividend payment,Acquisition and disposition of assets / Acquisition or Disposition of Assets ,The issuance of debentures,Changing The director(s)
BTNC	11/03/2024	10/04/2024	Omitted dividend payment
BVG	11/03/2024	25/04/2024	Cash dividend payment
CMC	11/03/2024	26/04/2024	Capital increase,Cash and stock dividend payment
CPALL	11/03/2024	26/04/2024	Cash dividend payment
CPR	11/03/2024	26/04/2024	Cash dividend payment
FTI	11/03/2024	18/04/2024	Cash dividend payment
GFC	11/03/2024	29/04/2024	Omitted dividend payment
IIG	11/03/2024	29/04/2024	Omitted dividend payment,Capital increase
INSET	11/03/2024	22/04/2024	Cash dividend payment
ITTHI	11/03/2024	23/04/2024	Omitted dividend payment,Amend company regulations -Edit the company objectives and and amend the memorandum of association
KCM	11/03/2024	26/04/2024	Omitted dividend payment
KUMWEL	11/03/2024	26/04/2024	Cash dividend payment,To consider and approve the amendment of the Company Objectives and Memorandum of Association No.3.

Source: SET

Exhibit 25: Upcoming XM [5/13]

Symbol	X-Date	Meeting Date	Agenda
LEO	11/03/2024	25/04/2024	Cash dividend payment
LPH	11/03/2024	22/04/2024	Cash dividend payment
MANRIN	11/03/2024	25/04/2024	Omitted dividend payment,Acquisition and disposition of assets / Acquisition or Disposition of Assets
MGC	11/03/2024	29/04/2024	Omitted dividend payment
MTI	11/03/2024	24/04/2024	Cash dividend payment,Changing The director(s)
NAM	11/03/2024	19/04/2024	Cash dividend payment
NOBLE	11/03/2024	25/04/2024	Cash dividend payment,Changing The director(s)
PAF	11/03/2024	23/04/2024	Cash dividend payment
PCC	11/03/2024	29/04/2024	Cash dividend payment
PG	11/03/2024	23/04/2024	Cash dividend payment
PHG	11/03/2024	10/04/2024	Cash dividend payment
PRIN	11/03/2024	26/04/2024	Omitted dividend payment
PROEN	11/03/2024	25/04/2024	Omitted dividend payment
PSG	11/03/2024	25/04/2024	Omitted dividend payment
SAM	11/03/2024	24/04/2024	Omitted dividend payment
SNP	11/03/2024	23/04/2024	Cash dividend payment,Paid up capital reduction
SORKON	11/03/2024	23/04/2024	Cash dividend payment,Cancel the Registered Capital Increment, Reducing Company Registered Capital, Amendment of Memorandum of Association, Cancel the Project of ESOP
SPA	11/03/2024	19/04/2024	Capital increase,Cash and stock dividend payment,the amendment to Article 4 of the company's Memorandum of Association to reflect the decrease and the increase of the Company's registered capital
SPC	11/03/2024	22/04/2024	Cash dividend payment
SPCG	11/03/2024	19/04/2024	Cash dividend payment,Paid up capital reduction,Decrease of the Company's Registered Capital
SPG	11/03/2024	11/04/2024	Cash dividend payment
STP	11/03/2024	09/04/2024	Cash dividend payment
SUTHA	11/03/2024	04/04/2024	Cash dividend payment
SVT	11/03/2024	23/04/2024	Cash dividend payment
SYMC	11/03/2024	19/04/2024	Cash dividend payment,To consider and approve the amendment to the Company's objectives and the amendment to Clause 3. of the Memorandum of Association to be in line with the amendment to the Company's objectives
TC	11/03/2024	25/04/2024	Cash dividend payment,Consider additional amendment of the Company's Articles of Association and amendment on the objectives of the Company
TEAMG	11/03/2024	25/04/2024	Omitted dividend payment,Capital increase,Connected transaction,Changing The director(s)
TISCO	11/03/2024	18/04/2024	Cash dividend payment,Changing The director(s)
TRP	11/03/2024	25/04/2024	Cash dividend payment
UTP	11/03/2024	25/04/2024	Cash dividend payment
WIJK	11/03/2024	22/04/2024	Cash dividend payment,Capital increase,The issuance of convertible securities
WPH	11/03/2024	24/04/2024	Capital increase,Cash and stock dividend payment
ZAA	11/03/2024	25/04/2024	Omitted dividend payment
7UP	12/03/2024	24/04/2024	Omitted dividend payment,To consider and approve the change of the company name, Securities abbreviation and The company seal, to consider amending of the Memorandum of Association and the regulations
A5	12/03/2024	26/04/2024	Cash dividend payment
AGE	12/03/2024	23/04/2024	Cash dividend payment
AJ	12/03/2024	30/04/2024	Omitted dividend payment,Capital increase
ALPHAX	12/03/2024	29/04/2024	Omitted dividend payment,To consider and approve the proposal to increase the number of Company directors from 9 people to 11 people.
AMATA	12/03/2024	26/04/2024	Cash dividend payment,Changing The director(s)
APCO	12/03/2024	22/04/2024	Cash dividend payment
APCS	12/03/2024	25/04/2024	Omitted dividend payment,Changing The director(s)
BEM	12/03/2024	10/04/2024	Cash dividend payment,To consider reviewing the prescription of prohibitions on acts constituting foreign dominance
BM	12/03/2024	22/04/2024	Cash dividend payment
CAZ	12/03/2024	22/04/2024	Cash dividend payment
CFRESH	12/03/2024	26/04/2024	Omitted dividend payment
CH	12/03/2024	29/04/2024	Cash dividend payment,Changing The director(s)
CHO	12/03/2024	29/04/2024	Omitted dividend payment,Changing The director(s)
CIVIL	12/03/2024	26/04/2024	Cash dividend payment,To acknowledge the Extending the use of proceeds period of the Utilization of Capital Increase from Initial Public Offering of the Company (IPO)
CM	12/03/2024	24/04/2024	Cash dividend payment
CPF	12/03/2024	24/04/2024	Omitted dividend payment

Source: SET

Exhibit 26: Upcoming XM [6/13]

Symbol	X-Date	Meeting Date	Agenda
CPH	12/03/2024	26/04/2024	Cash dividend payment
CRD	12/03/2024	26/04/2024	Omitted dividend payment
CV	12/03/2024	24/04/2024	Omitted dividend payment
DIMET	12/03/2024	10/04/2024	Capital increase,Omitted dividend payment
DREIT	12/03/2024	-	Fund management,Financial position and performance,Appointment of auditors and audit costs,Dividend Payment 2566
DTCI	12/03/2024	18/04/2024	Cash dividend payment
ECF	12/03/2024	25/04/2024	Omitted dividend payment
ECL	12/03/2024	24/04/2024	Cash dividend payment
EFORL	12/03/2024	10/04/2024	Omitted dividend payment,Changing The director(s)
EURO	12/03/2024	26/04/2024	Omitted dividend payment
FTE	12/03/2024	24/04/2024	Cash dividend payment
GABLE	12/03/2024	30/04/2024	Cash dividend payment
HMPRO	12/03/2024	10/04/2024	Cash dividend payment,Amendment to the Memorandum of Association
HPT	12/03/2024	24/04/2024	Cash dividend payment
HUMAN	12/03/2024	25/04/2024	Cash dividend payment
ICC	12/03/2024	22/04/2024	Capital increase,Cash and stock dividend payment,amendment of Clause 4 of the Memorandum of Association.
ILM	12/03/2024	26/04/2024	Cash dividend payment
JAK	12/03/2024	25/04/2024	Cash dividend payment,Changing The director(s)
KASET	12/03/2024	25/04/2024	Omitted dividend payment
KCG	12/03/2024	24/04/2024	Cash dividend payment
KWM	12/03/2024	25/04/2024	Cash dividend payment
MCA	12/03/2024	24/04/2024	Cash dividend payment,Changing The director(s)
MEB	12/03/2024	23/04/2024	Cash dividend payment
MUD	12/03/2024	23/04/2024	Capital increase,The issuance of debentures,Omitted dividend payment
NAT	12/03/2024	19/04/2024	Cash dividend payment
NCL	12/03/2024	19/04/2024	The issuance of debentures,Capital increase,Omitted dividend payment,Connected transaction
NDR	12/03/2024	29/03/2024	Omitted dividend payment
NEP	12/03/2024	24/04/2024	Omitted dividend payment
NFC	12/03/2024	29/04/2024	Omitted dividend payment
NVD	12/03/2024	25/04/2024	Cash dividend payment
PANEL	12/03/2024	24/04/2024	Cash dividend payment
PJW	12/03/2024	22/04/2024	Cash dividend payment
PLANB	12/03/2024	23/04/2024	Omitted dividend payment
PLUS	12/03/2024	26/04/2024	Cash dividend payment
PPM	12/03/2024	25/04/2024	Cash dividend payment,To consider the election of the new directors
PPS	12/03/2024	24/04/2024	Omitted dividend payment,Capital increase
PRTR	12/03/2024	25/04/2024	Cash dividend payment,Changing The director(s)
PSP	12/03/2024	23/04/2024	Cash dividend payment
QH	12/03/2024	19/04/2024	Cash dividend payment
RP	12/03/2024	30/04/2024	Omitted dividend payment
RPH	12/03/2024	22/04/2024	Cash dividend payment,Changing The director(s)
S	12/03/2024	26/04/2024	Cash dividend payment
SALEE	12/03/2024	29/04/2024	Cash dividend payment,The Amendment of the Company's Articles of Association
SCAP	12/03/2024	29/04/2024	Capital increase,Cash and stock dividend payment,The issuance of debentures
SCG	12/03/2024	18/04/2024	Cash dividend payment
SCI	12/03/2024	26/04/2024	Omitted dividend payment
SE	12/03/2024	29/04/2024	Cash dividend payment,Consider and approve the amendment of the objectives of the Company to be consistent with energy-related business operations.
SFT	12/03/2024	26/04/2024	Cash dividend payment
SKN	12/03/2024	22/04/2024	Cash dividend payment
SLP	12/03/2024	25/04/2024	Omitted dividend payment
SO	12/03/2024	24/04/2024	Cash dividend payment,Changing The director(s)
SPACK	12/03/2024	26/04/2024	Omitted dividend payment
SRS	12/03/2024	23/04/2024	Cash dividend payment

Source: SET

Exhibit 27: Upcoming XM [7/13]

Symbol	X-Date	Meeting Date	Agenda
TGPRO	12/03/2024	11/04/2024	Omitted dividend payment
THE	12/03/2024	25/04/2024	Omitted dividend payment
THRE	12/03/2024	26/04/2024	Omitted dividend payment
TIPH	12/03/2024	23/04/2024	Omitted dividend payment
TNDT	12/03/2024	26/04/2024	Omitted dividend payment
TPA	12/03/2024	24/04/2024	Cash dividend payment
TPBI	12/03/2024	27/04/2024	Cash dividend payment,Changing The director(s)
TPOLY	12/03/2024	24/04/2024	Omitted dividend payment
TQM	12/03/2024	24/04/2024	Cash dividend payment,To consider the election of directors in place of those retiring by rotation. To consider the remuneration of directors. To consider the appointment of auditors and determine the audit fee for the year 2024.
TTI	12/03/2024	26/04/2024	Cash dividend payment
TVDH	12/03/2024	30/04/2024	Omitted dividend payment,transfer of the share premium to compensate the deficit - Amend the objectives of the Company and amend the memorandum of association, section 3
VARO	12/03/2024	29/04/2024	Omitted dividend payment
VCOM	12/03/2024	25/04/2024	Cash dividend payment
VL	12/03/2024	19/04/2024	Cash dividend payment
WINDOW	12/03/2024	09/04/2024	Cash dividend payment
WINMED	12/03/2024	23/04/2024	Connected transaction,Cash dividend payment
WINNER	12/03/2024	24/04/2024	Cash dividend payment
24CS	13/03/2024	24/04/2024	Omitted dividend payment
AHC	13/03/2024	23/04/2024	Cash dividend payment
AKR	13/03/2024	25/04/2024	Cash dividend payment
ALT	13/03/2024	25/04/2024	Omitted dividend payment,Changing The director(s)
ANI	13/03/2024	22/04/2024	Cash dividend payment,Changing The director(s)
AS	13/03/2024	26/04/2024	Omitted dividend payment
AYUD	13/03/2024	29/04/2024	Cash dividend payment,Changing The director(s)
BAY	13/03/2024	25/04/2024	Cash dividend payment
BEAUTY	13/03/2024	25/04/2024	Omitted dividend payment
BEYOND	13/03/2024	23/04/2024	Omitted dividend payment,Changing The director(s)
BGRIM	13/03/2024	24/04/2024	Cash dividend payment,To approve the amendment to B.Grimm Power's Articles of Association
BH	13/03/2024	24/04/2024	Cash dividend payment
BJCHI	13/03/2024	22/04/2024	Cash dividend payment
BLC	13/03/2024	01/04/2024	Cash dividend payment
BROOK	13/03/2024	29/04/2024	Cash dividend payment,Capital increase
BRR	13/03/2024	22/04/2024	Cash dividend payment
BTG	13/03/2024	23/04/2024	Cash dividend payment
CENTEL	13/03/2024	29/04/2024	Cash dividend payment
CGD	13/03/2024	24/04/2024	Omitted dividend payment
CHARAN	13/03/2024	24/04/2024	Cash dividend payment
CHASE	13/03/2024	30/04/2024	Omitted dividend payment,Capital increase,The issuance of convertible securities,Relocation of Head Office
CHOW	13/03/2024	25/04/2024	Omitted dividend payment,Changing The director(s)
CI	13/03/2024	25/04/2024	Capital increase,Omitted dividend payment,The issuance of debentures
CIMBT	13/03/2024	19/04/2024	Omitted dividend payment,Changing The director(s)
CK	13/03/2024	17/04/2024	Cash dividend payment,Changing The director(s)
CNT	13/03/2024	24/04/2024	Omitted dividend payment,Capital increase,Changing The director(s)
CPL	13/03/2024	26/04/2024	Omitted dividend payment
CSP	13/03/2024	09/04/2024	Omitted dividend payment
D	13/03/2024	25/04/2024	Cash dividend payment
DCON	13/03/2024	23/04/2024	Cash dividend payment
DITTO	13/03/2024	25/04/2024	Cash dividend payment,Connected transaction,Changing The director(s)
EASTW	13/03/2024	30/04/2024	Cash dividend payment
EGCO	13/03/2024	12/04/2024	Cash dividend payment,Changing The director(s)
EP	13/03/2024	19/04/2024	Omitted dividend payment

Source: SET

Exhibit 28: Upcoming XM [8/13]

Symbol	X-Date	Meeting Date	Agenda
FORTH	13/03/2024	26/04/2024	Cash dividend payment
GUNKUL	13/03/2024	24/04/2024	Omitted dividend payment,Changing The director(s),The amendment to the Company's Articles of Association
HANA	13/03/2024	30/04/2024	Cash dividend payment
HL	13/03/2024	12/04/2024	Cash dividend payment,director and the Audit Committee -Chairman of the Audit Committee
HTECH	13/03/2024	23/04/2024	Cash dividend payment
INET	13/03/2024	25/04/2024	Capital increase,The issuance of convertible securities,Cash dividend payment,Adding Company's objective.
JCKH	13/03/2024	11/04/2024	Omitted dividend payment,Capital increase
JSP	13/03/2024	11/04/2024	Omitted dividend payment
KAMART	13/03/2024	26/04/2024	Capital increase,Cash and stock dividend payment
KBANK	13/03/2024	11/04/2024	Cash dividend payment,Changing The director(s)
KBS	13/03/2024	29/04/2024	Cash dividend payment,Changing The director(s),To consider and approve the amendment of Clause 3 (Objectives) of the Memorandum of Association of the Company To consider and approve the amendment to the Article of Association of the Company according
KIAT	13/03/2024	09/04/2024	Cash dividend payment
KISS	13/03/2024	22/04/2024	Cash dividend payment
KLINIQ	13/03/2024	03/04/2024	Cash dividend payment
KTB	13/03/2024	05/04/2024	Cash dividend payment
LH	13/03/2024	25/04/2024	Cash dividend payment,Amendment the company's objectives
MENA	13/03/2024	23/04/2024	Cash dividend payment,To consider and approve the amendment of the company's Articles of Association to be in line with the Public Limited Companies Act (No. 4) BE 2565 and the amendment of the Company Seal.
NATION	13/03/2024	19/04/2024	Omitted dividend payment,The issuance of debentures
NTSC	13/03/2024	25/04/2024	Cash dividend payment
NV	13/03/2024	24/04/2024	Omitted dividend payment
NWR	13/03/2024	05/04/2024	Omitted dividend payment
OSP	13/03/2024	24/04/2024	Cash dividend payment
PIMO	13/03/2024	25/04/2024	Cash dividend payment
PK	13/03/2024	25/04/2024	Omitted dividend payment
PMTA	13/03/2024	24/04/2024	Cash dividend payment
PREB	13/03/2024	25/04/2024	Cash dividend payment
PRI	13/03/2024	23/04/2024	Cash dividend payment,the amendment of the Company's Articles of Association
PRINC	13/03/2024	25/04/2024	Capital increase,Omitted dividend payment,Connected transaction,Acquisition and disposition of assets / Acquisition or Disposition of Assets ,Changing The director(s)
PRO	13/03/2024	26/04/2024	Omitted dividend payment
PSTC	13/03/2024	10/04/2024	Omitted dividend payment,Capital increase,The issuance of convertible securities
PTC	13/03/2024	25/04/2024	Cash dividend payment
RCL	13/03/2024	19/04/2024	Cash dividend payment
ROJNA	13/03/2024	25/04/2024	Cash dividend payment,Changing The director(s)
S11	13/03/2024	04/04/2024	The issuance of debentures,Omitted dividend payment
SA	13/03/2024	25/04/2024	Cash dividend payment
SAMART	13/03/2024	25/04/2024	Omitted dividend payment,To consider and approve the amendment of the Company's Article of Association.
SAMTEL	13/03/2024	25/04/2024	Cash dividend payment,To consider and approve the amendment of Articles of Association
SAV	13/03/2024	25/04/2024	Omitted dividend payment,To consider and approve the amendment of the Company's Article of Association.
SAWAD	13/03/2024	29/04/2024	Capital increase,Cash and stock dividend payment
SC	13/03/2024	24/04/2024	Cash dividend payment,The issuance of convertible securities
SCL	13/03/2024	24/04/2024	Cash dividend payment
SCP	13/03/2024	26/04/2024	Cash dividend payment
SELIC	13/03/2024	26/04/2024	Cash dividend payment,Decrease the of the Company's registered capital and the amendment of Clause 4 of the Memorandum of Association
SHANG	13/03/2024	26/04/2024	Cash dividend payment,To consider the appointment of a new director and the change of authority of directors
SM	13/03/2024	29/04/2024	Cash dividend payment, The amendment of the company's regulations. ,The issuance of debentures
SRICHA	13/03/2024	19/04/2024	Cash dividend payment
SSP	13/03/2024	26/04/2024	Cash dividend payment
SSSC	13/03/2024	30/04/2024	Cash dividend payment,Changing The director(s)
SST	13/03/2024	23/04/2024	Cash dividend payment,Capital increase,Connected transaction,The issuance of debentures
SUPER	13/03/2024	26/04/2024	Omitted dividend payment
SVOA	13/03/2024	11/04/2024	Cash dividend payment

Source: SET

Exhibit 29: Upcoming XM [9/13]

Symbol	X-Date	Meeting Date	Agenda
TCJ	13/03/2024	10/04/2024	Omitted dividend payment
TIDLOR	13/03/2024	18/04/2024	Capital increase,Cash and stock dividend payment,The issuance of debentures
TIF1	13/03/2024	09/04/2024	Conversion to Reit
TK	13/03/2024	25/04/2024	Cash dividend payment
TKT	13/03/2024	19/04/2024	Omitted dividend payment
TLI	13/03/2024	26/04/2024	Cash dividend payment
TMD	13/03/2024	25/04/2024	Cash dividend payment
TOA	13/03/2024	29/04/2024	Cash dividend payment
TOPP	13/03/2024	30/04/2024	Cash dividend payment
TPIPL	13/03/2024	26/04/2024	Cash dividend payment,Changing The director(s),To consider the appointment of the statutory auditors of the Company and to fix the auditing fee for the year 2024
TPIPP	13/03/2024	18/04/2024	Cash dividend payment,Changing The director(s),To consider the appointment of the statutory auditors of the Company and to fix the auditing fee for year 2024.
TRT	13/03/2024	22/04/2024	Cash dividend payment,Changing The director(s)
TSE	13/03/2024	29/04/2024	Cash dividend payment
TTCL	13/03/2024	11/04/2024	Cash dividend payment
TVO	13/03/2024	26/04/2024	Cash dividend payment
TWP	13/03/2024	29/04/2024	Omitted dividend payment,Amendment of the Company's Objectives and Memorandum of Association of the Company
TWZ	13/03/2024	19/04/2024	Capital increase,The issuance of convertible securities,Omitted dividend payment
UBA	13/03/2024	25/04/2024	Cash dividend payment
UMI	13/03/2024	30/04/2024	Cash dividend payment
VIBHA	13/03/2024	29/04/2024	Cash dividend payment
VRANDA	13/03/2024	26/04/2024	Omitted dividend payment
WARRIX	13/03/2024	26/04/2024	Cash dividend payment
WFX	13/03/2024	24/04/2024	Omitted dividend payment
ADVICE	14/03/2024	25/04/2024	Cash dividend payment,Changing The director(s)
AH	14/03/2024	26/04/2024	Cash dividend payment
AIRA	14/03/2024	29/04/2024	Omitted dividend payment
AJA	14/03/2024	24/04/2024	Omitted dividend payment
AMANAHA	14/03/2024	26/04/2024	Cash and stock dividend payment,Capital increase
AMR	14/03/2024	19/04/2024	Changing The director(s),Omitted dividend payment
AURA	14/03/2024	25/04/2024	Cash dividend payment,Changing The director(s)
AWC	14/03/2024	26/04/2024	Cash dividend payment,Connected transaction,Changing The director(s)
BCH	14/03/2024	24/04/2024	Cash dividend payment
BGC	14/03/2024	19/04/2024	Cash dividend payment
BIG	14/03/2024	25/04/2024	Cash dividend payment
BIS	14/03/2024	24/04/2024	Cash dividend payment
BLESS	14/03/2024	26/04/2024	Omitted dividend payment
BLISS	14/03/2024	24/04/2024	Omitted dividend payment
BR	14/03/2024	18/04/2024	Omitted dividend payment,Changing The director(s)
BRI	14/03/2024	24/04/2024	Cash dividend payment,Capital increase,To consider and approve the increase of the Company's registered Capital to support the allocation of Ordinary shares under a general mandate and amending the memorandum of association.
CCP	14/03/2024	29/04/2024	Cash dividend payment
COLOR	14/03/2024	26/04/2024	Cash dividend payment
CPI	14/03/2024	25/04/2024	Cash dividend payment,Changing The director(s),To consider and approve the amendment of the Company's Articles of Association.
CPN	14/03/2024	25/04/2024	Cash dividend payment
CSC	14/03/2024	26/04/2024	Cash dividend payment,To consider and approve the addition of the Company Objectives and amendment to the Memorandum of Association Clause 3. to be consistent with the addition of objectives.
CSS	14/03/2024	25/04/2024	Cash dividend payment
CWT	14/03/2024	19/04/2024	Omitted dividend payment
DEXON	14/03/2024	26/04/2024	-,Cash dividend payment
DPAINT	14/03/2024	25/04/2024	Omitted dividend payment
DV8	14/03/2024	26/04/2024	Omitted dividend payment
ESTAR	14/03/2024	30/04/2024	Omitted dividend payment
FPI	14/03/2024	25/04/2024	Cash dividend payment

Source: SET

Exhibit 30: Upcoming XM [10/13]

Symbol	X-Date	Meeting Date	Agenda
GENCO	14/03/2024	24/04/2024	Omitted dividend payment
GLOCON	14/03/2024	23/04/2024	Omitted dividend payment
GLORY	14/03/2024	25/04/2024	Omitted dividend payment
GRAND	14/03/2024	23/04/2024	Omitted dividend payment
ILINK	14/03/2024	24/04/2024	Cash dividend payment
IMH	14/03/2024	18/04/2024	Omitted dividend payment
IND	14/03/2024	25/04/2024	Cash dividend payment
IP	14/03/2024	26/04/2024	Capital increase,Cash and stock dividend payment
IRCP	14/03/2024	29/04/2024	Cash dividend payment,Changing The director(s)
ITEL	14/03/2024	24/04/2024	Cash dividend payment
JCT	14/03/2024	26/04/2024	Cash dividend payment
K	14/03/2024	29/04/2024	Omitted dividend payment,The issuance of convertible securities,Allocation of net profits as legal reserve
KCC	14/03/2024	03/04/2024	Cash dividend payment
KOOL	14/03/2024	23/04/2024	Cash dividend payment,To consider and approve the amendment of the Company's objectives and the amendment Clause 3 of the Company's Memorandum of Association
KWI	14/03/2024	09/04/2024	Omitted dividend payment
LALIN	14/03/2024	24/04/2024	Cash dividend payment
LOXLEY	14/03/2024	25/04/2024	Cash dividend payment,To consider and approve the amendments of the Articles of Association of the Company to be in compliance with the Public Limited Company Act, B.E. 2535 as amended. ,Changing The director(s)
MATI	14/03/2024	25/04/2024	Cash dividend payment
M-CHAI	14/03/2024	30/04/2024	Cash dividend payment
MCS	14/03/2024	09/04/2024	Cash dividend payment,Changing The director(s),To consider for approving additional amendments to the company's objectives and modifications to the company's Articles of Association, Section 3 (Objectives)
MFEC	14/03/2024	22/04/2024	Cash dividend payment
MITSIB	14/03/2024	10/04/2024	Capital increase,Omitted dividend payment
MJD	14/03/2024	25/04/2024	Omitted dividend payment
MODERN	14/03/2024	19/04/2024	Cash dividend payment
MVP	14/03/2024	25/04/2024	Omitted dividend payment
NER	14/03/2024	10/04/2024	Cash dividend payment,Capital increase,The issuance of convertible securities
NETBAY	14/03/2024	25/04/2024	Cash dividend payment,Changing The director(s),- Consider approval of amendments to the company's objectives and Memorandum of Association. - Consider approval of amendments to the company's Articles of Association.
ORI	14/03/2024	25/04/2024	Cash dividend payment
PEACE	14/03/2024	24/04/2024	Cash dividend payment
PF	14/03/2024	25/04/2024	Cash dividend payment,The issuance of debentures
PIN	14/03/2024	26/04/2024	Cash dividend payment,Changing The director(s)
PLANET	14/03/2024	30/04/2024	Omitted dividend payment,Capital increase
PLT	14/03/2024	18/04/2024	Capital increase,The issuance of convertible securities,Omitted dividend payment,Changing The director(s),Issuance and offering of Debt Instrument
PQS	14/03/2024	25/04/2024	Cash dividend payment,Changing The director(s)
PRECHA	14/03/2024	25/04/2024	Omitted dividend payment
RICHY	14/03/2024	26/04/2024	Omitted dividend payment,Capital increase,Changing The director(s)
ROH	14/03/2024	19/04/2024	Omitted dividend payment
S&J	14/03/2024	22/04/2024	Cash dividend payment,Changing The director(s)
SANKO	14/03/2024	29/04/2024	Cash dividend payment
SEAOIL	14/03/2024	24/04/2024	Cash dividend payment
SECURE	14/03/2024	24/04/2024	Cash dividend payment
SFLEX	14/03/2024	11/04/2024	Cash dividend payment
SGF	14/03/2024	29/04/2024	Omitted dividend payment
SGP	14/03/2024	25/04/2024	Cash dividend payment
SK	14/03/2024	26/04/2024	Cash dividend payment
SKY	14/03/2024	26/04/2024	Omitted dividend payment,the appropriation of net profits as legal reserve - the amendment of the Company' s Articles of Association - the amendment of the company's memorandum of association
SMD	14/03/2024	26/04/2024	Cash dividend payment
SSTRT	14/03/2024	-	Fund management,Financial position and performance,Appointment of auditors and audit costs
STECH	14/03/2024	25/04/2024	Omitted dividend payment
STHAI	14/03/2024	29/04/2024	Omitted dividend payment
SVR	14/03/2024	24/04/2024	Omitted dividend payment

Source: SET

Exhibit 31: Upcoming XM [11/13]

Symbol	X-Date	Meeting Date	Agenda
TACC	14/03/2024	26/04/2024	Cash dividend payment
TCMC	14/03/2024	26/04/2024	Omitted dividend payment
TH	14/03/2024	30/04/2024	Omitted dividend payment
TNITY	14/03/2024	25/04/2024	Omitted dividend payment
TNL	14/03/2024	22/04/2024	Cash dividend payment,Connected transaction,Changing The director(s)
TPP	14/03/2024	11/04/2024	Cash dividend payment,Changing The director(s)
TRITN	14/03/2024	24/04/2024	Omitted dividend payment
TRU	14/03/2024	25/04/2024	Cash dividend payment,Capital increase,Changing The director(s)
TURTLE	14/03/2024	24/04/2024	Omitted dividend payment,Changing The director(s)
TYCN	14/03/2024	25/04/2024	Omitted dividend payment
UBIS	14/03/2024	26/04/2024	Omitted dividend payment
UMS	14/03/2024	23/04/2024	Omitted dividend payment
UNIQ	14/03/2024	11/04/2024	Cash dividend payment
XPG	14/03/2024	26/04/2024	Omitted dividend payment,Changing The director(s)
ACE	15/03/2024	30/04/2024	Omitted dividend payment,To consider and approve the amendment of the Company's Articles of Association in accordance with the Public Limited Companies Act (No. 4) B.E. 2565
AIMCG	15/03/2024	26/04/2024	Fund management,Financial position and performance,Appointment of auditors and audit costs
AIMIRT	15/03/2024	25/04/2024	Fund management,Financial position and performance,Appointment of auditors and audit costs
ASAP	15/03/2024	29/04/2024	Omitted dividend payment
BGT	15/03/2024	29/04/2024	Omitted dividend payment
CEYE	15/03/2024	10/04/2024	Cash dividend payment
CHIC	15/03/2024	22/04/2024	Omitted dividend payment,Changing The director(s)
DEMCO	15/03/2024	29/04/2024	Omitted dividend payment
F&D	15/03/2024	29/04/2024	Omitted dividend payment
GSC	15/03/2024	29/04/2024	Omitted dividend payment,Amend the objectives of the company
HYDRO	15/03/2024	30/04/2024	Omitted dividend payment,Capital increase
MDX	15/03/2024	23/04/2024	Omitted dividend payment,Changing The director(s)
NRF	15/03/2024	24/04/2024	Omitted dividend payment,Capital increase,Appoint new director The amendment of the Articles of Association of the Company
NSL	15/03/2024	22/04/2024	Cash dividend payment
PDG	15/03/2024	24/04/2024	Cash dividend payment
PDJ	15/03/2024	24/04/2024	Cash dividend payment
RATCH	15/03/2024	23/04/2024	Cash dividend payment,Changing The director(s)
RSP	15/03/2024	18/04/2024	Cash dividend payment
SIAM	15/03/2024	29/04/2024	Cash dividend payment
SIRI	15/03/2024	30/04/2024	Capital increase,The issuance of convertible securities,Cash dividend payment
SKE	15/03/2024	26/04/2024	Omitted dividend payment
SPI	15/03/2024	22/04/2024	Cash dividend payment,Changing The director(s)
SUSCO	15/03/2024	25/04/2024	Cash dividend payment,Changing The director(s)
TAKUNI	15/03/2024	23/04/2024	Omitted dividend payment
TFI	15/03/2024	24/04/2024	Omitted dividend payment
TKC	15/03/2024	19/04/2024	Cash dividend payment,Changing The director(s),- the appropriation of net profits as legal reserve - the amendment of the Company' s Articles of Association - the amendment of the company's memorandum of association
TMC	15/03/2024	27/04/2024	Omitted dividend payment
TPL	15/03/2024	29/04/2024	Omitted dividend payment,Changing The director(s)
TQR	15/03/2024	22/04/2024	Cash dividend payment
TVH	15/03/2024	24/04/2024	Cash dividend payment
VNG	15/03/2024	24/04/2024	Cash dividend payment
W	15/03/2024	30/04/2024	Omitted dividend payment,Capital increase,The issuance of convertible securities
AKS	18/03/2024	30/04/2024	Omitted dividend payment
CMR	18/03/2024	29/04/2024	Cash dividend payment,Changing The director(s),Approval of amendments to the Company's Articles of Association.
EASON	18/03/2024	26/04/2024	Cash dividend payment
GCAP	18/03/2024	29/04/2024	Capital increase,The issuance of debentures,The issuance of convertible securities,Omitted dividend payment
HYDROGEN	18/03/2024	23/04/2024	-
META	18/03/2024	29/04/2024	Changing The director(s),Capital increase,Omitted dividend payment,The issuance of debentures

Source: SET

Exhibit 32: Upcoming XM [12/13]

Symbol	X-Date	Meeting Date	Agenda
NL	18/03/2024	24/04/2024	Cash dividend payment
PLAT	18/03/2024	19/04/2024	Omitted dividend payment
SJWD	18/03/2024	29/04/2024	Cash dividend payment
SRIPANWA	18/03/2024	-	Fund management,Financial position and performance,Appointment of auditors and audit costs
THG	18/03/2024	24/04/2024	Cash dividend payment,Changing The director(s)
TNR	18/03/2024	11/04/2024	Cash dividend payment
ANAN	19/03/2024	25/04/2024	Omitted dividend payment
BIOTEC	19/03/2024	29/04/2024	Omitted dividend payment
CCET	19/03/2024	30/04/2024	Cash dividend payment,Connected transaction
COMAN	19/03/2024	22/04/2024	Omitted dividend payment
FSX	19/03/2024	30/04/2024	Omitted dividend payment,Paid up capital reduction,The issuance of debentures
GRAMMY	19/03/2024	29/04/2024	Omitted dividend payment,Acquisition and disposition of assets / Acquisition or Disposition of Assets ,Changing The director(s)
HFT	19/03/2024	26/04/2024	Omitted dividend payment
MASTER	19/03/2024	23/04/2024	Capital increase,Cash and stock dividend payment
NTV	19/03/2024	25/04/2024	Cash dividend payment,Changing The director(s)
ONEE	19/03/2024	26/04/2024	Cash dividend payment,To acknowledge the change in use of Initial Public Offering (IPO) proceeds
PATO	19/03/2024	22/04/2024	Cash dividend payment,Changing The director(s)
PYLON	19/03/2024	29/04/2024	Cash dividend payment,Changing The director(s)
RML	19/03/2024	22/04/2024	Omitted dividend payment
RT	19/03/2024	29/04/2024	Capital increase,The issuance of debentures,Omitted dividend payment
SAFARI	19/03/2024	29/04/2024	Omitted dividend payment
SEAFCO	19/03/2024	29/04/2024	Capital increase,Cash and stock dividend payment
SENX	19/03/2024	24/04/2024	Cash dividend payment,Acquisition and disposition of assets / Acquisition or Disposition of Assets ,Connected transaction
SIMAT	19/03/2024	26/04/2024	Omitted dividend payment,the amendment of the objectives of the Company and its memorandum of association.
SQ	19/03/2024	18/04/2024	Cash dividend payment,The issuance of debentures
SYNEX	19/03/2024	23/04/2024	Cash dividend payment
TBN	19/03/2024	29/04/2024	Cash dividend payment,To consider and approve the change in the purpose of utilizing initial public offering (IPO) proceeds
TEGH	19/03/2024	26/04/2024	Cash dividend payment
TGH	19/03/2024	26/04/2024	Capital increase,Omitted dividend payment,To consider and approve the amendment of the Company's Seal and Articles of Association Article 50 to be aligned with the change of the Company's seal.
TKS	19/03/2024	23/04/2024	Cash dividend payment
TMILL	19/03/2024	25/04/2024	Cash dividend payment,Changing The director(s)
TSI	19/03/2024	23/04/2024	Changing The director(s),Omitted dividend payment
UBE	19/03/2024	30/04/2024	Cash dividend payment,Changing The director(s)
WGE	19/03/2024	30/04/2024	Omitted dividend payment,Capital increase
BJC	20/03/2024	23/04/2024	Cash dividend payment
KCAR	20/03/2024	25/04/2024	Cash dividend payment
SMT	20/03/2024	25/04/2024	Cash dividend payment
TPAC	20/03/2024	29/04/2024	Cash dividend payment
TSTE	20/03/2024	25/04/2024	Cash dividend payment,Changing The director(s),Other matters (If any)
YGG	20/03/2024	23/04/2024	Omitted dividend payment
AMC	21/03/2024	23/04/2024	Cash dividend payment
APP	21/03/2024	23/04/2024	Cash dividend payment
B52	21/03/2024	23/04/2024	Capital increase,Omitted dividend payment
CMAN	21/03/2024	26/04/2024	Cash dividend payment
CPNREIT	21/03/2024	22/04/2024	Fund management,Financial position and performance,Appointment of auditors and audit costs
EKH	21/03/2024	26/04/2024	Capital increase,Cash and stock dividend payment
KGEN	21/03/2024	25/04/2024	Omitted dividend payment
NEW	21/03/2024	29/04/2024	Cash dividend payment,Changing The director(s)
PLE	21/03/2024	26/04/2024	Omitted dividend payment
SENA	21/03/2024	26/04/2024	Cash dividend payment,Connected transaction,Acquisition and disposition of assets / Acquisition or Disposition of Assets
SLM	21/03/2024	29/04/2024	Capital increase,Omitted dividend payment

Source: SET

Exhibit 33: Upcoming XM [13/13]

Symbol	X-Date	Meeting Date	Agenda
TAN	21/03/2024	30/04/2024	Cash dividend payment
DHOUSE	22/03/2024	26/04/2024	Omitted dividend payment
DUSIT	22/03/2024	29/04/2024	Omitted dividend payment
KJL	22/03/2024	26/04/2024	Cash dividend payment
LST	22/03/2024	26/04/2024	Cash dividend payment
CMO	25/03/2024	25/04/2024	Omitted dividend payment
CRC	25/03/2024	25/04/2024	Cash dividend payment,Connected transaction,Changing The director(s),The amendment of the Articles of Association
EE	25/03/2024	24/04/2024	Omitted dividend payment
HARN	25/03/2024	29/04/2024	Cash dividend payment,Acquisition and disposition of assets / Acquisition or Disposition of Assets ,Connected transaction
PRIME	25/03/2024	30/04/2024	Capital increase,Omitted dividend payment,Changing The director(s)
SMIT	25/03/2024	25/04/2024	Cash dividend payment
MORE	26/03/2024	19/04/2024	Omitted dividend payment
VIH	26/03/2024	26/04/2024	Cash dividend payment
BTW	27/03/2024	23/04/2024	Omitted dividend payment
KTMS	27/03/2024	26/04/2024	Cash dividend payment
PERM	27/03/2024	25/04/2024	Omitted dividend payment
SSS	27/03/2024	26/04/2024	Omitted dividend payment
TRC	27/03/2024	29/04/2024	Omitted dividend payment
UREKA	27/03/2024	29/04/2024	Omitted dividend payment,Reduce the registered capital of the company
WHART	27/03/2024	-	Fund management,Financial position and performance,Appointment of auditors and audit costs
WORLD	27/03/2024	26/04/2024	Omitted dividend payment
HEALTH	28/03/2024	29/04/2024	Omitted dividend payment,Capital increase
PTECH	28/03/2024	26/04/2024	Omitted dividend payment,The issuance of debentures
RS	28/03/2024	30/04/2024	Omitted dividend payment
SAAM	28/03/2024	24/04/2024	Omitted dividend payment
SABUY	28/03/2024	29/04/2024	Omitted dividend payment
SBNEXT	28/03/2024	26/04/2024	Omitted dividend payment
THMUI	28/03/2024	23/04/2024	Omitted dividend payment
TRV	28/03/2024	26/04/2024	Omitted dividend payment
FVC	29/03/2024	30/04/2024	Cash dividend payment
CSR	03/04/2024	26/04/2024	Cash dividend payment,Changing The director(s)
NEWS	03/04/2024	30/04/2024	Omitted dividend payment
AQUA	04/04/2024	30/04/2024	Omitted dividend payment,Changing The director(s)
NOVA	04/04/2024	30/04/2024	Omitted dividend payment
CIG	10/04/2024	30/04/2024	Omitted dividend payment

Source: SET

Exhibit 34: Upcoming XR

Symbol	X-Date	Announce Date	Rights for	Subscription Price	Unit	Subscription Ratio (Holding:New)	Subscription Period	Allotted Shares (Shares)
TWZ	13/03/2024	28/02/2024	Warrants	-	Baht	10/01/2000	-	2500000000
TWZ	13/03/2024	28/02/2024	Warrants	-	Baht	10/01/2000	-	2500000000
SOLAR	14/03/2024	21/03/2023	Common	0.8	Baht	11 : 2	11/04/2024 - 22/04/2024	217649000
RT	19/03/2024	28/02/2024	Common	0.55	Baht	4 : 1	15/05/2024 - 21/05/2024	275470750
RML	10/04/2024	12/02/2024	Common	0.42	Baht	9.38 : 1	-	714285715
MITSIB	22/04/2024	27/02/2024	Common	0.7	Baht	1 : 1	-	787892023
MTW	22/04/2024	23/02/2024	Warrants	-	Baht	2 : 1	-	337000000
NER	22/04/2024	29/02/2024	Warrants	-	Baht	6 : 1	-	307964958
BC	30/04/2024	27/02/2024	Warrants	-	Baht	10 : 1	-	57048574
TFG	30/04/2024	21/02/2024	Warrants	-	Baht	10 : 1	-	581081852
WIIK	02/05/2024	23/02/2024	Warrants	-	Baht	3 : 1	-	279227687
INET	03/05/2024	28/02/2024	Warrants	-	Baht	5 : 1	-	100193441
AJ	08/05/2024	28/02/2024	Common	5.869	Baht	5.1765 : 1	05/06/2024 - 11/06/2024	85000000
CHASE	23/05/2024	28/02/2024	Warrants	-	Baht	10 : 1	-	198544180
K	05/06/2024	27/02/2024	Warrants	-	Baht	14 : 1	-	39961206

Source: SET

Exhibit 35: Upcoming XD [1/10]

Symbol	X-Date	Dividend (per Share)	Unit	Operation Period	Source of Dividend	Payment Date	Price	Div Yield	Par
BRRGIF	5/3/2024	0.17767	Baht	01/10/2023 - 31/12/2023	Both	21/3/2024	3.96	4.5%	7.18
FUTUREPF	5/3/2024	0.29994	Baht	01/10/2023 - 31/12/2023	Both	20/3/2024	11.70	2.6%	9.7044
ICHI	5/3/2024	0.5	Baht	01/10/2023 - 31/12/2023	Both	10/5/2024	18.50	2.7%	1
IFS	5/3/2024	0.168	Baht	01/01/2023 - 31/12/2023	NP	15/5/2024	2.90	5.8%	1
KTBSTMR	5/3/2024	0.1765	Baht	01/10/2023 - 31/12/2023	Both	21/3/2024	6.40	2.8%	10
MGI	5/3/2024	0.15	Baht	01/01/2023 - 31/12/2023	NP	20/5/2024	48.25	0.3%	0.5
NKI	5/3/2024	37 : 1 Share	-	-	RE	20/5/2024	28.75	-	10
NKI	5/3/2024	1.5	Baht	-	RE	20/5/2024	28.75	5.2%	10
NVDA80X	5/3/2024	-	Baht	-	-	29/4/2024	-	-	-
SIS	5/3/2024	1.05	Baht	01/01/2023 - 31/12/2023	NP	15/5/2024	23.50	4.5%	1
SUPEREIF	5/3/2024	0.08841	Baht	01/10/2023 - 31/12/2023	Both	21/3/2024	6.85	1.3%	9.78
TEAM	5/3/2024	0.15	Baht	01/01/2023 - 31/12/2023	NP	21/5/2024	4.32	3.5%	1
WHART	5/3/2024	0.13	Baht	01/11/2023 - 31/12/2023	Both	22/3/2024	9.85	1.3%	9.0241
BA	6/3/2024	0.5	Baht	01/01/2023 - 31/12/2023	NP	23/4/2024	16.20	3.1%	1
BCP	6/3/2024	1.5	Baht	-	RE	24/4/2024	44.00	3.4%	1
BDMS	6/3/2024	0.35	Baht	01/01/2023 - 31/12/2023	Both	22/4/2024	27.75	1.3%	0.1
B-WORK	6/3/2024	0.227466	Baht	-	RE	22/3/2024	4.62	4.9%	9.7107
FSMART	6/3/2024	0.18	Baht	01/07/2023 - 31/12/2023	NP	8/5/2024	6.50	2.8%	0.5
GAHREIT	6/3/2024	0.31	Baht	01/07/2023 - 31/12/2023	NP	22/3/2024	7.30	4.2%	10
GROREIT	6/3/2024	0.28	Baht	01/07/2023 - 31/12/2023	NP	22/3/2024	9.05	3.1%	10
HFT	6/3/2024	0.3	Baht	-	RE	20/3/2024	4.54	6.6%	1
ICN	6/3/2024	0.08	Baht	01/01/2023 - 31/12/2023	NP	20/5/2024	2.68	3.0%	0.5
ITNS	6/3/2024	0.124	Baht	01/01/2023 - 31/12/2023	NP	14/5/2024	2.60	4.8%	1
MEGA	6/3/2024	0.8	Baht	01/01/2023 - 31/12/2023	Both	22/4/2024	42.25	1.9%	0.5
MST	6/3/2024	0.11	Baht	01/01/2023 - 31/12/2023	NP	26/4/2024	10.40	1.1%	5
OGC	6/3/2024	0.57	Baht	01/01/2023 - 31/12/2023	NP	16/5/2024	23.80	2.4%	10
PTG	6/3/2024	0.35	Baht	01/01/2023 - 31/12/2023	Both	17/5/2024	9.10	3.8%	1
SAT	6/3/2024	1.22	Baht	01/01/2023 - 31/12/2023	NP	8/5/2024	18.20	6.7%	1
SHR	6/3/2024	0.015	Baht	01/01/2023 - 31/12/2023	NP	10/5/2024	2.36	0.6%	5
SPVI	6/3/2024	0.145	Baht	01/01/2023 - 31/12/2023	NP	25/4/2024	3.20	4.5%	0.5
TEKA	6/3/2024	0.105	Baht	01/01/2023 - 31/12/2023	NP	20/5/2024	2.18	4.8%	1
TPRIME	6/3/2024	0.1071	Baht	01/01/2023 - 31/12/2023	NP	25/3/2024	6.40	1.7%	8.5192
WORK	6/3/2024	0.09	Baht	01/07/2023 - 31/12/2023	NP	3/5/2024	9.85	0.9%	1
YONG	6/3/2024	0.08	Baht	01/01/2023 - 31/12/2023	NP	7/5/2024	2.12	3.8%	0.5
2S	7/3/2024	0.12	Baht	01/07/2023 - 31/12/2023	Both	21/5/2024	3.10	3.9%	1
AI	7/3/2024	0.1	Baht	-	RE	3/5/2024	4.34	2.3%	1
ALLY	7/3/2024	0.163	Baht	01/10/2023 - 31/12/2023	Both	29/3/2024	5.90	2.8%	9.7996
AMA	7/3/2024	0.25	Baht	01/01/2023 - 31/12/2023	Both	17/5/2024	4.80	5.2%	0.5
APURE	7/3/2024	0.15	Baht	01/10/2023 - 31/12/2023	Both	22/3/2024	4.46	3.4%	0.7
ARIP	7/3/2024	0.0215	Baht	01/01/2023 - 31/12/2023	NP	30/4/2024	0.74	2.9%	0.25
ASP	7/3/2024	0.1	Baht	01/07/2023 - 31/12/2023	NP	17/5/2024	2.82	3.5%	1
BKD	7/3/2024	0.05	Baht	01/01/2023 - 31/12/2023	NP	23/4/2024	1.50	3.3%	0.5
BKI	7/3/2024	5.5	Baht	01/01/2023 - 31/12/2023	NP	3/5/2024	318.00	1.7%	10
BKNG80X	7/3/2024	-	Baht	-	-	30/4/2024	-	-	-
BOFFICE	7/3/2024	0.1607	Baht	01/10/2023 - 31/12/2023	Both	28/3/2024	5.05	3.2%	8.7736
COM7	7/3/2024	0.7	Baht	01/01/2023 - 31/12/2023	NP	10/5/2024	19.90	3.5%	0.25
CPT	7/3/2024	0.025	Baht	01/01/2023 - 31/12/2023	NP	24/5/2024	0.68	3.7%	0.5
CPW	7/3/2024	0.14	Baht	01/01/2023 - 31/12/2023	NP	8/5/2024	2.36	5.9%	0.5
DELTA	7/3/2024	0.45	Baht	01/01/2023 - 31/12/2023	NP	25/4/2024	67.00	0.7%	0.1
ERW	7/3/2024	0.07	Baht	01/01/2023 - 31/12/2023	NP	21/5/2024	4.66	1.5%	1
ETE	7/3/2024	0.03	Baht	01/01/2023 - 31/12/2023	NP	20/5/2024	1.19	2.5%	0.5
GBX	7/3/2024	0.055	Baht	01/01/2023 - 31/12/2023	Both	10/5/2024	0.78	7.1%	1
JR	7/3/2024	0.04	Baht	01/01/2023 - 31/12/2023	NP	30/4/2024	4.56	0.9%	0.5
KK	7/3/2024	0.015	Baht	-	RE	17/5/2024	1.95	0.8%	0.5

Source: SET

Exhibit 36: Upcoming XD [2/10]

Symbol	X-Date	Dividend (per Share)	Unit	Operation Period	Source of Dividend	Payment Date	Price	Div Yield	Par
LDC	7/3/2024	0.011	Baht	01/01/2023 - 31/12/2023	NP	27/5/2024	0.68	1.6%	0.25
MSC	7/3/2024	0.5	Baht	01/01/2023 - 31/12/2023	NP	24/4/2024	8.80	5.7%	1
POLY	7/3/2024	0.29	Baht	01/01/2023 - 31/12/2023	Both	17/4/2024	7.90	3.7%	1
READY	7/3/2024	5 : 1 Share	-	01/01/2023 - 31/12/2023	NP	21/5/2024	12.50	-	0.5
READY	7/3/2024	0.2	Baht	01/01/2023 - 31/12/2023	NP	21/5/2024	12.50	1.6%	0.5
RJH	7/3/2024	0.25	Baht	01/01/2023 - 31/12/2023	NP	20/5/2024	26.25	1.0%	1
SAF	7/3/2024	0.01	Baht	01/01/2023 - 31/12/2023	Both	24/5/2024	0.83	1.2%	0.5
SONIC	7/3/2024	0.05	Baht	01/01/2023 - 31/12/2023	NP	24/5/2024	1.72	2.9%	0.5
TKN	7/3/2024	0.15	Baht	01/10/2023 - 31/12/2023	NP	7/5/2024	11.30	1.3%	0.25
TMI	7/3/2024	0.03	Baht	01/01/2023 - 31/12/2023	NP	8/5/2024	1.15	2.6%	0.25
TNP	7/3/2024	0.045	Baht	01/07/2023 - 31/12/2023	NP	24/5/2024	3.12	1.4%	0.25
TTW	7/3/2024	0.3	Baht	01/07/2023 - 31/12/2023	NP	25/4/2024	9.45	3.2%	1
UAC	7/3/2024	0.1	Baht	01/01/2023 - 31/12/2023	NP	29/4/2024	3.64	2.7%	0.5
UEC	7/3/2024	0.1	Baht	01/07/2023 - 31/12/2023	NP	20/5/2024	1.72	5.8%	0.25
UPOIC	7/3/2024	0.3	Baht	01/01/2023 - 31/12/2023	NP	21/5/2024	6.30	4.8%	1
UVAN	7/3/2024	0.45	Baht	01/01/2023 - 31/12/2023	NP	24/5/2024	8.65	5.2%	0.5
XO	7/3/2024	0.53	Baht	01/01/2023 - 31/12/2023	NP	15/5/2024	25.00	2.1%	0.5
EA	8/3/2024	0.3	Baht	-	RE	24/5/2024	34.25	0.9%	0.1
FMT	8/3/2024	2.625	Baht	-	RE	28/5/2024	37.00	7.1%	10
NCH	8/3/2024	0.05	Baht	01/01/2023 - 31/12/2023	NP	20/5/2024	1.02	4.9%	1
SCM	8/3/2024	0.05	Baht	01/07/2023 - 31/12/2023	NP	23/5/2024	3.92	1.3%	0.5
SISB	8/3/2024	0.31	Baht	01/01/2023 - 31/12/2023	NP	2/5/2024	42.00	0.7%	0.5
UOBKH	8/3/2024	0.04	Baht	01/01/2023 - 31/12/2023	NP	24/5/2024	4.94	0.8%	1
ZEN	8/3/2024	0.3	Baht	01/01/2023 - 31/12/2023	Both	15/5/2024	9.00	3.3%	1
AIMCG	11/3/2024	0.0627	Baht	-	RE	28/3/2024	3.68	1.7%	9.8
AIMIRT	11/3/2024	0.215	Baht	01/10/2023 - 31/12/2023	NP	28/3/2024	10.70	2.0%	10
BSRC	11/3/2024	0.25	Baht	01/01/2023 - 31/12/2023	NP	9/5/2024	9.80	2.6%	4.9338
BVG	11/3/2024	0.049	Baht	01/07/2023 - 31/12/2023	NP	15/5/2024	4.26	1.2%	0.5
CMC	11/3/2024	30 : 1 Share	-	-	RE	24/5/2024	1.19	-	1
CMC	11/3/2024	0.00372	Baht	-	RE	24/5/2024	1.19	0.3%	1
FTI	11/3/2024	0.04	Baht	01/01/2023 - 31/12/2023	NP	15/5/2024	2.14	1.9%	1
GFC	11/3/2024	0.13	Baht	01/10/2023 - 31/12/2023	Both	25/3/2024	10.70	1.2%	0.5
INSET	11/3/2024	0.05	Baht	01/07/2023 - 31/12/2023	NP	16/5/2024	2.38	2.1%	0.5
LEO	11/3/2024	0.16	Baht	01/01/2023 - 31/12/2023	NP	14/5/2024	4.62	3.5%	0.5
LHHOTEL	11/3/2024	0.27	Baht	16/09/2023 - 31/12/2023	NP	28/3/2024	12.00	2.3%	10
LHPF	11/3/2024	0.08	Baht	01/10/2023 - 31/12/2023	NP	28/3/2024	6.10	1.3%	10
LHSC	11/3/2024	0.205	Baht	01/11/2023 - 31/12/2023	NP	28/3/2024	9.85	2.1%	10.2
MTI	11/3/2024	5	Baht	01/01/2023 - 31/12/2023	NP	14/5/2024	113.50	4.4%	10
NAM	11/3/2024	0.09	Baht	01/01/2023 - 31/12/2023	NP	17/5/2024	5.35	1.7%	0.5
QHHR	11/3/2024	0.151	Baht	01/10/2023 - 31/12/2023	Both	28/3/2024	6.70	2.3%	10
QHPF	11/3/2024	0.12	Baht	01/11/2023 - 31/12/2023	NP	28/3/2024	5.50	2.2%	9.8659
SNP	11/3/2024	0.75	Baht	01/07/2023 - 31/12/2023	Both	13/5/2024	15.80	4.7%	1
SPCG	11/3/2024	0.65	Baht	01/07/2023 - 31/12/2023	Both	17/5/2024	12.30	5.3%	1
SPG	11/3/2024	0.8	Baht	-	RE	9/5/2024	15.70	5.1%	1
SVT	11/3/2024	0.035	Baht	01/01/2023 - 31/12/2023	NP	20/5/2024	1.88	1.9%	1
SYMC	11/3/2024	0.1459	Baht	01/01/2023 - 31/12/2023	NP	16/5/2024	7.30	2.0%	1
UTP	11/3/2024	0.48	Baht	01/01/2023 - 31/12/2023	Both	24/5/2024	11.70	4.1%	1
WPH	11/3/2024	50 : 1 Share	-	01/01/2023 - 31/12/2023	NP	21/5/2024	6.75	-	0.5
WPH	11/3/2024	0.1	Baht	01/01/2023 - 31/12/2023	NP	21/5/2024	6.75	1.5%	0.5
AGE	12/3/2024	0.2	Baht	01/01/2023 - 31/12/2023	NP	15/5/2024	2.20	9.1%	0.5
BEM	12/3/2024	0.14	Baht	01/01/2023 - 31/12/2023	NP	3/5/2024	8.05	1.7%	1
BM	12/3/2024	0.069	Baht	01/01/2023 - 31/12/2023	NP	16/5/2024	2.90	2.4%	0.5
CAZ	12/3/2024	0.2114	Baht	01/01/2023 - 31/12/2023	NP	20/5/2024	3.72	5.7%	0.5
CPH	12/3/2024	0.5	Baht	01/01/2023 - 31/12/2023	NP	15/5/2024	13.60	3.7%	10

Source: SET

Exhibit 37: Upcoming XD [3/10]

Symbol	X-Date	Dividend (per Share)	Unit	Operation Period	Source of Dividend	Payment Date	Price	Div Yield	Par
DREIT	12/3/2024	0.1975	Baht	01/07/2023 - 31/12/2023	NP	29/3/2024	5.15	3.8%	8.7163
ECL	12/3/2024	0.02	Baht	01/01/2023 - 31/12/2023	NP	16/5/2024	1.46	1.4%	1
JAK	12/3/2024	0.05	Baht	01/01/2023 - 31/12/2023	NP	15/5/2024	1.28	3.9%	1
NVD	12/3/2024	0.026	Baht	01/01/2023 - 31/12/2023	NP	21/5/2024	1.87	1.4%	1
PANEL	12/3/2024	0.04	Baht	01/01/2023 - 31/12/2023	NP	15/5/2024	2.72	1.5%	0.5
PLUS	12/3/2024	0.12	Baht	01/01/2023 - 31/12/2023	NP	17/5/2024	6.55	1.8%	0.5
PRTR	12/3/2024	0.15	Baht	01/01/2023 - 31/12/2023	NP	23/5/2024	4.00	3.8%	0.5
PSP	12/3/2024	0.15	Baht	-	RE	20/5/2024	5.30	2.8%	1
S	12/3/2024	0.015	Baht	01/01/2023 - 31/12/2023	NP	15/5/2024	0.83	1.8%	1
SE	12/3/2024	0.026493	Baht	01/01/2023 - 31/12/2023	NP	23/5/2024	0.88	3.0%	0.5
SFT	12/3/2024	0.0455	Baht	01/01/2023 - 31/12/2023	NP	23/5/2024	4.00	1.1%	0.5
SKN	12/3/2024	0.21	Baht	01/01/2023 - 31/12/2023	NP	17/5/2024	4.66	4.5%	1
SRIPANWA	12/3/2024	0.1792	Baht	01/01/2023 - 31/12/2023	Both	28/3/2024	4.88	3.7%	11.1004
TQM	12/3/2024	0.5	Baht	01/01/2023 - 31/12/2023	Both	10/5/2024	26.50	1.9%	0.5
TTI	12/3/2024	0.5	Baht	-	RE	24/5/2024	25.50	2.0%	10
VCOM	12/3/2024	0.18	Baht	01/01/2023 - 31/12/2023	Both	13/5/2024	3.48	5.2%	0.5
VL	12/3/2024	0.025	Baht	-	RE	17/5/2024	1.07	2.3%	0.5
WINMED	12/3/2024	0.0295	Baht	01/01/2023 - 31/12/2023	NP	21/5/2024	3.00	1.0%	0.5
WINNER	12/3/2024	0.08	Baht	-	RE	10/5/2024	2.26	3.5%	0.25
BGRIM	13/3/2024	0.18	Baht	01/01/2023 - 31/12/2023	NP	10/5/2024	26.25	0.7%	2
BH	13/3/2024	3.15	Baht	01/07/2023 - 31/12/2023	NP	10/5/2024	229.00	1.4%	1
BH-P	13/3/2024	3.15	Baht	01/07/2023 - 31/12/2023	NP	10/5/2024	22.80	13.8%	1
BJCHI	13/3/2024	0.08	Baht	-	RE	20/5/2024	1.19	6.7%	0.25
BROOK	13/3/2024	0.015	Baht	01/07/2023 - 31/12/2023	Both	28/5/2024	0.61	2.5%	0.125
BTG	13/3/2024	0.25	Baht	01/01/2023 - 31/12/2023	NP	21/5/2024	21.60	1.2%	5
CK	13/3/2024	0.15	Baht	-	RE	2/5/2024	23.50	0.6%	1
DCON	13/3/2024	0.02	Baht	01/01/2023 - 31/12/2023	NP	20/5/2024	0.51	3.9%	0.1
DITTO	13/3/2024	0.25	Baht	01/01/2023 - 31/12/2023	NP	15/5/2024	22.80	1.1%	0.5
EGCO	13/3/2024	3.25	Baht	-	RE	25/4/2024	117.00	2.8%	10
FORTH	13/3/2024	0.22	Baht	01/01/2023 - 31/12/2023	NP	10/5/2024	15.80	1.4%	0.5
HANA	13/3/2024	0.5	Baht	30/09/2023 - 31/12/2023	Both	17/5/2024	36.00	1.4%	1
HL	13/3/2024	0.15	Baht	01/01/2023 - 31/12/2023	Both	10/5/2024	10.70	1.4%	0.5
HTECH	13/3/2024	0.025	Baht	01/07/2023 - 31/12/2023	NP	20/5/2024	2.20	1.1%	1
KBS	13/3/2024	0.55	Baht	01/01/2023 - 31/12/2023	NP	15/5/2024	5.95	9.2%	1
KIAT	13/3/2024	0.01	Baht	01/07/2023 - 31/12/2023	NP	26/4/2024	0.40	2.5%	0.1
MJLF	13/3/2024	0.135	Baht	01/10/2023 - 31/12/2023	Both	28/3/2024	3.80	3.6%	9.8
NETEASE80	13/3/2024	-	Baht	-	-	23/4/2024	-	-	-
NTSC	13/3/2024	0.28	Baht	01/01/2023 - 31/12/2023	NP	23/5/2024	14.90	1.9%	0.5
PMTA	13/3/2024	0.4	Baht	01/01/2023 - 31/12/2023	NP	10/5/2024	8.85	4.5%	10
PRI	13/3/2024	1.0313	Baht	01/07/2023 - 31/12/2023	Both	23/5/2024	19.10	5.4%	0.5
PTC	13/3/2024	0.075	Baht	01/01/2023 - 31/12/2023	NP	17/5/2024	1.99	3.8%	0.5
RCL	13/3/2024	0.5	Baht	01/01/2023 - 31/12/2023	NP	17/5/2024	21.40	2.3%	1
SA	13/3/2024	0.05	Baht	01/01/2023 - 31/12/2023	NP	24/5/2024	7.00	0.7%	1
SAMTEL	13/3/2024	0.02	Baht	01/01/2023 - 31/12/2023	NP	16/5/2024	2.54	0.8%	1
SCL	13/3/2024	0.04	Baht	01/01/2023 - 31/12/2023	NP	23/5/2024	1.70	2.4%	0.5
SCP	13/3/2024	0.35	Baht	01/01/2023 - 31/12/2023	NP	24/5/2024	6.00	5.8%	1
SVOA	13/3/2024	0.0425	Baht	01/01/2023 - 31/12/2023	NP	25/4/2024	1.77	2.4%	1
TK	13/3/2024	0.25	Baht	01/01/2023 - 31/12/2023	Both	15/5/2024	5.15	4.9%	1
TMD	13/3/2024	1.6	Baht	01/01/2023 - 31/12/2023	NP	9/5/2024	24.60	6.5%	1
TPIPL	13/3/2024	0.07	Baht	-	RE	16/5/2024	1.43	4.9%	1
TPIPP	13/3/2024	0.12	Baht	-	RE	9/5/2024	3.38	3.6%	1
TSE	13/3/2024	0.05	Baht	01/01/2023 - 31/12/2023	NP	28/5/2024	1.34	3.7%	1
TVO	13/3/2024	0.65	Baht	01/07/2023 - 31/12/2023	NP	17/5/2024	20.90	3.1%	1
WARRIX	13/3/2024	0.1025	Baht	01/01/2023 - 31/12/2023	NP	10/5/2024	5.00	2.1%	0.5

Source: SET

Exhibit 38: Upcoming XD [4/10]

Symbol	X-Date	Dividend (per Share)	Unit	Operation Period	Source of Dividend	Payment Date	Price	Div Yield	Par
ADVICE	14/3/2024	0.07	Baht	01/01/2023 - 31/12/2023	Both	8/5/2024	4.20	1.7%	0.5
AH	14/3/2024	0.95	Baht	01/07/2023 - 31/12/2023	NP	24/5/2024	23.10	4.1%	1
AMANAHA	14/3/2024	0.015873016	Baht	01/01/2023 - 31/12/2023	NP	16/5/2024	2.20	0.7%	1
AMANAHA	14/3/2024	7 : 1 Share	-	01/01/2023 - 31/12/2023	NP	16/5/2024	2.20	-	1
BIG	14/3/2024	0.015	Baht	01/01/2023 - 31/12/2023	NP	10/5/2024	0.45	3.3%	0.1
CPI	14/3/2024	0.11	Baht	01/01/2023 - 31/12/2023	NP	17/5/2024	2.60	4.2%	1
CPN	14/3/2024	1.8	Baht	01/01/2023 - 31/12/2023	NP	15/5/2024	65.25	2.8%	0.5
CSC	14/3/2024	1.83	Baht	01/01/2023 - 31/12/2023	NP	15/5/2024	45.00	4.1%	10
CSC-P	14/3/2024	3.33	Baht	01/01/2023 - 31/12/2023	NP	15/5/2024	150.00	2.2%	10
IRCP	14/3/2024	0.025	Baht	01/01/2023 - 31/12/2023	NP	27/5/2024	0.67	3.7%	0.5
JCT	14/3/2024	4.25	Baht	-	RE	15/5/2024	81.50	5.2%	10
KOOL	14/3/2024	0.0125	Baht	01/01/2023 - 31/12/2023	NP	8/5/2024	0.38	3.3%	0.25
LALIN	14/3/2024	0.25	Baht	01/07/2023 - 31/12/2023	NP	17/5/2024	7.80	3.2%	1
LOXLEY	14/3/2024	0.07	Baht	01/01/2023 - 31/12/2023	NP	17/5/2024	1.46	4.8%	1
M-CHAI	14/3/2024	0.7	Baht	01/01/2023 - 31/12/2023	NP	29/5/2024	71.00	1.0%	1
MCS	14/3/2024	0.32	Baht	01/01/2023 - 31/12/2023	NP	2/5/2024	6.60	4.8%	1
PEACE	14/3/2024	0.15	Baht	01/01/2023 - 31/12/2023	NP	17/5/2024	3.20	4.7%	1
PQS	14/3/2024	0.081	Baht	01/01/2023 - 31/12/2023	NP	17/5/2024	2.76	2.9%	1
SANKO	14/3/2024	0.04	Baht	01/01/2023 - 31/12/2023	NP	20/5/2024	1.68	2.4%	0.5
SEAOIL	14/3/2024	0.2	Baht	-	RE	21/5/2024	3.00	6.7%	1
SECURE	14/3/2024	0.45	Baht	01/01/2023 - 31/12/2023	NP	20/5/2024	14.30	3.1%	0.5
SFLEX	14/3/2024	0.045	Baht	01/01/2023 - 31/12/2023	NP	9/5/2024	3.40	1.3%	0.5
SGP	14/3/2024	0.15	Baht	01/07/2023 - 31/12/2023	NP	20/5/2024	8.15	1.8%	0.5
SMD	14/3/2024	0.15	Baht	01/01/2023 - 31/12/2023	Both	8/5/2024	6.85	2.2%	0.5
SSTRT	14/3/2024	0.2	Baht	01/07/2023 - 31/12/2023	NP	28/3/2024	5.30	3.8%	7.4295
TPP	14/3/2024	0.22	Baht	01/01/2023 - 31/12/2023	NP	3/5/2024	15.80	1.4%	10
UNIQ	14/3/2024	0.05	Baht	01/01/2023 - 31/12/2023	NP	10/5/2024	3.26	1.5%	1
CEYE	15/3/2024	0.15	Baht	01/01/2023 - 31/12/2023	Both	26/4/2024	4.40	3.4%	0.5
LANNA	15/3/2024	1.2	Baht	01/01/2023 - 31/12/2023	NP	21/5/2024	14.90	8.1%	1
PDG	15/3/2024	0.08	Baht	01/07/2023 - 31/12/2023	Both	21/5/2024	2.48	3.2%	0.5
RATCH	15/3/2024	0.8	Baht	01/01/2023 - 31/12/2023	NP	23/5/2024	28.75	2.8%	10
SIRI	15/3/2024	0.1	Baht	01/01/2023 - 31/12/2023	NP	20/5/2024	1.80	5.6%	1.07
SUSCO	15/3/2024	0.2	Baht	01/07/2023 - 31/12/2023	NP	20/5/2024	4.82	4.1%	1
TQR	15/3/2024	0.226	Baht	01/01/2023 - 31/12/2023	NP	17/5/2024	7.25	3.1%	0.5
TVH	15/3/2024	0.39	Baht	01/01/2023 - 31/12/2023	NP	20/5/2024	8.40	4.6%	1
VNG	15/3/2024	0.02	Baht	01/01/2023 - 31/12/2023	NP	17/5/2024	3.62	0.6%	1
CMR	18/3/2024	0.055	Baht	01/01/2023 - 31/12/2023	Both	24/5/2024	2.00	2.8%	0.1
THG	18/3/2024	0.45	Baht	01/01/2023 - 31/12/2023	NP	24/5/2024	43.75	1.0%	1
TNR	18/3/2024	0.25	Baht	01/10/2023 - 31/12/2023	NP	10/5/2024	9.25	2.7%	1
CCET	19/3/2024	0.075	Baht	01/07/2023 - 31/12/2023	NP	20/5/2024	2.56	2.9%	1
MASTER	19/3/2024	1 : 0.14286 Share	-	01/01/2023 - 31/12/2023	Both	9/5/2024	71.75	-	1
MASTER	19/3/2024	0.014285714	Baht	01/01/2023 - 31/12/2023	Both	9/5/2024	71.75	0.0%	1
NTV	19/3/2024	1.46	Baht	01/01/2023 - 31/12/2023	Both	24/5/2024	37.75	3.9%	1
PATO	19/3/2024	0.5	Baht	01/01/2023 - 31/12/2023	NP	10/5/2024	9.75	5.1%	1
PYLON	19/3/2024	0.14	Baht	-	RE	24/5/2024	2.54	5.5%	0.5
SQ	19/3/2024	0.0455	Baht	01/01/2023 - 31/12/2023	NP	16/5/2024	1.12	4.1%	1
SYNEX	19/3/2024	0.26	Baht	01/07/2023 - 31/12/2023	NP	8/5/2024	9.95	2.6%	1
TEGH	19/3/2024	0.1	Baht	01/01/2023 - 31/12/2023	Both	24/5/2024	3.04	3.3%	1
TKS	19/3/2024	0.17	Baht	01/07/2023 - 31/12/2023	NP	13/5/2024	6.50	2.6%	1
TMILL	19/3/2024	0.07	Baht	01/01/2023 - 31/12/2023	Both	23/5/2024	3.82	1.8%	1
UBE	19/3/2024	0.0156	Baht	01/01/2023 - 31/12/2023	NP	15/5/2024	0.78	2.0%	1
KCAR	20/3/2024	0.11	Baht	01/07/2023 - 31/12/2023	NP	24/5/2024	6.50	1.7%	1
TSTE	20/3/2024	0.06	Baht	01/01/2023 - 31/12/2023	NP	24/5/2024	9.25	0.6%	0.5
AMC	21/3/2024	0.19	Baht	-	RE	23/5/2024	3.22	5.9%	1

Source: SET

Exhibit 39: Upcoming XD [5/10]

Symbol	X-Date	Dividend (per Share)	Unit	Operation Period	Source of Dividend	Payment Date	Price	Div Yield	Par
CMAN	21/3/2024	0.07	Baht	01/01/2023 - 31/12/2023	NP	24/5/2024	1.95	3.6%	1
TAN	21/3/2024	0.2	Baht	01/01/2023 - 31/12/2023	NP	9/5/2024	14.90	1.3%	1
KJL	22/3/2024	0.3	Baht	01/01/2023 - 31/12/2023	NP	10/5/2024	7.45	4.0%	0.5
LST	22/3/2024	0.25	Baht	01/01/2023 - 31/12/2023	NP	24/5/2024	5.10	4.9%	1
HARN	25/3/2024	0.15	Baht	01/01/2023 - 31/12/2023	NP	17/5/2024	2.30	6.5%	0.5
VIH	26/3/2024	0.2	Baht	01/01/2023 - 31/12/2023	NP	24/5/2024	7.95	2.5%	1
Q-CON	29/3/2024	1	Baht	01/01/2023 - 31/12/2023	NP	19/4/2024	16.00	6.3%	1
DCC	1/4/2024	0.012	Baht	01/10/2023 - 31/12/2023	NP	25/4/2024	1.84	0.7%	0.1
SCGD	1/4/2024	0.15	Baht	01/01/2023 - 31/12/2023	NP	22/4/2024	7.40	2.0%	10
SCGP	2/4/2024	0.3	Baht	01/01/2023 - 31/12/2023	NP	22/4/2024	27.25	1.1%	1
SCC	4/4/2024	3.5	Baht	01/01/2023 - 31/12/2023	NP	23/4/2024	271.00	1.3%	1
SMPC	4/4/2024	0.21	Baht	01/07/2023 - 31/12/2023	NP	26/4/2024	8.20	2.6%	1
BANPU	5/4/2024	0.2	Baht	01/07/2023 - 31/12/2023	NP	30/4/2024	5.40	3.7%	1
BPP	5/4/2024	0.4	Baht	01/07/2023 - 31/12/2023	NP	26/4/2024	13.90	2.9%	10
CPAXT	5/4/2024	0.39	Baht	01/01/2023 - 31/12/2023	NP	29/4/2024	32.50	1.2%	0.5
GPI	5/4/2024	0.055	Baht	-	RE	26/4/2024	1.87	2.9%	0.5
MAJOR	9/4/2024	0.15	Baht	01/07/2023 - 31/12/2023	NP	30/4/2024	14.00	1.1%	1
TMT	9/4/2024	0.15	Baht	01/07/2023 - 31/12/2023	NP	30/4/2024	5.75	2.6%	1
BLC	10/4/2024	0.07	Baht	01/01/2023 - 31/12/2023	NP	30/4/2024	4.60	1.5%	0.5
KCC	10/4/2024	0.0543	Baht	01/01/2023 - 31/12/2023	NP	30/4/2024	3.60	1.5%	0.5
KLINIQ	10/4/2024	0.75	Baht	01/01/2023 - 31/12/2023	NP	2/5/2024	40.00	1.9%	0.5
ATP30	11/4/2024	0.02	Baht	01/01/2023 - 31/12/2023	NP	30/4/2024	0.99	2.0%	0.25
JMT	11/4/2024	0.49	Baht	01/07/2023 - 31/12/2023	NP	3/5/2024	21.40	2.3%	0.5
SUTHA	11/4/2024	0.08	Baht	-	RE	3/5/2024	2.46	3.3%	1
AUCT	12/4/2024	0.37	Baht	01/07/2023 - 31/12/2023	NP	3/5/2024	10.10	3.7%	0.25
COCOCO	12/4/2024	0.25	Baht	-	RE	2/5/2024	11.00	2.3%	0.5
GC	12/4/2024	0.16	Baht	01/07/2023 - 31/12/2023	NP	30/4/2024	5.30	3.0%	0.5
QTC	12/4/2024	0.2	Baht	-	RE	30/4/2024	3.98	5.0%	1
TIPCO	12/4/2024	0.63	Baht	01/01/2023 - 31/12/2023	Both	3/5/2024	9.75	6.5%	1
TOG	12/4/2024	0.45	Baht	01/07/2023 - 31/12/2023	NP	2/5/2024	11.60	3.9%	1
TPLAS	12/4/2024	0.04	Baht	01/01/2023 - 31/12/2023	NP	3/5/2024	1.61	2.5%	0.5
KTB	17/4/2024	0.868	Baht	-	RE	3/5/2024	16.30	5.3%	5.15
KTB-P	17/4/2024	1.0225	Baht	-	RE	3/5/2024	153.00	0.7%	5.15
KTC	17/4/2024	1.27	Baht	01/01/2023 - 31/12/2023	NP	3/5/2024	44.00	2.9%	1
SCB	17/4/2024	7.84	Baht	01/01/2023 - 31/12/2023	NP	3/5/2024	112.50	7.0%	10
TTB	17/4/2024	0.055	Baht	01/01/2023 - 31/12/2023	NP	8/5/2024	1.87	2.9%	0.95
IT	18/4/2024	0.1	Baht	01/01/2023 - 31/12/2023	NP	3/5/2024	3.20	3.1%	1
PHG	18/4/2024	0.52	Baht	01/01/2023 - 31/12/2023	Both	9/5/2024	14.10	3.7%	1
STA	18/4/2024	1	Baht	-	RE	8/5/2024	19.10	5.2%	1
STGT	18/4/2024	0.5	Baht	-	RE	8/5/2024	8.35	6.0%	0.5
STP	18/4/2024	0.25	Baht	01/01/2023 - 31/12/2023	NP	9/5/2024	9.95	2.5%	1
TCAP	18/4/2024	2	Baht	-	RE	3/5/2024	49.50	4.0%	10
TCAP-P	18/4/2024	2	Baht	-	RE	3/5/2024	560.00	0.4%	10
UKEM	18/4/2024	0.01	Baht	01/01/2023 - 31/12/2023	NP	7/5/2024	0.80	1.3%	0.25
YUASA	18/4/2024	0.412	Baht	01/01/2023 - 31/12/2023	NP	9/5/2024	11.00	3.7%	1
JPARK	19/4/2024	0.0375	Baht	01/01/2023 - 31/12/2023	Both	7/5/2024	6.80	0.6%	0.5
KWC	19/4/2024	10.5	Baht	01/01/2023 - 31/12/2023	NP	8/5/2024	278.00	3.8%	10
PSL	19/4/2024	0.05	Baht	-	RE	3/5/2024	8.60	0.6%	1
AIT	22/4/2024	0.17	Baht	01/01/2023 - 31/12/2023	NP	9/5/2024	4.50	3.8%	1
HMPRO	22/4/2024	0.22	Baht	01/07/2023 - 31/12/2023	NP	8/5/2024	11.00	2.0%	1
KBANK	22/4/2024	6	Baht	-	RE	10/5/2024	124.00	4.8%	10
KGI	22/4/2024	0.31	Baht	01/01/2023 - 31/12/2023	NP	9/5/2024	4.80	6.5%	1
NER	22/4/2024	0.29	Baht	01/01/2023 - 31/12/2023	NP	9/5/2024	5.75	5.0%	0.5
PACO	22/4/2024	0.04	Baht	01/01/2023 - 31/12/2023	NP	7/5/2024	1.81	2.2%	0.5

Source: SET

Exhibit 40: Upcoming XD [6/10]

Symbol	X-Date	Dividend (per Share)	Unit	Operation Period	Source of Dividend	Payment Date	Price	Div Yield	Par
SMART	22/4/2024	0.0912	Baht	01/01/2023 - 31/12/2023	NP	10/5/2024	1.17	7.8%	0.5
SVI	22/4/2024	0.135	Baht	01/01/2023 - 31/12/2023	NP	9/5/2024	6.30	2.1%	1
THANA	22/4/2024	0.028	Baht	01/01/2023 - 31/12/2023	NP	9/5/2024	1.73	1.6%	1
TTCL	22/4/2024	0.1	Baht	01/07/2023 - 31/12/2023	NP	10/5/2024	3.58	2.8%	1
WINDOW	22/4/2024	0.023	Baht	01/01/2023 - 31/12/2023	NP	9/5/2024	1.20	1.9%	0.5
BBL	23/4/2024	5	Baht	-	RE	10/5/2024	143.50	3.5%	10
DTCI	24/4/2024	0.25	Baht	-	RE	16/5/2024	31.50	0.8%	10
SAPPE	24/4/2024	2.18	Baht	01/01/2023 - 31/12/2023	NP	17/5/2024	90.00	2.4%	1
TIDLOR	24/4/2024	27 : 1 Share	-	01/01/2023 - 31/12/2023	NP	14/5/2024	21.90	-	3.7
TIDLOR	24/4/2024	0.2698	Baht	01/01/2023 - 31/12/2023	NP	14/5/2024	21.90	1.2%	3.7
TISCO	24/4/2024	5.75	Baht	01/01/2023 - 31/12/2023	Both	15/5/2024	100.00	5.8%	10
TISCO-P	24/4/2024	5.75	Baht	01/01/2023 - 31/12/2023	Both	15/5/2024	1,346.00	0.4%	10
BUI	25/4/2024	0.3	Baht	01/01/2023 - 31/12/2023	NP	17/5/2024	21.60	1.4%	10
BUI	25/4/2024	4 : 1 Share	-	01/01/2023 - 31/12/2023	NP	17/5/2024	21.60	-	10
QH	25/4/2024	0.1	Baht	01/07/2023 - 31/12/2023	NP	16/5/2024	2.18	4.6%	1
TM	25/4/2024	0.033	Baht	01/01/2023 - 31/12/2023	NP	15/5/2024	1.90	1.7%	0.5
WHAUP	25/4/2024	0.1925	Baht	01/01/2023 - 31/12/2023	NP	15/5/2024	3.96	4.9%	1
AMARC	26/4/2024	0.039	Baht	01/01/2023 - 31/12/2023	Both	17/5/2024	1.38	2.8%	0.5
ANI	26/4/2024	0.05	Baht	01/01/2023 - 31/12/2023	NP	20/5/2024	5.25	1.0%	0.5
BGC	26/4/2024	0.08	Baht	01/10/2023 - 31/12/2023	NP	17/5/2024	7.35	1.1%	5
KKP	26/4/2024	1.75	Baht	01/01/2023 - 31/12/2023	NP	16/5/2024	52.50	3.3%	10
MFC	26/4/2024	1.3	Baht	01/01/2023 - 31/12/2023	NP	16/5/2024	21.40	6.1%	1
NSL	26/4/2024	0.35	Baht	01/01/2023 - 31/12/2023	NP	17/5/2024	21.20	1.7%	1
NYT	26/4/2024	0.36	Baht	01/01/2023 - 31/12/2023	NP	17/5/2024	4.66	7.7%	0.5
SPA	26/4/2024	2 : 1 Share	-	01/01/2023 - 31/12/2023	Both	17/5/2024	13.90	-	0.25
SPA	26/4/2024	0.01389	Baht	01/01/2023 - 31/12/2023	Both	17/5/2024	13.90	0.1%	0.25
TKC	26/4/2024	0.15	Baht	01/01/2023 - 31/12/2023	NP	15/5/2024	13.80	1.1%	1
TPS	26/4/2024	0.18	Baht	-	RE	15/5/2024	3.28	5.5%	0.5
APCO	29/4/2024	0.18	Baht	01/01/2023 - 31/12/2023	Both	13/5/2024	4.92	3.7%	0.5
BAM	29/4/2024	0.38	Baht	01/01/2023 - 31/12/2023	NP	21/5/2024	8.05	4.7%	5
LHFG	29/4/2024	0.03	Baht	01/01/2023 - 31/12/2023	NP	17/5/2024	1.02	2.9%	1
MTC	29/4/2024	0.21	Baht	01/01/2023 - 31/12/2023	NP	16/5/2024	46.00	0.5%	1
NAT	29/4/2024	0.025	Baht	01/10/2023 - 31/12/2023	NP	17/5/2024	6.50	0.4%	0.5
PJW	29/4/2024	0.06	Baht	-	RE	17/5/2024	2.98	2.0%	0.5
RPH	29/4/2024	0.19	Baht	01/01/2023 - 31/12/2023	Both	15/5/2024	6.40	3.0%	1
RSP	29/4/2024	0.13	Baht	01/01/2023 - 31/12/2023	NP	15/5/2024	2.32	5.6%	1
SAK	29/4/2024	0.15	Baht	01/01/2023 - 31/12/2023	NP	17/5/2024	4.30	3.5%	1
SKR	29/4/2024	0.09	Baht	01/07/2023 - 31/12/2023	NP	14/5/2024	10.20	0.9%	0.5
SORKON	29/4/2024	0.2	Baht	01/01/2023 - 31/12/2023	NP	21/5/2024	4.26	4.7%	1
SUN	29/4/2024	0.25	Baht	01/01/2023 - 31/12/2023	NP	20/5/2024	5.75	4.3%	0.5
SUN	29/4/2024	5 : 1 Share	-	01/01/2023 - 31/12/2023	NP	20/5/2024	5.75	-	0.5
APP	30/4/2024	0.15	Baht	01/01/2023 - 31/12/2023	NP	17/5/2024	2.50	6.0%	0.5
ASW	30/4/2024	0.25	Baht	01/01/2023 - 31/12/2023	NP	21/5/2024	8.10	3.1%	1
BBIK	30/4/2024	1 : 0.837 Share	-	01/01/2023 - 31/12/2023	NP	21/5/2024	100.00	-	0.5
BBIK	30/4/2024	0.3815	Baht	01/01/2023 - 31/12/2023	NP	21/5/2024	100.00	0.4%	0.5
BJC	30/4/2024	0.65	Baht	01/07/2023 - 31/12/2023	NP	23/5/2024	24.00	2.7%	1
BRI	30/4/2024	0.603	Baht	01/07/2023 - 31/12/2023	NP	16/5/2024	7.00	8.6%	0.5
CM	30/4/2024	0.09	Baht	01/01/2023 - 31/12/2023	NP	17/5/2024	2.18	4.1%	1
GYT	30/4/2024	7	Baht	01/01/2023 - 31/12/2023	NP	21/5/2024	182.00	3.8%	10
III	30/4/2024	0.18	Baht	01/07/2023 - 31/12/2023	NP	16/5/2024	9.20	2.0%	0.5
KISS	30/4/2024	0.09	Baht	01/07/2023 - 31/12/2023	NP	21/5/2024	4.84	1.9%	0.5
MEB	30/4/2024	0.65	Baht	01/01/2023 - 31/12/2023	NP	21/5/2024	35.50	1.8%	0.5
MENA	30/4/2024	0.03	Baht	01/01/2023 - 31/12/2023	NP	17/5/2024	1.91	1.6%	0.5
MFEC	30/4/2024	0.4	Baht	01/01/2023 - 31/12/2023	NP	17/5/2024	6.75	5.9%	1

Source: SET

Exhibit 41: Upcoming XD [7/10]

Symbol	X-Date	Dividend (per Share)	Unit	Operation Period	Source of Dividend	Payment Date	Price	Div Yield	Par
PDJ	30/4/2024	0.1	Baht	-	RE	21/5/2024	1.89	5.3%	1
PREB	30/4/2024	0.4	Baht	01/01/2023 - 31/12/2023	NP	24/5/2024	6.15	6.5%	1
RPC	30/4/2024	0.04	Baht	01/01/2023 - 31/12/2023	Both	21/5/2024	0.63	6.3%	1
SAMCO	30/4/2024	0.03	Baht	01/01/2023 - 31/12/2023	NP	21/5/2024	1.18	2.5%	1
SCG	30/4/2024	0.05	Baht	-	RE	17/5/2024	3.50	1.4%	1
STEG19	30/4/2024	-	Baht	-	-	28/5/2024	-	-	-
TFG	30/4/2024	0.01	Baht	01/01/2023 - 31/12/2023	Both	21/5/2024	3.44	0.3%	1
TPCH	30/4/2024	0.4	Baht	01/01/2023 - 31/12/2023	NP	20/5/2024	6.65	6.0%	1
TPCS	30/4/2024	0.65	Baht	01/01/2023 - 31/12/2023	NP	20/5/2024	16.70	3.9%	1
AAI	2/5/2024	0.18	Baht	01/01/2023 - 31/12/2023	Both	17/5/2024	3.94	4.6%	1
ACG	2/5/2024	0.0133	Baht	01/01/2023 - 31/12/2023	NP	21/5/2024	1.27	1.0%	0.5
AHC	2/5/2024	0.63	Baht	01/01/2023 - 31/12/2023	NP	20/5/2024	18.00	3.5%	1
ALUCON	2/5/2024	8	Baht	01/01/2023 - 31/12/2023	NP	15/5/2024	183.50	4.4%	10
AURA	2/5/2024	0.31	Baht	01/01/2023 - 31/12/2023	NP	21/5/2024	13.70	2.3%	1
BCH	2/5/2024	0.25	Baht	01/01/2023 - 31/12/2023	NP	23/5/2024	21.60	1.2%	1
BIS	2/5/2024	0.07	Baht	01/07/2023 - 31/12/2023	NP	21/5/2024	3.30	2.1%	0.5
BRR	2/5/2024	0.2	Baht	01/01/2023 - 31/12/2023	NP	21/5/2024	4.28	4.7%	1
DTCENT	2/5/2024	20 : 1 Share	-	01/01/2023 - 31/12/2023	NP	20/5/2024	1.57	-	0.5
DTCENT	2/5/2024	0.048507281	Baht	01/01/2023 - 31/12/2023	NP	20/5/2024	1.57	3.1%	0.5
FPI	2/5/2024	0.04	Baht	01/07/2023 - 31/12/2023	NP	15/5/2024	2.44	1.6%	0.25
FTE	2/5/2024	0.1	Baht	01/07/2023 - 31/12/2023	NP	23/5/2024	1.69	5.9%	0.5
HTC	2/5/2024	0.56	Baht	01/07/2023 - 31/12/2023	NP	20/5/2024	16.50	3.4%	0.5
HUMAN	2/5/2024	0.14	Baht	01/07/2023 - 31/12/2023	NP	23/5/2024	11.80	1.2%	0.5
KCG	2/5/2024	0.3	Baht	01/01/2023 - 31/12/2023	NP	21/5/2024	8.90	3.4%	1
LPH	2/5/2024	0.09	Baht	01/01/2023 - 31/12/2023	Both	17/5/2024	4.78	1.9%	0.5
MCA	2/5/2024	0.045	Baht	01/01/2023 - 31/12/2023	NP	20/5/2024	2.98	1.5%	0.5
MINT	2/5/2024	0.32	Baht	01/01/2023 - 31/12/2023	Both	21/5/2024	32.00	1.0%	1
MODERN	2/5/2024	0.09	Baht	01/01/2023 - 31/12/2023	NP	17/5/2024	2.18	4.1%	1
MOONG	2/5/2024	0.12	Baht	01/01/2023 - 31/12/2023	NP	21/5/2024	2.26	5.3%	0.5
MOSHI	2/5/2024	0.6	Baht	01/01/2023 - 31/12/2023	NP	24/5/2024	57.00	1.1%	1
NETBAY	2/5/2024	0.8983	Baht	01/01/2023 - 31/12/2023	NP	21/5/2024	21.00	4.3%	1
OSP	2/5/2024	0.45	Baht	01/07/2023 - 31/12/2023	Both	23/5/2024	19.00	2.4%	1
PAF	2/5/2024	0.0102	Baht	01/01/2023 - 31/12/2023	NP	23/5/2024	1.39	0.7%	0.51
PR9	2/5/2024	0.3	Baht	01/01/2023 - 31/12/2023	NP	20/5/2024	18.90	1.6%	1
SC	2/5/2024	0.16	Baht	01/07/2023 - 31/12/2023	NP	21/5/2024	3.32	4.8%	1
SICT	2/5/2024	0.035	Baht	01/01/2023 - 31/12/2023	NP	23/5/2024	4.92	0.7%	0.5
SINO	2/5/2024	0.014423	Baht	01/10/2023 - 31/12/2023	NP	20/5/2024	1.39	1.0%	0.5
SPC	2/5/2024	1.4	Baht	-	RE	21/5/2024	62.00	2.3%	1
SPI	2/5/2024	0.6	Baht	-	RE	21/5/2024	68.00	0.9%	1
SRICHA	2/5/2024	0.25	Baht	-	RE	17/5/2024	8.95	2.8%	1
SRS	2/5/2024	0.02	Baht	01/10/2023 - 31/12/2023	NP	23/5/2024	10.00	0.2%	0.5
SST	2/5/2024	0.01	Baht	-	RE	23/5/2024	5.30	0.2%	1
TNL	2/5/2024	0.3	Baht	-	RE	20/5/2024	34.50	0.9%	1
TWPC	2/5/2024	0.091	Baht	-	RE	23/5/2024	3.62	2.5%	1
WIJK	2/5/2024	0.06	Baht	01/01/2023 - 31/12/2023	Both	20/5/2024	1.50	4.0%	1
CHG	3/5/2024	0.05	Baht	01/01/2023 - 31/12/2023	NP	24/5/2024	2.96	1.7%	0.1
CPR	3/5/2024	0.116	Baht	01/01/2023 - 31/12/2023	NP	24/5/2024	4.00	2.9%	1
CRC	3/5/2024	0.55	Baht	01/01/2023 - 31/12/2023	NP	24/5/2024	35.50	1.5%	1
D	3/5/2024	0.06	Baht	01/01/2023 - 31/12/2023	NP	21/5/2024	3.74	1.6%	0.5
DMT	3/5/2024	0.15	Baht	01/01/2023 - 31/12/2023	NP	24/5/2024	12.00	1.3%	5.2
ICC	3/5/2024	3.90814 : 1 Share	-	-	RE	21/5/2024	44.00	-	1
ICC	3/5/2024	1.144123746	Baht	-	RE	21/5/2024	44.00	2.6%	1
IND	3/5/2024	0.015	Baht	01/01/2023 - 31/12/2023	NP	21/5/2024	0.93	1.6%	0.5
INET	3/5/2024	0.116	Baht	01/01/2023 - 31/12/2023	NP	23/5/2024	4.60	2.5%	1

Source: SET

Exhibit 42: Upcoming XD [8/10]

Symbol	X-Date	Dividend (per Share)	Unit	Operation Period	Source of Dividend	Payment Date	Price	Div Yield	Par
IVL	3/5/2024	0.175	Baht	01/01/2023 - 31/12/2023	NP	23/5/2024	23.40	0.7%	1
KWM	3/5/2024	0.058	Baht	01/01/2023 - 31/12/2023	Both	23/5/2024	1.51	3.8%	0.5
L&E	3/5/2024	0.04	Baht	-	RE	20/5/2024	1.26	3.2%	1
LH	3/5/2024	0.3	Baht	01/07/2023 - 31/12/2023	NP	21/5/2024	7.45	4.0%	1
LRH	3/5/2024	1.35	Baht	01/01/2023 - 31/12/2023	Both	23/5/2024	41.25	3.3%	10
NOBLE	3/5/2024	0.118	Baht	01/10/2023 - 31/12/2023	Both	24/5/2024	3.72	3.2%	1
ONEE	3/5/2024	0.13	Baht	01/07/2023 - 31/12/2023	NP	24/5/2024	5.00	2.6%	2
PCC	3/5/2024	0.14	Baht	01/01/2023 - 31/12/2023	NP	28/5/2024	3.02	4.6%	1
PF	3/5/2024	0.013	Baht	01/01/2023 - 31/12/2023	NP	24/5/2024	0.28	4.6%	1
PIMO	3/5/2024	0.03	Baht	01/07/2023 - 31/12/2023	NP	21/5/2024	1.49	2.0%	0.25
PL	3/5/2024	0.11	Baht	01/01/2023 - 31/12/2023	NP	21/5/2024	2.04	5.4%	1
RBF	3/5/2024	0.175	Baht	01/01/2023 - 31/12/2023	NP	20/5/2024	11.30	1.5%	1
ROCK	3/5/2024	0.5	Baht	01/01/2023 - 31/12/2023	NP	24/5/2024	8.60	5.8%	10
ROJNA	3/5/2024	0.4	Baht	01/01/2023 - 31/12/2023	NP	24/5/2024	6.05	6.6%	1
SABINA	3/5/2024	0.67	Baht	-	RE	17/5/2024	25.00	2.7%	1
SEAFCO	3/5/2024	10 : 1 Share	-	01/01/2023 - 31/12/2023	NP	27/5/2024	2.66	-	0.5
SEAFCO	3/5/2024	0.09	Baht	01/01/2023 - 31/12/2023	NP	27/5/2024	2.66	3.4%	0.5
SO	3/5/2024	0.2	Baht	01/07/2023 - 31/12/2023	Both	21/5/2024	6.70	3.0%	1
SSF	3/5/2024	0.3704	Baht	01/01/2023 - 31/12/2023	NP	23/5/2024	7.75	4.8%	1
TC	3/5/2024	0.1	Baht	01/01/2023 - 31/12/2023	NP	24/5/2024	5.25	1.9%	1
TGE	3/5/2024	0.0026	Baht	01/01/2023 - 31/12/2023	NP	24/5/2024	3.64	0.1%	0.5
THREL	3/5/2024	0.07	Baht	01/01/2023 - 31/12/2023	NP	-	1.88	3.7%	1
THREL	3/5/2024	61 : 1 Share	-	01/01/2023 - 31/12/2023	NP	-	1.88	-	1
TPBI	3/5/2024	0.25	Baht	01/01/2023 - 31/12/2023	NP	24/5/2024	3.94	6.3%	1
TRP	3/5/2024	0.3	Baht	01/01/2023 - 31/12/2023	NP	23/5/2024	14.00	2.1%	0.5
TRT	3/5/2024	0.21	Baht	01/01/2023 - 31/12/2023	NP	21/5/2024	2.82	7.4%	1
UBA	3/5/2024	0.048	Baht	01/01/2023 - 31/12/2023	NP	21/5/2024	1.05	4.6%	0.5
AMATAV	7/5/2024	0.01235	Baht	01/01/2023 - 31/12/2023	NP	23/5/2024	5.50	0.2%	0.5
AMATAV	7/5/2024	1 : 0.14 Share	-	01/01/2023 - 31/12/2023	NP	23/5/2024	5.50	-	0.5
ASEFA	7/5/2024	0.19	Baht	01/01/2023 - 31/12/2023	NP	24/5/2024	3.92	4.8%	1
ASIAN	7/5/2024	0.29	Baht	01/07/2023 - 31/12/2023	NP	24/5/2024	6.45	4.5%	1
AU	7/5/2024	0.21	Baht	01/01/2023 - 31/12/2023	NP	23/5/2024	8.65	2.4%	0.1
BAY	7/5/2024	0.45	Baht	-	RE	23/5/2024	26.50	1.7%	10
BEC	7/5/2024	0.06	Baht	-	RE	23/5/2024	4.16	1.4%	1
BLA	7/5/2024	0.2	Baht	-	RE	-	17.30	1.2%	1
CH	7/5/2024	0.04	Baht	-	RE	17/5/2024	2.48	1.6%	0.5
CIVIL	7/5/2024	0.012	Baht	01/01/2023 - 31/12/2023	NP	24/5/2024	2.00	0.6%	1
CKP	7/5/2024	0.085	Baht	01/01/2023 - 31/12/2023	Both	23/5/2024	3.76	2.3%	1
COLOR	7/5/2024	0.03	Baht	01/01/2023 - 31/12/2023	Both	24/5/2024	1.36	2.2%	1
CPALL	7/5/2024	1	Baht	01/01/2023 - 31/12/2023	NP	24/5/2024	56.25	1.8%	1
CPANEL	7/5/2024	0.16	Baht	01/01/2023 - 31/12/2023	NP	24/5/2024	6.20	2.6%	1
CSR	7/5/2024	1.57	Baht	01/01/2023 - 31/12/2023	NP	24/5/2024	68.00	2.3%	10
CSS	7/5/2024	0.02	Baht	01/01/2023 - 31/12/2023	NP	24/5/2024	0.88	2.3%	0.5
DEXON	7/5/2024	0.052	Baht	01/01/2023 - 31/12/2023	NP	24/5/2024	2.12	2.5%	0.5
EASON	7/5/2024	0.05	Baht	01/01/2023 - 31/12/2023	NP	24/5/2024	1.23	4.1%	1
EKH	7/5/2024	40 : 1 Share	-	01/01/2023 - 31/12/2023	NP	20/5/2024	7.60	-	0.5
EKH	7/5/2024	0.3	Baht	01/01/2023 - 31/12/2023	NP	20/5/2024	7.60	3.9%	0.5
ILINK	7/5/2024	0.39	Baht	01/01/2023 - 31/12/2023	NP	23/5/2024	7.50	5.2%	1
IP	7/5/2024	0.0348	Baht	-	RE	24/5/2024	8.35	0.4%	0.5
IP	7/5/2024	8 : 5 Share	-	-	RE	24/5/2024	8.35	-	0.5
ITEL	7/5/2024	0.0696	Baht	01/01/2023 - 31/12/2023	NP	23/5/2024	2.34	3.0%	0.5
JDF	7/5/2024	0.04	Baht	01/01/2023 - 31/12/2023	NP	20/5/2024	2.38	1.7%	0.5
KTMS	7/5/2024	0.014	Baht	01/01/2023 - 31/12/2023	NP	24/5/2024	2.68	0.5%	0.5
MATI	7/5/2024	0.25	Baht	-	RE	23/5/2024	7.65	3.3%	1

Source: SET

Exhibit 43: Upcoming XD [9/10]

Symbol	X-Date	Dividend (per Share)	Unit	Operation Period	Source of Dividend	Payment Date	Price	Div Yield	Par
MGT	7/5/2024	0.07	Baht	01/07/2023 - 31/12/2023	NP	20/5/2024	2.58	2.7%	0.5
NL	7/5/2024	0.12082	Baht	01/01/2023 - 31/12/2023	NP	21/5/2024	2.46	4.9%	1
ORN	7/5/2024	0.05	Baht	01/01/2023 - 31/12/2023	NP	24/5/2024	1.32	3.8%	1
PRAPAT	7/5/2024	25 : 1 Share	-	01/01/2023 - 31/12/2023	NP	27/5/2024	1.60	-	0.5
PRAPAT	7/5/2024	0.04	Baht	01/01/2023 - 31/12/2023	NP	27/5/2024	1.60	2.5%	0.5
PRM	7/5/2024	0.26	Baht	01/01/2023 - 31/12/2023	NP	24/5/2024	6.65	3.9%	1
S&J	7/5/2024	2.25	Baht	-	RE	21/5/2024	53.25	4.2%	1
SAFE	7/5/2024	0.15	Baht	01/10/2023 - 31/12/2023	NP	24/5/2024	19.80	0.8%	1
SALEE	7/5/2024	0.035	Baht	01/01/2023 - 31/12/2023	Both	27/5/2024	0.74	4.7%	0.25
SCN	7/5/2024	0.0124	Baht	01/01/2023 - 31/12/2023	NP	23/5/2024	1.35	0.9%	0.5
SELIC	7/5/2024	0.03273	Baht	01/01/2023 - 31/12/2023	NP	24/5/2024	2.48	1.3%	0.5
SITHAI	7/5/2024	0.04	Baht	-	RE	24/5/2024	1.17	3.4%	1
SM	7/5/2024	0.03	Baht	01/01/2023 - 31/12/2023	NP	27/5/2024	1.27	2.4%	0.5
SNNP	7/5/2024	0.25	Baht	01/07/2023 - 31/12/2023	NP	24/5/2024	16.50	1.5%	0.5
SPALI	7/5/2024	0.75	Baht	01/07/2023 - 31/12/2023	NP	21/5/2024	20.50	3.7%	1
SSP	7/5/2024	0.1	Baht	01/01/2023 - 31/12/2023	NP	24/5/2024	7.70	1.3%	1
SWC	7/5/2024	10 : 1 Share	-	01/01/2023 - 31/12/2023	NP	24/5/2024	4.40	-	0.5
SWC	7/5/2024	0.005555556	Baht	01/01/2023 - 31/12/2023	NP	24/5/2024	4.40	0.1%	0.5
TACC	7/5/2024	0.19	Baht	01/01/2023 - 31/12/2023	NP	20/5/2024	4.88	3.9%	0.25
TPA	7/5/2024	0.25	Baht	-	RE	21/5/2024	3.92	6.4%	1
VENTURE19	7/5/2024	-	Baht	-	-	7/6/2024	-	-	-
VIBHA	7/5/2024	0.05	Baht	01/01/2023 - 31/12/2023	NP	27/5/2024	1.88	2.7%	0.1
AMARIN	8/5/2024	0.18	Baht	01/01/2023 - 31/12/2023	NP	24/5/2024	4.26	4.2%	1
AP	8/5/2024	0.7	Baht	01/01/2023 - 31/12/2023	NP	23/5/2024	10.50	6.7%	1
ARROW	8/5/2024	0.25	Baht	01/01/2023 - 31/12/2023	Both	23/5/2024	6.50	3.8%	1
AYUD	8/5/2024	1.67	Baht	01/01/2023 - 31/12/2023	NP	29/5/2024	35.00	4.8%	1
BAFS	8/5/2024	0.14	Baht	-	RE	23/5/2024	23.10	0.6%	1
CENTEL	8/5/2024	0.42	Baht	01/01/2023 - 31/12/2023	NP	27/5/2024	42.00	1.0%	1
EASTW	8/5/2024	0.05	Baht	01/07/2023 - 31/12/2023	NP	29/5/2024	3.86	1.3%	1
FLOYD	8/5/2024	0.00617	Baht	01/01/2023 - 31/12/2023	Both	24/5/2024	1.16	0.5%	0.5
FLOYD	8/5/2024	9 : 1 Share	-	01/01/2023 - 31/12/2023	Both	24/5/2024	1.16	-	0.5
ORI	8/5/2024	0.3	Baht	01/07/2023 - 31/12/2023	NP	23/5/2024	6.85	4.4%	0.5
PCSGH	8/5/2024	0.2	Baht	01/07/2023 - 31/12/2023	Both	24/5/2024	5.05	4.0%	1
PIN	8/5/2024	0.59	Baht	01/01/2023 - 31/12/2023	NP	24/5/2024	6.15	9.6%	1
PPM	8/5/2024	0.058	Baht	01/01/2023 - 31/12/2023	NP	24/5/2024	2.40	2.4%	0.5
SAWAD	8/5/2024	10 : 1 Share	-	01/01/2023 - 31/12/2023	NP	23/5/2024	37.00	-	1
SAWAD	8/5/2024	0.0115	Baht	01/01/2023 - 31/12/2023	NP	23/5/2024	37.00	0.0%	1
SCAP	8/5/2024	0.0023	Baht	01/01/2023 - 31/12/2023	NP	23/5/2024	2.96	0.1%	1
SCAP	8/5/2024	50 : 1 Share	-	01/01/2023 - 31/12/2023	NP	23/5/2024	2.96	-	1
SHANG	8/5/2024	1	Baht	01/01/2023 - 31/12/2023	NP	24/5/2024	48.25	2.1%	10
TLI	8/5/2024	0.5	Baht	01/01/2023 - 31/12/2023	NP	-	8.95	5.6%	1
TOA	8/5/2024	0.35	Baht	01/07/2023 - 31/12/2023	NP	28/5/2024	19.90	1.8%	1
TRU	8/5/2024	0.2	Baht	01/01/2023 - 31/12/2023	Both	24/5/2024	3.32	6.0%	1
A5	9/5/2024	0.05	Baht	01/01/2023 - 31/12/2023	NP	20/5/2024	3.32	1.5%	0.5
AKR	9/5/2024	0.065	Baht	01/01/2023 - 31/12/2023	NP	24/5/2024	0.98	6.6%	0.8
ALLA	9/5/2024	0.12	Baht	01/01/2023 - 31/12/2023	NP	24/5/2024	1.80	6.7%	0.5
AMATA	9/5/2024	0.4	Baht	01/01/2023 - 31/12/2023	NP	24/5/2024	22.50	1.8%	1
AWC	9/5/2024	0.05	Baht	01/01/2023 - 31/12/2023	Both	24/5/2024	3.74	1.3%	1
CCP	9/5/2024	0.01	Baht	-	RE	29/5/2024	0.36	2.8%	0.25
FVC	9/5/2024	0.01	Baht	01/01/2023 - 31/12/2023	NP	30/5/2024	0.82	1.2%	0.5
HPT	9/5/2024	0.016	Baht	01/01/2023 - 31/12/2023	Both	23/5/2024	0.57	2.8%	0.25
KUMWEL	9/5/2024	0.05	Baht	01/01/2023 - 31/12/2023	NP	24/5/2024	1.79	2.8%	0.5
M	9/5/2024	1	Baht	01/01/2023 - 31/12/2023	NP	24/5/2024	36.75	2.7%	1
PG	9/5/2024	0.2	Baht	01/01/2023 - 31/12/2023	NP	21/5/2024	9.05	2.2%	1

Source: SET

Exhibit 44: Upcoming XD [10/10]

Symbol	X-Date	Dividend (per Share)	Unit	Operation Period	Source of Dividend	Payment Date	Price	Div Yield	Par
SENX	9/5/2024	0.00829	Baht	01/01/2023 - 31/12/2023	NP	21/5/2024	0.53	1.6%	0.5
SJWD	9/5/2024	0.25	Baht	01/01/2023 - 31/12/2023	NP	27/5/2024	16.00	1.6%	0.5
SK	9/5/2024	0.05	Baht	01/01/2023 - 31/12/2023	NP	24/5/2024	0.84	6.0%	0.5
SMIT	9/5/2024	0.14	Baht	01/07/2023 - 31/12/2023	NP	24/5/2024	4.48	3.1%	1
SSSC	9/5/2024	0.222	Baht	01/01/2023 - 31/12/2023	NP	24/5/2024	3.06	7.3%	1
TBN	9/5/2024	0.14	Baht	01/07/2023 - 31/12/2023	NP	20/5/2024	12.00	1.2%	0.5
TOPP	9/5/2024	6.68	Baht	01/01/2023 - 31/12/2023	NP	29/5/2024	152.00	4.4%	10
TPAC	9/5/2024	0.45	Baht	01/01/2023 - 31/12/2023	NP	24/5/2024	15.20	3.0%	1
WHA	9/5/2024	0.117	Baht	01/01/2023 - 31/12/2023	NP	24/5/2024	4.56	2.6%	0.1
CHARAN	10/5/2024	1.25	Baht	01/01/2023 - 31/12/2023	NP	23/5/2024	23.80	5.3%	10
GABLE	10/5/2024	0.289	Baht	01/01/2023 - 31/12/2023	Both	28/5/2024	4.36	6.6%	1
ILM	10/5/2024	0.75	Baht	01/01/2023 - 31/12/2023	NP	23/5/2024	22.10	3.4%	5
JUBILE	10/5/2024	0.25	Baht	01/07/2023 - 31/12/2023	NP	17/5/2024	16.50	1.5%	1
KAMART	10/5/2024	0.112	Baht	01/01/2023 - 31/12/2023	Both	24/5/2024	13.30	0.8%	0.6
KAMART	10/5/2024	5 : 1 Share	-	01/01/2023 - 31/12/2023	Both	24/5/2024	13.30	-	0.6
NEW	10/5/2024	2.3	Baht	01/01/2023 - 31/12/2023	NP	24/5/2024	110.00	2.1%	10
SENA	10/5/2024	0.234214	Baht	01/01/2023 - 31/12/2023	NP	24/5/2024	2.66	8.8%	1
SIAM	10/5/2024	0.01	Baht	01/01/2023 - 31/12/2023	NP	27/5/2024	1.19	0.8%	1
UMI	10/5/2024	0.03	Baht	01/01/2023 - 31/12/2023	Both	28/5/2024	1.01	3.0%	1
SMT	14/5/2024	0.07	Baht	-	RE	21/5/2024	2.86	2.4%	1

Source: SET

Exhibit 45: New securities

Derivative Warrants	Trade Date	Underlying	Issuer	DW Type	Market	Maturity Date	Exercise Price (Baht)
CPALL13P2408A	05/03/2024	CPALL	KGI	Put	SET	08/08/2024	40.5
DELTA13C2407B	05/03/2024	DELTA	KGI	Call	SET	11/07/2024	95
DELTA19P2407A	05/03/2024	DELTA	YUANTA	Put	SET	11/07/2024	47
DELTA41C2407B	05/03/2024	DELTA	JPM	Call	SET	10/07/2024	95
EA13C2408A	05/03/2024	EA	KGI	Call	SET	08/08/2024	47
EA19C2407A	05/03/2024	EA	YUANTA	Call	SET	11/07/2024	43.25
SAWAD13C2408A	05/03/2024	SAWAD	KGI	Call	SET	08/08/2024	52
SET5013C2406E	05/03/2024	SET50	KGI	Call	SET	03/07/2024	950
SET5041C2406E	05/03/2024	SET50	JPM	Call	SET	03/07/2024	950
SET5041P2409A	05/03/2024	SET50	JPM	Put	SET	03/10/2024	750
TLI19C2407A	05/03/2024	TLI	YUANTA	Call	SET	11/07/2024	11.1

Source: SET